

Store at
-20°C

Color-coded Prestained Protein Marker, Broad Range (10-250 kDa)



#74124

Small 250 µl
Petite 25 µl

Support: +1-978-867-2388 (U.S.)
www.cellsignal.com/support

Orders: 877-616-2355 (U.S.)
orders@cellsignal.com

New 10/19

For Research Use Only. Not For Use In Diagnostic Procedures.

Description: Color-coded Prestained Protein Marker, Broad Range (10-250 kDa) is a mixture of purified proteins, covalently coupled to blue, green or orange dyes, that resolves to 11 bands between 10 and 250 kDa when subjected to electrophoresis. The protein concentrations are carefully balanced for even intensity. The covalent coupling of dye to protein affects the electrophoretic mobility in SDS-PAGE gels relative to uncoupled proteins. The apparent molecular weights of the prestained proteins are shown in the gel image.

Directions For Use:

Important: Do Not Boil Protein Marker

1. Thaw the protein ladder at room temperature.
2. Gently vortex solution to ensure the mixture is homogeneous.
3. Load the appropriate volume of the protein marker per lane, as specified below:

Mini-Gel: 0.75-1.0 mm thick: load 5 µl
1.5 mm thick: load 10 µl

Large Gel: 0.75-1.0 mm thick: load 10 µl
1.5 mm thick: load 20 µl

4. Unused ladder may be returned to -20°C for long-term storage.

Note on Apparent Molecular Weights:

The relative sizes of these protein markers may depend on the type of gel used and may appear different than expected. The coupling of a charged dye molecule to a protein marker alters the overall charge of the protein and will likely alter its mobility in an SDS polyacrylamide gel. The extent of this effect can vary with the properties of the gel type (e.g., Tris-glycine, Tris-Tricine, etc.) used in the analysis. For this reason, the sizes of these marker proteins are expressed here as apparent molecular weights. For best results, we recommend using these prestained protein markers on a Tris-glycine SDS gel.

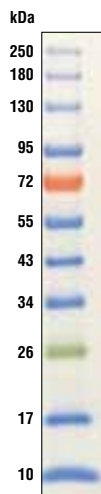


Image is from a 4-20% Tris-glycine gradient SDS-polyacrylamide gel.

Storage: Supplied in 62.5 mM Tris-Phosphate (pH 7.5 at 25°C), 1 mM EDTA, 2% SDS, 10 mM DTT, 1 mM Na₂S₂O₅ and 33% glycerol. Store at -20°C for up to one year.

For product specific protocols and a complete listing of recommended companion products please see the product web page at www.cellsignal.com.

Thank you for your recent purchase. If you would like to provide a review visit www.cellsignal.com/comments.

www.cellsignal.com

© 2019 Cell Signaling Technology, Inc.

Cell Signaling Technology is a trademark of Cell Signaling Technology, Inc.

Applications: W—Western IP—Immunoprecipitation IHC—Immunohistochemistry ChIP—Chromatin Immunoprecipitation IF—Immunofluorescence F—Flow cytometry E-P—ELISA-Peptide **Species Cross-Reactivity:** H—human M—mouse R—rat Hm—hamster Mk—monkey Mi—mink C—chicken Dm—D. melanogaster X—Xenopus Z—zebrafish B—bovine Dg—dog Pg—pig Sc—S. cerevisiae Ce—C. elegans Hr—Horse All—all species expected Species enclosed in parentheses are predicted to react based on 100% homology.