

PathScan® Phospho-GSK-3β (Ser9) Sandwich ELISA Kit



✓ 1 Kit
(96 assays)

Orders ■ 877-616-CELL (2355)
orders@cellsignal.com
Support ■ 877-678-TECH (8324)
info@cellsignal.com
Web ■ www.cellsignal.com

rev. 11/02/17

For Research Use Only. Not For Use In Diagnostic Procedures.

Species Cross-Reactivity: H, M, R, Mk

Description: The PathScan® Phospho-GSK-3β (Ser9) Sandwich ELISA Kit is a solid phase sandwich enzyme-linked immunosorbent assay (ELISA) that detects endogenous levels of GSK-3β protein phosphorylated at Ser9. A GSK-3β mouse mAb has been coated onto the microwells. After incubation with cell lysates, GSK-3β (phospho and nonphospho) protein is captured by the coated antibody. Following extensive washing, a phospho-GSK-3β (Ser9) rabbit mAb is added to detect the captured phospho-GSK-3β protein. Anti-rabbit IgG, HRP-linked antibody is then used to recognize the bound detection antibody. HRP substrate TMB is added to develop color. The magnitude of the absorbance for this developed color is proportional to the quantity of GSK-3β phosphorylated at Ser9. Antibodies in kit are custom formulations specific to kit.

*Antibodies in kit are custom formulations specific to kit.

Specificity/Sensitivity: PathScan® Phospho-GSK-3β (Ser9) Sandwich ELISA Kit #7311 detects endogenous levels of human GSK-3β protein when phosphorylated at Ser9 as shown in Figure 1. The kit sensitivity is shown in Figure 2. This kit detects proteins from the indicated species, as determined through in-house testing, but may also detect homologous proteins from other species.

Background: Glycogen synthase kinase-3 (GSK-3) was initially identified as an enzyme that regulates glycogen synthesis in response to insulin (1). GSK-3 is a ubiquitously expressed serine/threonine protein kinase that phosphorylates and inactivates glycogen synthase. GSK-3 is a critical downstream element of the PI3K/Akt cell survival pathway whose activity can be inhibited by Akt-mediated phosphorylation at Ser21 of GSK-3α and Ser9 of GSK-3β (2,3). GSK-3 has been implicated in the regulation of cell fate in *Dictyostelium* and is a component of the Wnt signaling pathway required for *Drosophila*, *Xenopus*, and mammalian development (4). GSK-3 has been shown to regulate cyclin D1 proteolysis and subcellular localization (5).

Background References:

- Welsh, G.I. et al. (1996) *Trends Cell. Biol.* 6, 274-279.
- Srivastava, A.K. and Pandey, S.K. (1998) *Mol. Cell. Biochem.* 182, 135-141.
- Cross, D.A. et al. (1995) *Nature* 378, 785-789.
- Nusse, R. (1997) *Cell* 89, 321-323.
- Diehl, J.A. et al. (1998) *Genes Dev.* 12, 3499-3511.

Product Includes	Item #	Kit Quantity	Color	Storage Temp
GSK-3beta Mouse mAb Coated Microwells*	88704	96 tests		4°C
Phospho-GSK-3β (Ser9) Rabbit Detection mAb	14086	1 each	Green (Lyophilized)	4°C
Anti-rabbit IgG, HRP-linked Antibody (ELISA Formulated)	13272	1 each	Red (Lyophilized)	4°C
Detection Antibody Diluent	13339	11 ml	Green	4°C
HRP Diluent	13515	11 ml	Red	4°C
TMB Substrate	7004	11 ml		4°C
STOP Solution	7002	11 ml		4°C
Sealing Tape	54503	2 sheets		4°C
ELISA Wash Buffer (20X)	9801	25 ml		4°C
ELISA Sample Diluent	11083	25 ml	Blue	4°C
Cell Lysis Buffer (10X)	9803	15 ml		-20°C

*12 8-well modules – Each module is designed to break apart for 8 tests.

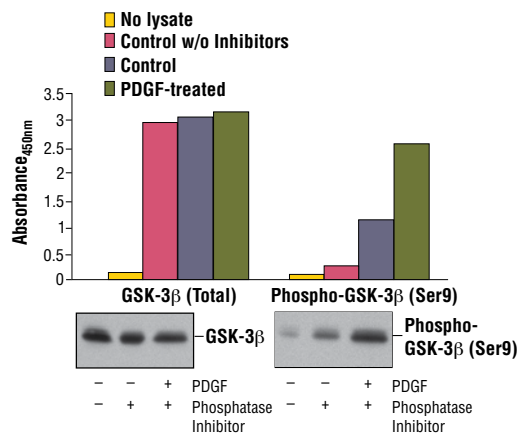


Figure 1. Treatment of NIH/3T3 cells with hPDGF-BB #8912 stimulates phosphorylation of GSK-3β at Ser9, as detected by PathScan® Phospho-GSK-3β (Ser9) Sandwich ELISA Kit #7311, but does not affect levels of total GSK-3β protein detected by PathScan® Total GSK-3β Sandwich ELISA Kit #7265. The absorbance readings at 450 nm are shown in the upper figure, while the corresponding western blots using GSK-3β (27C10) Rabbit mAb #9315 (left panel) or Phospho-GSK-3β (Ser9) (D85E12) XP® Rabbit mAb #5558 (right panel) is shown in the lower figure.

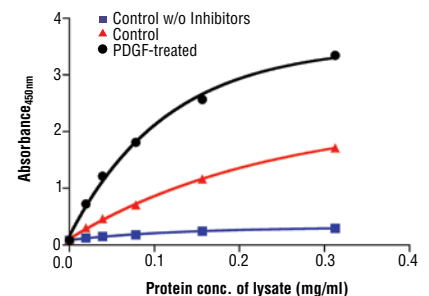


Figure 2. The relationship between protein concentration of lysates from untreated and PDGF-treated NIH/3T3 cells and the absorbance at 450 nm is shown. After starvation, NIH/3T3 cells (85% confluence) were treated with hPDGF-BB #8912 (50 ng/ml) for 10-15 minutes at 37°C and then lysed.

PathScan® Sandwich ELISA Protocol (for kits with Lyophilized Antibodies)

A Solutions and Reagents

NOTE: Prepare solutions with purified water.

- Microwell strips:** Bring all to room temperature before use.
- Detection Antibody:** Supplied lyophilized as a green colored cake or powder. Add 1.0 ml of Detection Antibody Diluent (green solution) to yield a concentrated stock solution. Incubate at room temperature for 5 min with occasional gentle mixing to fully reconstitute. To make the final working solution, add the full 1.0 ml volume of reconstituted Detection Antibody to 10.0 ml of Detection Antibody Diluent in a clean tube and gently mix. Unused working solution may be stored for 4 weeks at 4°C.
- HRP-Linked Antibody*:** Supplied lyophilized as a red colored cake or powder. Add 1.0 ml of HRP Diluent (red solution) to yield a concentrated stock solution. Incubate at room temperature for 5 min with occasional gentle mixing to fully reconstitute. To make the final working solution, add the full 1.0 ml volume of reconstituted HRP-Linked Antibody to 10.0 ml of HRP Diluent in a clean tube and gently mix. Unused working solution may be stored for 4 weeks at 4°C.
- Detection Antibody Diluent:** Green colored diluent for reconstitution and dilution of the detection antibody (11 ml provided).
- HRP Diluent:** Red colored diluent for reconstitution and dilution of the HRP-Linked Antibody (11 ml provided).
- Sample Diluent:** Blue colored diluent provided for dilution of cell lysates.
- 1X Wash Buffer:** Prepare by diluting 20X Wash Buffer (included in each PathScan® Sandwich ELISA Kit) in purified water.
- Cell Lysis Buffer:** 10X Cell Lysis Buffer #9803: This buffer can be stored at 4°C for short-term use (1–2 weeks). Recommended: Add 1 mM phenylmethyl-sulfonyl fluoride (PMSF) immediately before use.
- TMB Substrate** (#7004).
- STOP Solution** (#7002).

*Note: Some PathScan® ELISA Kits may include HRP-Linked Streptavidin in place of HRP-Linked Antibody.

B Preparing Cell Lysates

For adherent cells.

- Aspirate media when the culture reaches 80–90% confluence. Treat cells by adding fresh media containing regulator for desired time.
- Remove media and rinse cells once with ice-cold 1X PBS.
- Remove PBS and add 0.5 ml ice-cold 1X Cell Lysis Buffer plus 1 mM PMSF to each plate (10 cm diameter) and incubate the plate on ice for 5 min.
- Scrape cells off the plate and transfer to an appropriate tube. Keep on ice.
- Sonicate lysates on ice.
- Microcentrifuge for 10 min (14,000 rpm) at 4°C and transfer the supernatant to a new tube. The supernatant is the cell lysate. Store at –80°C in single-use aliquots.

For suspension cells

- Remove media by low speed centrifugation (~1200 rpm) when the culture reaches 0.5–1.0 × 10⁶ viable cells/ml. Treat cells by adding fresh media containing regulator for desired time.
- Collect cells by low speed centrifugation (~1200 rpm) and wash once with 5–10 ml ice-cold 1X PBS.
- Cells harvested from 50 ml of growth media can be lysed in 2.0 ml of 1X Cell Lysis Buffer plus 1 mM PMSF.
- Sonicate lysates on ice.
- Microcentrifuge for 10 min (14,000 rpm) at 4°C and transfer the supernatant to a new tube. The supernatant is the cell lysate. Store at –80°C in single-use aliquots.

C Test Procedure

- After the microwell strips have reached room temperature, break off the required number of microwells. Place the microwells in the strip holder. Unused microwells must be resealed and stored at 4°C immediately.
- Cell lysates can be undiluted or diluted with Sample Diluent (supplied in each PathScan® Sandwich ELISA Kit, blue color). Individual datasheets for each kit provide a sensitivity curve that serves as a reference for selection of an appropriate starting lysate concentration. The sensitivity curve shows typical kit assay results across a range of lysate concentration points.
- Add 100 µl of each undiluted or diluted cell lysate to the appropriate well. Seal with tape and press firmly onto top of microwells. Incubate the plate for 2 hr at 37°C. Alternatively, the plate can be incubated overnight at 4°C.
- Gently remove the tape and wash wells:
 - Discard plate contents into a receptacle.
 - Wash 4 times with 1X Wash Buffer, 200 µl each time for each well.
 - For each wash, strike plates on fresh towels hard enough to remove the residual solution in each well, but do not allow wells to completely dry at any time.
 - Clean the underside of all wells with a lint-free tissue.
- Add 100 µl of reconstituted Detection Antibody (green color) to each well (refer to Section A, Step 2). Seal with tape and incubate the plate at 37°C for 1 hr.
- Repeat wash procedure (Section C, Step 4).
- Add 100 µl of reconstituted HRP-Linked secondary antibody (red color) to each well (refer to Section A, Step 3). Seal with tape and incubate the plate for 30 min at 37°C.
- Repeat wash procedure (Section C, Step 4).
- Add 100 µl of TMB Substrate to each well. Seal with tape and incubate the plate for 10 min at 37°C or 30 min at 25°C.
- Add 100 µl of STOP Solution to each well. Shake gently for a few seconds.

NOTE: Initial color of positive reaction is blue, which changes to yellow upon addition of STOP Solution.

- Read results.
 - Visual Determination:** Read within 30 min after adding STOP Solution.
 - Spectrophotometric Determination:** Wipe underside of wells with a lint-free tissue. Read absorbance at 450 nm within 30 min after adding STOP Solution.