

Store at
-20°C

#71536

Keratin 5 (E2T4B) XP® Rabbit mAb (IHC Preferred)



Support: +1-978-867-2388 (U.S.)
www.cellsignal.com/support

Orders: 877-616-2355 (U.S.)
orders@cellsignal.com

Entrez-Gene ID #3852
UniProt ID #P13647

New 08/19

For Research Use Only. Not For Use In Diagnostic Procedures.

Applications
IHC-P
Endogenous

Species Cross-Reactivity
H, M

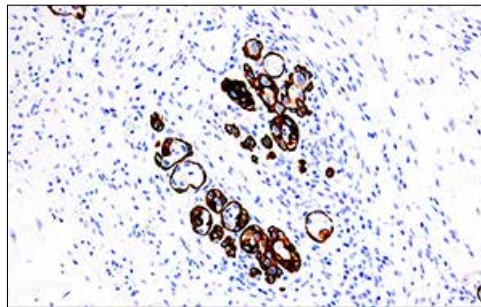
Molecular Wt.
62 kDa

Isotype
Rabbit IgG*

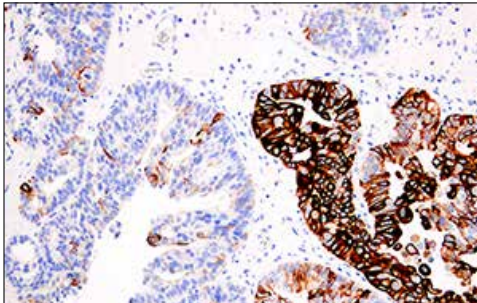
Background: Keratins (cytokeratins) are intermediate filament proteins that are mainly expressed in epithelial cells. Keratin heterodimers composed of an acidic keratin (or type I keratin, keratins 9 to 23) and a basic keratin (or type II keratin, keratins 1 to 8) assemble to form filaments (1,2). Keratin isoforms demonstrate tissue- and differentiation-specific profiles that make them useful as research biomarkers (1). Research studies have shown that mutations in keratin genes are associated with skin disorders, liver and pancreatic diseases, and inflammatory intestinal diseases (3-6).

Specificity/Sensitivity: Keratin 5 (E2T4B) XP® Rabbit mAb recognizes endogenous levels of total keratin 5 protein.

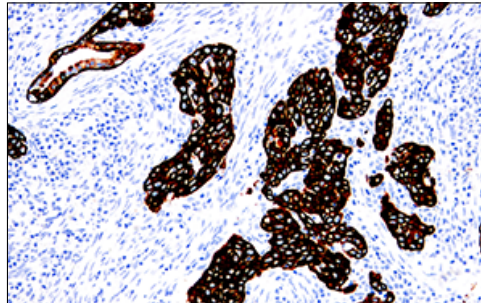
Source/Purification: Monoclonal antibody is produced by immunizing animals with a synthetic peptide corresponding to residues surrounding Val578 of human keratin 5 protein.



Immunohistochemical analysis of paraffin-embedded human squamous carcinoma of the tongue using Keratin 5 (E2T4B) XP® Rabbit mAb (IHC Preferred) performed on the Leica® BOND™ Rx.



Immunohistochemical analysis of paraffin-embedded human endometrioid adenocarcinoma using Keratin 5 (E2T4B) XP® Rabbit mAb (IHC Preferred) performed on the Leica® BOND™ Rx.



Immunohistochemical analysis of paraffin-embedded human mucoepidermoid carcinoma of the larynx using Keratin 5 (E2T4B) XP® Rabbit mAb (IHC Preferred) performed on the Leica® BOND™ Rx.

Storage: Supplied in 10 mM sodium HEPES (pH 7.5), 150 mM NaCl, 100 µg/ml BSA, 50% glycerol and less than 0.02% sodium azide. Store at -20°C. Do not aliquot the antibody.

***Anti-rabbit secondary antibodies must be used to detect this antibody.**

Recommended Antibody Dilutions:

Immunohistochemistry (Paraffin) 1:250-1:1000
Optimal IHC dilutions determined using SignalStain® Boost IHC Detection Reagent.
Unmasking buffer: SignalStain® Citrate Unmasking Solution (10X) #14746
Antibody diluent: SignalStain® Antibody Diluent #8112
Detection reagent: SignalStain® Boost (HRP, Rabbit) #8114

Immunohistochemistry (Leica® BOND™) 1:125-1:500

For product specific protocols and a complete listing of recommended companion products please see the product web page at www.cellsignal.com.

Background References:

- (1) Moll, R. et al. (1982) *Cell* 31, 11-24.
- (2) Chang, L. and Goldman, R.D. (2004) *Nat Rev Mol Cell Biol* 5, 601-13.
- (3) Ramaekers, F.C. and Bosman, F.T. (2004) *J Pathol* 204, 351-4.
- (4) Lane, E.B. and McLean, W.H. (2004) *J Pathol* 204, 355-66.
- (5) Zatloukal, K. et al. (2004) *J Pathol* 204, 367-76.
- (6) Owens, D.W. and Lane, E.B. (2004) *J Pathol* 204, 377-85.

BOND is a trademark of Leica Biosystems Melbourne Pty. Ltd. No affiliation or sponsorship between CST and Leica Microsystems IR GmbH or Leica Biosystems Melbourne Pty. Ltd is implied.
LEICA is a registered trademark of Leica Microsystems IR GmbH.

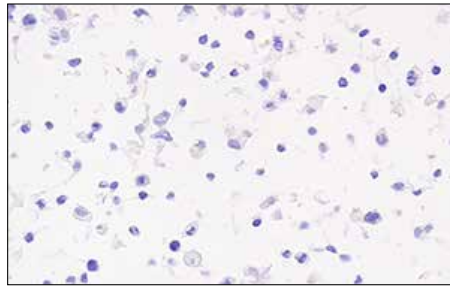
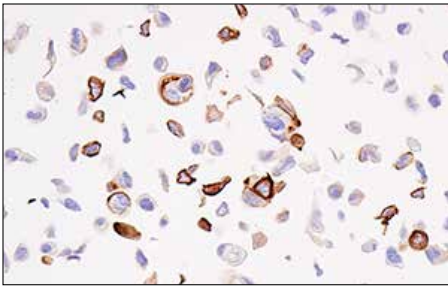
Thank you for your recent purchase. If you would like to provide a review visit cellsignal.com/comments.

www.cellsignal.com

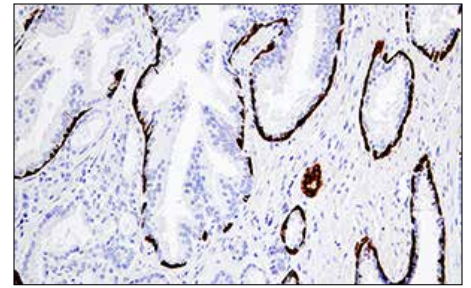
© 2019 Cell Signaling Technology, Inc.

SignalStain, XP, and Cell Signaling Technology are trademarks of Cell Signaling Technology, Inc.

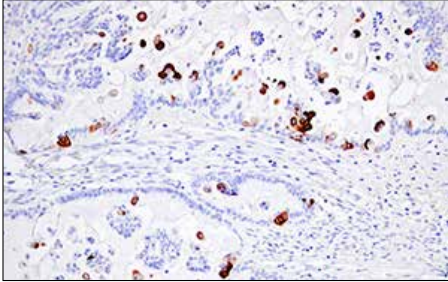
Applications: W—Western IP—Immunoprecipitation IHC—Immunohistochemistry ChIP—Chromatin Immunoprecipitation IF—Immunofluorescence F—Flow cytometry E-P—ELISA-Peptide **Species Cross-Reactivity:** H—human M—mouse R—rat Hm—hamster Mk—monkey Mi—mink C—chicken Dm—D. melanogaster X—Xenopus Z—zebrafish B—bovine Dg—dog Pg—pig Sc—S. cerevisiae Ce—C. elegans Hr—Horse All—all species expected **Species** enclosed in parentheses are predicted to react based on 100% homology.



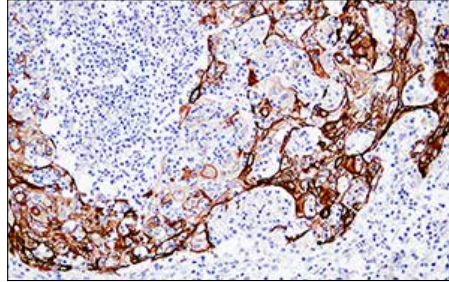
Immunohistochemical analysis of paraffin-embedded A-431 cell pellet (left, positive) or SNB19 cell pellet (right, negative) using Keratin 5 (E2T4B) XP[®] Rabbit mAb (IHC Preferred).



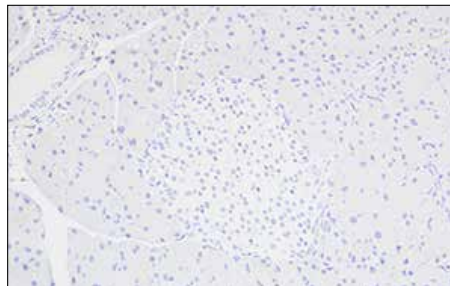
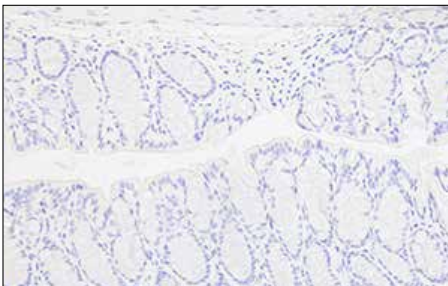
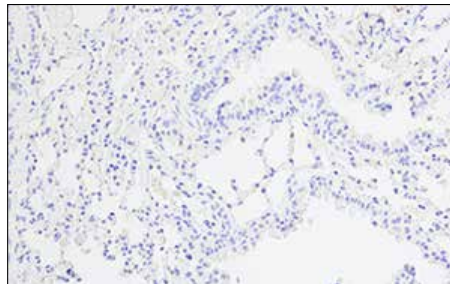
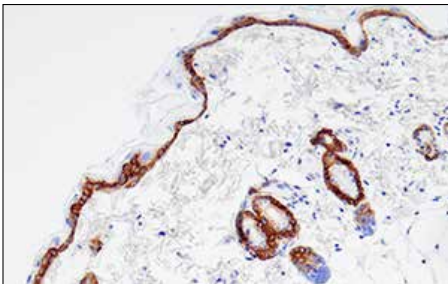
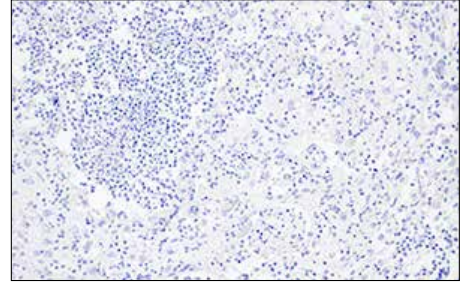
Immunohistochemical analysis of paraffin-embedded human prostate carcinoma using Keratin 5 (E2T4B) XP[®] Rabbit mAb (IHC Preferred).



Immunohistochemical analysis of paraffin-embedded human ovarian serous carcinoma using Keratin 5 (E2T4B) XP[®] Rabbit mAb (IHC Preferred).



Immunohistochemical analysis of paraffin-embedded human squamous cell lung carcinoma using Keratin 5 (E2T4B) XP[®] Rabbit mAb (IHC Preferred) (left) compared to concentration-matched Rabbit (DA1E) mAb IgG XP[®] Isotype Control #3900 (right).



Immunohistochemical analysis of paraffin-embedded normal mouse tissues: skin (top-left), lung (top-right), colon (bottom-left), and pancreas (bottom-right) using Keratin 5 (E2T4B) XP[®] Rabbit mAb (IHC Preferred).

Thank you for your recent purchase. If you would like to provide a review visit [cellsignal.com/comments](https://www.cellsignal.com/comments).

www.cellsignal.com