

#7145C Store at 4°C

PathScan® Phospho-c-Jun (Ser63) Sandwich ELISA Kit II



✓ 1 Kit
(96 assays)

Orders ■ 877-616-CELL (2355)
orders@cellsignal.com
Support ■ 877-678-TECH (8324)
info@cellsignal.com
Web ■ www.cellsignal.com

rev. 08/01/17

For Research Use Only. Not For Use In Diagnostic Procedures.

Species Cross-Reactivity: H, M, R

Description: CST's PathScan® Phospho-c-Jun (Ser63) Sandwich ELISA Kit II is a solid phase sandwich enzyme-linked immunosorbent assay (ELISA) that detects endogenous levels of phospho-c-Jun (Ser63) protein. A phospho-c-Jun (Ser63)-specific rabbit mAb has been coated onto the microwells. After incubation with cell lysates, phospho-c-Jun (Ser63) protein is captured by the coated antibody. Following extensive washing, c-Jun Mouse mAb is added to detect the captured phospho-c-Jun protein. HRP-linked anti-mouse antibody (#7076) is then used to recognize the bound detection antibody. HRP substrate, TMB, is added to develop color. The magnitude of optical density for this developed color is proportional to the quantity of phospho-c-Jun (Ser63) protein.

*Antibodies in kit are custom formulations specific to the kit.

Specificity/Sensitivity: PathScan® Phospho-c-Jun (Ser63) Sandwich ELISA Kit II detects endogenous levels of Phospho-c-Jun (Ser63) protein. As shown in Figure 1, using this Sandwich ELISA Kit #7145, a significant induction of phospho-c-Jun (Ser63) in UV-treated 293 cells can be detected. However, the level of total c-Jun protein (phospho and non-phospho), detected by the Total c-Jun Sandwich ELISA Kit II #7150, remains unchanged. Both C6 and NIH/3T3 cells treated with UV light or anisomycin show similar results (data not shown).

This kit is more sensitive than kit #7260 (figure 2). This kit detects proteins from the indicated species, as determined through in-house testing, but may also detect homologous proteins from other species.

Background: c-Jun is a member of the Jun Family containing c-Jun, JunB and JunD, and is a component of the transcription factor AP-1 (activator protein-1). AP-1 is composed of dimers of Fos, Jun and ATF family members and binds to and activates transcription at TRE/AP-1 elements (reviewed in 1).

Extracellular signals including growth factors, chemokines and stress activate AP-1-dependent transcription. The transcriptional activity of c-Jun is regulated by phosphorylation at Ser63 and Ser73 through SAPK/JNK (reviewed in 2). Knock-out studies in mice have shown that c-Jun is essential for embryogenesis (3), and subsequent studies have demonstrated roles for c-Jun in various tissues and developmental processes including axon regeneration (4), liver regeneration (5) and T cell development (6).

AP-1 regulated genes exert diverse biological functions including cell proliferation, differentiation, and apoptosis, as well as transformation, invasion and metastasis, depending

Product Includes	Item #	Kit Quantity	Color	Storage Temp
Phospho-c-Jun (Ser63) Rabbit mAb Coated Microwells*	29027	96 tests		4°C
c-Jun Mouse Detection mAb	14257	1 each	Green (Lyophilized)	4°C
Anti-mouse IgG, HRP-linked Antibody (ELISA Formulated)	13304	1 each	Red (Lyophilized)	4°C
Detection Antibody Diluent	13339	11 ml	Green	4°C
HRP Diluent	13515	11 ml	Red	4°C
TMB Substrate	7004	11 ml		4°C
STOP Solution	7002	11 ml		4°C
Sealing Tape	54503	2 sheets		4°C
ELISA Wash Buffer (20X)	9801	25 ml		4°C
ELISA Sample Diluent	11083	25 ml	Blue	4°C
Cell Lysis Buffer (10X)	9803	15 ml		-20°C

*12 8-well modules – Each module is designed to break apart for 8 tests.

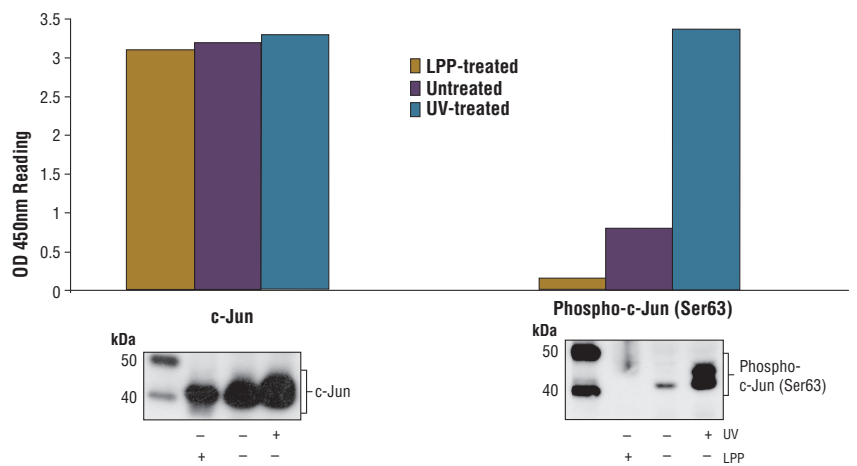


Figure 1: Treatment of 293 cells with UV stimulates phosphorylation of c-Jun at Ser63, detected by PathScan® Phospho-c-Jun (Ser63) Sandwich ELISA Kit II #7145, but does not affect the level of total c-Jun protein detected by PathScan® Total c-Jun Sandwich ELISA Kit II #7150. λ protein phosphatase (LPP) treatment of control cell lysates (37°C for 90 minutes) abolished the basal phosphorylation of c-Jun in control lysates shown in both Sandwich ELISA and Western analysis. The OD₄₅₀ readings are shown in the top figure, while the corresponding Western blot, using Phospho-c-Jun (Ser63) Rabbit mAb #2378 (right panel) or c-Jun Rabbit mAb (6H5) #2374 (left panel), is shown in the bottom figure.

on cell type and context (7-9). Other target genes regulate survival as well as hypoxia and angiogenesis (8,10). c-Jun has emerged as a promising therapeutic target for cancer, vascular remodeling, acute inflammation, as well as rheumatoid arthritis (11,12).

© 2014 Cell Signaling Technology, Inc. PathScan® and Cell Signaling Technology® are trademarks of Cell Signaling Technology, Inc.

Background References:

- (1) Jochum, W. et al. (2001) *Oncogene* 20, 2401-12.
- (2) Davis, R.J. (2000) *Cell* 103, 239-52.
- (3) Hilberg, F. et al. (1993) *Nature* 365, 179-81.
- (4) Raivich, G. et al. (2004) *Neuron* 43, 57-67.
- (5) Behrens, A. et al. (2002) *EMBO J* 21, 1782-90.
- (6) Riera-Sans, L. and Behrens, A. (2007) *J Immunol* 178, 5690-700.
- (7) Leppä, S. and Bohmann, D. (1999) *Oncogene* 18, 6158-62.
- (8) Shaulian, E. and Karin, M. (2002) *Nat Cell Biol* 4, E131-6.
- (9) Weiss, C. and Bohmann, D. (2004) *Cell Cycle* 3, 111-3.
- (10) Karamouzis, M.V. et al. (2007) *Mol Cancer Res* 5, 109-20.
- (11) Kim, S. and Iwao, H. (2003) *J Pharmacol Sci* 91, 177-81.
- (12) Dass, C.R. and Choong, P.F. (2008) *Pharmazie* 63, 411-4.

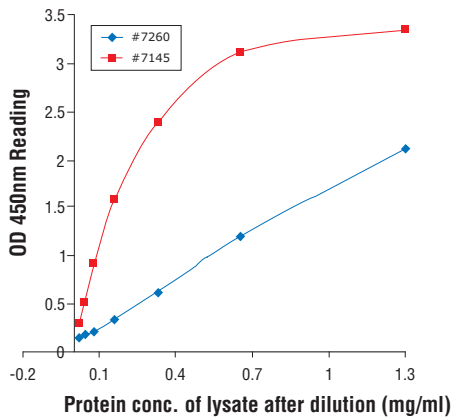


Figure 2: Linear relationship between protein concentration of lysates from UV-treated 293 cells and kit assay optical density readings. Pathscan® Phospho-c-Jun (Ser63) Sandwich ELISA Kit II #7145 is more sensitive than kit # 7260 over a range of lysate concentrations. 293 cells (70-90% confluence) were treated without or with UV and lysed after incubation at 37°C for 30 minutes.

PathScan® Sandwich ELISA Protocol (for kits with Lyophilized Antibodies)

A Solutions and Reagents

NOTE: Prepare solutions with purified water.

1. **Microwell strips:** Bring all to room temperature before use.
2. **Detection Antibody:** Supplied lyophilized as a green colored cake or powder. Add 1.0 ml of Detection Antibody Diluent (green solution) to yield a concentrated stock solution. Incubate at room temperature for 5 min with occasional gentle mixing to fully reconstitute. To make the final working solution, add the full 1.0 ml volume of reconstituted Detection Antibody to 10.0 ml of Detection Antibody Diluent in a clean tube and gently mix. Unused working solution may be stored for 4 weeks at 4°C.
3. **HRP-Linked Antibody*:** Supplied lyophilized as a red colored cake or powder. Add 1.0 ml of HRP Diluent (red solution) to yield a concentrated stock solution. Incubate at room temperature for 5 min with occasional gentle mixing to fully reconstitute. To make the final working solution, add the full 1.0 ml volume of reconstituted HRP-Linked Antibody to 10.0 ml of HRP Diluent in a clean tube and gently mix. Unused working solution may be stored for 4 weeks at 4°C.
4. **Detection Antibody Diluent:** Green colored diluent for reconstitution and dilution of the detection antibody (11 ml provided).
5. **HRP Diluent:** Red colored diluent for reconstitution and dilution of the HRP-Linked Antibody (11 ml provided).
6. **Sample Diluent:** Blue colored diluent provided for dilution of cell lysates.
7. **1X Wash Buffer:** Prepare by diluting 20X Wash Buffer (included in each PathScan® Sandwich ELISA Kit) in purified water.
8. **Cell Lysis Buffer:** 10X Cell Lysis Buffer #9803: This buffer can be stored at 4°C for short-term use (1–2 weeks). Recommended: Add 1 mM phenylmethyl-sulfonyl fluoride (PMSF) immediately before use.
9. **TMB Substrate** (#7004).
10. **STOP Solution** (#7002).

*Note: Some PathScan® ELISA Kits may include HRP-Linked Streptavidin in place of HRP-Linked Antibody.

B Preparing Cell Lysates

For adherent cells.

1. Aspirate media when the culture reaches 80–90% confluence. Treat cells by adding fresh media containing regulator for desired time.
2. Remove media and rinse cells once with ice-cold 1X PBS.
3. Remove PBS and add 0.5 ml ice-cold 1X Cell Lysis Buffer plus 1 mM PMSF to each plate (10 cm diameter) and incubate the plate on ice for 5 min.
4. Scrape cells off the plate and transfer to an appropriate tube. Keep on ice.
5. Sonicate lysates on ice.
6. Microcentrifuge for 10 min (14,000 rpm) at 4°C and transfer the supernatant to a new tube. The supernatant is the cell lysate. Store at –80°C in single-use aliquots.

For suspension cells

1. Remove media by low speed centrifugation (~1200 rpm) when the culture reaches 0.5–1.0 × 10⁶ viable cells/ml. Treat cells by adding fresh media containing regulator for desired time.
2. Collect cells by low speed centrifugation (~1200 rpm) and wash once with 5–10 ml ice-cold 1X PBS.
3. Cells harvested from 50 ml of growth media can be lysed in 2.0 ml of 1X Cell Lysis Buffer plus 1 mM PMSF.
4. Sonicate lysates on ice.
5. Microcentrifuge for 10 min (14,000 rpm) at 4°C and transfer the supernatant to a new tube. The supernatant is the cell lysate. Store at –80°C in single-use aliquots.

C Test Procedure

1. After the microwell strips have reached room temperature, break off the required number of microwells. Place the microwells in the strip holder. Unused microwells must be resealed and stored at 4°C immediately.
2. Cell lysates can be undiluted or diluted with Sample Diluent (supplied in each PathScan® Sandwich ELISA Kit, blue color). Individual datasheets for each kit provide a sensitivity curve that serves as a reference for selection of an appropriate starting lysate concentration. The sensitivity curve shows typical kit assay results across a range of lysate concentration points.
3. Add 100 µl of each undiluted or diluted cell lysate to the appropriate well. Seal with tape and press firmly onto top of microwells. Incubate the plate for 2 hr at 37°C. Alternatively, the plate can be incubated overnight at 4°C.
4. Gently remove the tape and wash wells:
 - a. Discard plate contents into a receptacle.
 - b. Wash 4 times with 1X Wash Buffer, 200 µl each time for each well.
 - c. For each wash, strike plates on fresh towels hard enough to remove the residual solution in each well, but do not allow wells to completely dry at any time.
 - d. Clean the underside of all wells with a lint-free tissue.
5. Add 100 µl of reconstituted Detection Antibody (green color) to each well (refer to Section A, Step 2). Seal with tape and incubate the plate at 37°C for 1 hr.
6. Repeat wash procedure (Section C, Step 4).
7. Add 100 µl of reconstituted HRP-Linked secondary antibody (red color) to each well (refer to Section A, Step 3). Seal with tape and incubate the plate for 30 min at 37°C.
8. Repeat wash procedure (Section C, Step 4).
9. Add 100 µl of TMB Substrate to each well. Seal with tape and incubate the plate for 10 min at 37°C or 30 min at 25°C.
10. Add 100 µl of STOP Solution to each well. Shake gently for a few seconds.

NOTE: Initial color of positive reaction is blue, which changes to yellow upon addition of STOP Solution.

11. Read results.
 - a. **Visual Determination:** Read within 30 min after adding STOP Solution.
 - b. **Spectrophotometric Determination:** Wipe underside of wells with a lint-free tissue. Read absorbance at 450 nm within 30 min after adding STOP Solution.