

**#7108C** Store at 4°C

# PathScan® Phospho-TrkB (panTyr) Sandwich ELISA Kit



1 Kit  
 (96 assays)

**Orders** ■ 877-616-CELL (2355)  
 orders@cellsignal.com  
**Support** ■ 877-678-TECH (8324)  
 info@cellsignal.com  
**Web** ■ www.cellsignal.com

rev. 08/01/17

**For Research Use Only. Not For Use In Diagnostic Procedures.**

### Species Cross-Reactivity: H

**Description:** The PathScan® Phospho-TrkB (panTyr) Sandwich ELISA Kit is a solid phase sandwich enzyme-linked immunosorbent assay (ELISA) that detects transfected levels of TrkB when phosphorylated on tyrosine residues. A TrkB mouse antibody has been coated onto the microwells. After incubation with cell lysates, TrkB (phospho and nonphospho) is captured by the coated antibody. Following extensive washing, a biotinylated phospho-tyrosine detection antibody is added to detect tyrosine phosphorylation of the captured TrkB protein. HRP-linked streptavidin is then used to recognize the bound detection antibody. HRP substrate, TMB, is added to develop color. The magnitude of the absorbance for this developed color is proportional to the quantity of TrkB phosphorylated on tyrosines.

Antibodies in kit are custom formulations specific to kit.

**Specificity/Sensitivity:** CST's PathScan® Phospho-TrkB (panTyr) Sandwich ELISA Kit #7108 detects transfected levels of phospho-TrkB protein when tyrosines are phosphorylated (see Figure 1). The kit sensitivity is shown in figure 2. This kit detects proteins from the indicated species, as determined through in-house testing, but may also detect homologous proteins from other species.

**Background:** The family of Trk receptor tyrosine kinases consists of TrkA, TrkB, and TrkC. While the sequence of these family members is highly conserved, they are activated by different neurotrophins: TrkA by NGF, TrkB by BDNF or NT4, and TrkC by NT3 (1). Neurotrophin signaling through these receptors regulates a number of physiological processes, such as cell survival, proliferation, neural development, and axon and dendrite growth and patterning (1). In the adult nervous system, the Trk receptors regulate synaptic strength and plasticity. TrkA regulates proliferation and is important for development and maturation of the nervous system (2). Phosphorylation at Tyr490 is required for Shc association and activation of the Ras-MAP kinase cascade (3,4). Residues Tyr674/675 lie within the catalytic domain, and phosphorylation at these sites reflects TrkA kinase activity (3-6). Point mutations, deletions, and chromosomal rearrangements (chimeras) cause ligand-independent receptor dimerization and activation of TrkA (7-10). TrkA is activated in many malignancies including breast, ovarian, prostate, and thyroid carcinomas (8-13). Research studies suggest that expression of TrkA in neuroblastomas may be a good prognostic marker as TrkA signals growth arrest and differentiation of cells originating from the neural crest (10).

The phosphorylation sites are conserved between TrkA and TrkB: Tyr490 of TrkA corresponds to Tyr512 in TrkB, and Tyr674/675 of TrkA to Tyr706/707 in TrkB of the human

Product Includes	Item #	Kit Quantity	Color	Storage Temp
TrkB Mouse mAb Coated Microwells*	63396	96 tests		4°C
Phospho-Tyrosine Mouse Detection mAb (Biotinylated)	14055	1 each	Green (Lyophilized)	4°C
HRP-linked Streptavidin (ELISA Formulated)	11805	1 each	Red (Lyophilized)	4°C
Detection Antibody Diluent	13339	11 ml	Green	4°C
HRP Diluent	13515	11 ml	Red	4°C
TMB Substrate	7004	11 ml		4°C
STOP Solution	7002	11 ml		4°C
Sealing Tape	54503	2 sheets		4°C
ELISA Wash Buffer (20X)	9801	25 ml		4°C
ELISA Sample Diluent	11083	25 ml	Blue	4°C
Cell Lysis Buffer (10X)	9803	15 ml		-20°C

\*12 8-well modules – Each module is designed to break apart for 8 tests.

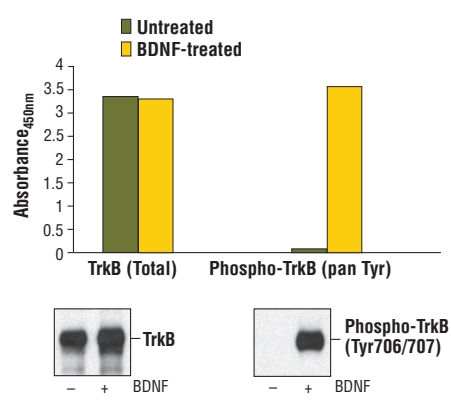


Figure 1: Treatment of 3T3/TrkB cells with BDNF (#3897) stimulates tyrosine-phosphorylation of TrkB, detected by PathScan® Phospho-TrkB (panTyr) Sandwich ELISA Kit #7108, but does not affect the level of total TrkB detected by PathScan® Total TrkB Sandwich ELISA Kit #7106. Absorbance at 450 nm is shown in the top figure, while the corresponding Western blots using Phospho-TrkA (Tyr674/675)/TrkB (Tyr706/707) (C50F3) Rabbit mAb #4621 (right panel) or TrkB (80E3) Rabbit mAb #4603 (left panel), are shown in the bottom figure. The human TrkB is transfected and expressed in NIH/3T3 cells.

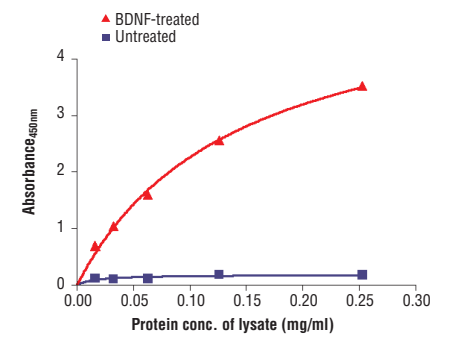


Figure 2: The relationship between protein concentration of lysates from untreated and BDNF-treated 3T3/TrkB cells and the absorbance at 450 nm is shown. After starvation, 3T3/TrkB cells (85% confluence) were treated with BDNF (100 ng/ml) for 2 min at 37°C, and then lysed.

sequence (14). TrkB is overexpressed in tumors, such as neuroblastoma, prostate adenocarcinoma, and pancreatic ductal adenocarcinoma (15). Research studies have shown that in neuroblastomas, overexpression of TrkB correlates with an unfavorable disease outcome when autocrine loops

signaling tumor survival are potentiated by additional overexpression of brain-derived neurotrophic factor (BDNF) (16-18). An alternatively spliced truncated TrkB isoform lacking the kinase domain is overexpressed in Wilms' tumors and this isoform may act as a dominant-negative regulator of TrkB signaling (17).

© 2014 Cell Signaling Technology, Inc. PathScan® and Cell Signaling Technology® are trademarks of Cell Signaling Technology, Inc.

**Applications Key:** W—Western IP—Immunoprecipitation IHC—Immunohistochemistry ChIP—Chromatin Immunoprecipitation IF—Immunofluorescence F—Flow cytometry E-P—ELISA-Peptide  
**Species Cross-Reactivity Key:** H—human M—mouse R—rat Hm—hamster Mk—monkey Mi—mink C—chicken Dm—D. melanogaster X—Xenopus Z—zebra fish B—bovine  
 Dg—dog Pg—pig Sc—S. cerevisiae All—all species expected Species enclosed in parentheses are predicted to react based on 100% sequence homology.

## PathScan® Sandwich ELISA Protocol (for kits with Lyophilized Antibodies)

### A Solutions and Reagents

**NOTE:** Prepare solutions with purified water.

- Microwell strips:** Bring all to room temperature before use.
- Detection Antibody:** Supplied lyophilized as a green colored cake or powder. Add 1.0 ml of Detection Antibody Diluent (green solution) to yield a concentrated stock solution. Incubate at room temperature for 5 min with occasional gentle mixing to fully reconstitute. To make the final working solution, add the full 1.0 ml volume of reconstituted Detection Antibody to 10.0 ml of Detection Antibody Diluent in a clean tube and gently mix. Unused working solution may be stored for 4 weeks at 4°C.
- HRP-Linked Antibody\*:** Supplied lyophilized as a red colored cake or powder. Add 1.0 ml of HRP Diluent (red solution) to yield a concentrated stock solution. Incubate at room temperature for 5 min with occasional gentle mixing to fully reconstitute. To make the final working solution, add the full 1.0 ml volume of reconstituted HRP-Linked Antibody to 10.0 ml of HRP Diluent in a clean tube and gently mix. Unused working solution may be stored for 4 weeks at 4°C.
- Detection Antibody Diluent:** Green colored diluent for reconstitution and dilution of the detection antibody (11 ml provided).
- HRP Diluent:** Red colored diluent for reconstitution and dilution of the HRP-Linked Antibody (11 ml provided).
- Sample Diluent:** Blue colored diluent provided for dilution of cell lysates.
- 1X Wash Buffer:** Prepare by diluting 20X Wash Buffer (included in each PathScan® Sandwich ELISA Kit) in purified water.
- Cell Lysis Buffer:** 10X Cell Lysis Buffer #9803: This buffer can be stored at 4°C for short-term use (1–2 weeks). Recommended: Add 1 mM phenylmethyl-sulfonyl fluoride (PMSF) immediately before use.
- TMB Substrate** (#7004).
- STOP Solution** (#7002).

\*Note: Some PathScan® ELISA Kits may include HRP-Linked Streptavidin in place of HRP-Linked Antibody.

### B Preparing Cell Lysates

**For adherent cells.**

- Aspirate media when the culture reaches 80–90% confluence. Treat cells by adding fresh media containing regulator for desired time.
- Remove media and rinse cells once with ice-cold 1X PBS.
- Remove PBS and add 0.5 ml ice-cold 1X Cell Lysis Buffer plus 1 mM PMSF to each plate (10 cm diameter) and incubate the plate on ice for 5 min.
- Scrape cells off the plate and transfer to an appropriate tube. Keep on ice.
- Sonicate lysates on ice.
- Microcentrifuge for 10 min (14,000 rpm) at 4°C and transfer the supernatant to a new tube. The supernatant is the cell lysate. Store at –80°C in single-use aliquots.

**For suspension cells**

- Remove media by low speed centrifugation (~1200 rpm) when the culture reaches 0.5–1.0 × 10<sup>6</sup> viable cells/ml. Treat cells by adding fresh media containing regulator for desired time.
- Collect cells by low speed centrifugation (~1200 rpm) and wash once with 5–10 ml ice-cold 1X PBS.
- Cells harvested from 50 ml of growth media can be lysed in 2.0 ml of 1X Cell Lysis Buffer plus 1 mM PMSF.
- Sonicate lysates on ice.
- Microcentrifuge for 10 min (14,000 rpm) at 4°C and transfer the supernatant to a new tube. The supernatant is the cell lysate. Store at –80°C in single-use aliquots.

### C Test Procedure

- After the microwell strips have reached room temperature, break off the required number of microwells. Place the microwells in the strip holder. Unused microwells must be resealed and stored at 4°C immediately.
- Cell lysates can be undiluted or diluted with Sample Diluent (supplied in each PathScan® Sandwich ELISA Kit, blue color). Individual datasheets for each kit provide a sensitivity curve that serves as a reference for selection of an appropriate starting lysate concentration. The sensitivity curve shows typical kit assay results across a range of lysate concentration points.
- Add 100 µl of each undiluted or diluted cell lysate to the appropriate well. Seal with tape and press firmly onto top of microwells. Incubate the plate for 2 hr at 37°C. Alternatively, the plate can be incubated overnight at 4°C.
- Gently remove the tape and wash wells:
  - Discard plate contents into a receptacle.
  - Wash 4 times with 1X Wash Buffer, 200 µl each time for each well.
  - For each wash, strike plates on fresh towels hard enough to remove the residual solution in each well, but do not allow wells to completely dry at any time.
  - Clean the underside of all wells with a lint-free tissue.
- Add 100 µl of reconstituted Detection Antibody (green color) to each well (refer to Section A, Step 2). Seal with tape and incubate the plate at 37°C for 1 hr.
- Repeat wash procedure (Section C, Step 4).
- Add 100 µl of reconstituted HRP-Linked secondary antibody (red color) to each well (refer to Section A, Step 3). Seal with tape and incubate the plate for 30 min at 37°C.
- Repeat wash procedure (Section C, Step 4).
- Add 100 µl of TMB Substrate to each well. Seal with tape and incubate the plate for 10 min at 37°C or 30 min at 25°C.
- Add 100 µl of STOP Solution to each well. Shake gently for a few seconds.

**NOTE:** Initial color of positive reaction is blue, which changes to yellow upon addition of STOP Solution.

- Read results.
  - Visual Determination:** Read within 30 min after adding STOP Solution.
  - Spectrophotometric Determination:** Wipe underside of wells with a lint-free tissue. Read absorbance at 450 nm within 30 min after adding STOP Solution.

#### Background References:

- Huang, E.J. and Reichardt, L.F. (2003) *Annu Rev Biochem* 72, 609–42.
- Segal, R.A. and Greenberg, M.E. (1996) *Annu Rev Neurosci* 19, 463–89.
- Stephens, R.M. et al. (1994) *Neuron* 12, 691–705.
- Marsh, H.N. et al. (2003) *J Cell Biol* 163, 999–1010.
- Obermeier, A. et al. (1993) *EMBO J* 12, 933–41.
- Obermeier, A. et al. (1994) *EMBO J* 13, 1585–90.
- Arevalo, J.C. et al. (2001) *Oncogene* 20, 1229–34.
- Reuther, G.W. et al. (2000) *Mol Cell Biol* 20, 8655–66.
- Greco, A. et al. (1997) *Genes Chromosomes Cancer* 19, 112–23.
- Pierotti, M.A. and Greco, A. (2006) *Cancer Lett* 232, 90–8.
- Lagadec, C. et al. (2009) *Oncogene* 28, 1960–70.
- Greco, A. et al. (2010) *Mol Cell Endocrinol* 321, 44–9.
- Ødegaard, E. et al. (2007) *Hum Pathol* 38, 140–6.
- Huang, E.J. and Reichardt, L.F. (2003) *Annu. Rev. Biochem.* 72, 609–642.
- Geiger, T.R. and Peeper, D.S. (2005) *Cancer Res* 65, 7033–6.
- Han, L. et al. (2007) *Med Hypotheses* 68, 407–9.
- Aoyama, M. et al. (2001) *Cancer Lett* 164, 51–60.
- Desmet, C.J. and Peeper, D.S. (2006) *Cell Mol Life Sci* 63, 755–9.