

#7063C Store at 4°C

# PathScan® Phospho-p70 S6 Kinase (Thr389) Sandwich ELISA Kit



✓ 1 Kit  
(96 assays)

**Orders** ■ 877-616-CELL (2355)  
orders@cellsignal.com  
**Support** ■ 877-678-TECH (8324)  
info@cellsignal.com  
**Web** ■ www.cellsignal.com

rev. 08/01/17

**For Research Use Only. Not For Use In Diagnostic Procedures.**

## Species Cross-Reactivity: H, M

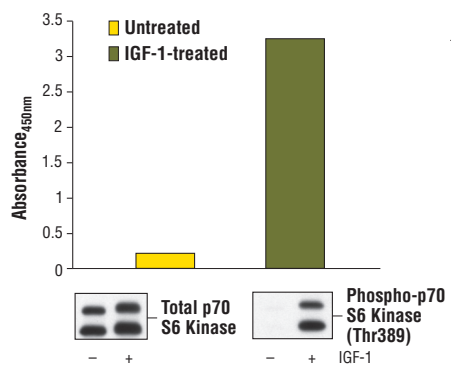
**Description:** The PathScan® Phospho-p70 S6 Kinase (Thr389) Sandwich ELISA Kit is a solid phase sandwich enzyme-linked immunosorbent assay (ELISA) that detects endogenous levels of phospho-p70 S6 kinase phosphorylated at Thr389. A p70 S6 kinase rabbit mAb has been coated onto the microwells. After incubation with cell lysates, p70 S6 kinase is captured by the coated antibody. Following extensive washing, a phospho-p70 S6 kinase (Thr389) mouse detection mAb is added to detect the captured phospho-p70 S6 kinase (Thr389). Anti-mouse IgG, HRP-linked antibody is then used to recognize the bound detection antibody. The HRP substrate TMB is added to develop color. The magnitude of the absorbance for this developed color is proportional to the quantity of p70 S6 kinase phosphorylated at Thr389.

**Specificity/Sensitivity:** The PathScan® Phospho-p70 S6 Kinase (Thr389) Sandwich ELISA Kit detects endogenous levels of p70 S6 kinase when phosphorylated at Thr389, as shown in Figure 1. This kit is predicted to cross-react with the p85 isoform of S6 kinase. The kit sensitivity is shown in Figure 2.

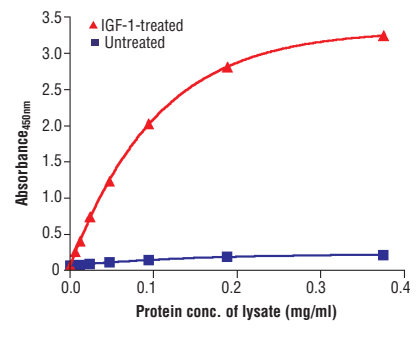
**Background:** p70 S6 kinase is a mitogen activated Ser/Thr protein kinase that is required for cell growth and G1 cell cycle progression (1,2). p70 S6 kinase phosphorylates the S6 protein of the 40S ribosomal subunit and is involved in translational control of 5' oligopyrimidine tract mRNAs (1). A second isoform, p85 S6 kinase, is derived from the same gene and is identical to p70 S6 kinase except for 23 extra residues at the amino terminus, which encode a nuclear localizing signal (1). Both isoforms lie on a mitogen activated signaling pathway downstream of phosphoinositide-3 kinase (PI-3K) and the target of rapamycin, FRAP/mTOR, a pathway distinct from the Ras/MAP kinase cascade (1). The activity of p70 S6 kinase is controlled by multiple phosphorylation events located within the catalytic, linker and pseudosubstrate domains (1). Phosphorylation of Thr229 in the catalytic domain and Thr389 in the linker domain are most critical for kinase function (1). Phosphorylation of Thr389, however, most closely correlates with p70 kinase activity *in vivo* (3). Prior phosphorylation of Thr389 is required for the action of phosphoinositide 3-dependent protein kinase 1 (PDK1) on Thr229 (4,5). Phosphorylation of this site is stimulated by growth factors such as insulin, EGF and FGF, as well as by serum and some G-protein-coupled receptor ligands, and is blocked by wortmannin, LY294002 (PI-3K inhibitor) and rapamycin (FRAP/mTOR inhibitor) (1,6,7). Ser411, Thr421 and Ser424 lie within a Ser-Pro-rich region located in the pseudosubstrate region (1). Phosphorylation at these sites is thought to activate p70 S6 kinase via relief of pseudosubstrate suppression (1,2). Another LY294002 and rapamycin sensitive phosphorylation site, Ser371, is an *in vitro* substrate for mTOR and correlates well with the activity of a partially rapamycin resistant mutant p70 S6 kinase (8).

Product Includes	Item #	Kit Quantity	Color	Storage Temp
p70 S6 Kinase Rabbit mAb Coated Microwells*	87842	96 tests		4°C
Phospho-p70 S6 Kinase (Thr389) Mouse Detection mAb	13960	1 each	Green (Lyophilized)	4°C
Anti-mouse IgG, HRP-linked Antibody (ELISA Formulated)	13304	1 each	Red (Lyophilized)	4°C
Detection Antibody Diluent	13339	11 ml	Green	4°C
HRP Diluent	13515	11 ml	Red	4°C
TMB Substrate	7004	11 ml		4°C
STOP Solution	7002	11 ml		4°C
Sealing Tape	54503	2 sheets		4°C
ELISA Wash Buffer (20X)	9801	25 ml		4°C
ELISA Sample Diluent	11083	25 ml	Blue	4°C
Cell Lysis Buffer (10X)	9803	15 ml		-20°C

\*12 8-well modules – Each module is designed to break apart for 8 tests.



◀ Figure 1. Treatment of MCF7 cells with IGF-1 stimulates phosphorylation of p70 S6 kinase at Thr389 as detected by the PathScan® Phospho-p70 S6 Kinase (Thr389) Sandwich ELISA Kit #7063, but does not affect the level of total p70 S6 kinase. MCF-7 cells were treated with 100 ng/ml IGF-1 #3093 for 20 minutes at 37°C. The absorbance readings at 450 nm are shown in the top figure, while corresponding western blots using p70 S6 Kinase Antibody #9202 (left panel) and Phospho-p70 S6 Kinase (Thr389) (1A5) Mouse mAb #9206 (right panel) are shown in the bottom figure.



◀ Figure 2. The relationship between lysate protein concentration from untreated and IGF-1-treated MCF7 cells and the absorbance at 450 nm using the PathScan® Phospho-p70 S6 Kinase (Thr389) Sandwich ELISA Kit #7063 is shown. MCF-7 cells were treated with 100 ng/ml IGF-1 #3093 for 20 minutes at 37°C and then lysed.

© 2014 Cell Signaling Technology, Inc. PathScan® and Cell Signaling Technology® are trademarks of Cell Signaling Technology, Inc.

**Applications Key:** W—Western IP—Immunoprecipitation IHC—Immunohistochemistry ChIP—Chromatin Immunoprecipitation IF—Immunofluorescence F—Flow cytometry E-P—ELISA-Peptide  
**Species Cross-Reactivity Key:** H—human M—mouse R—rat Hm—hamster Mk—monkey Mi—mink C—chicken Dm—D. melanogaster X—Xenopus Z—zebrafish B—bovine  
 Dg—dog Pg—pig Sc—S. cerevisiae Ce—C. elegans Hr—Horse All—all species expected Species enclosed in parentheses are predicted to react based on 100% homology.

U.S. Patent No. 5,675,063

page 1 of 2

## PathScan® Sandwich ELISA Protocol (for kits with Lyophilized Antibodies)

### A Solutions and Reagents

**NOTE:** Prepare solutions with purified water.

- Microwell strips:** Bring all to room temperature before use.
- Detection Antibody:** Supplied lyophilized as a green colored cake or powder. Add 1.0 ml of Detection Antibody Diluent (green solution) to yield a concentrated stock solution. Incubate at room temperature for 5 min with occasional gentle mixing to fully reconstitute. To make the final working solution, add the full 1.0 ml volume of reconstituted Detection Antibody to 10.0 ml of Detection Antibody Diluent in a clean tube and gently mix. Unused working solution may be stored for 4 weeks at 4°C.
- HRP-Linked Antibody\*:** Supplied lyophilized as a red colored cake or powder. Add 1.0 ml of HRP Diluent (red solution) to yield a concentrated stock solution. Incubate at room temperature for 5 min with occasional gentle mixing to fully reconstitute. To make the final working solution, add the full 1.0 ml volume of reconstituted HRP-Linked Antibody to 10.0 ml of HRP Diluent in a clean tube and gently mix. Unused working solution may be stored for 4 weeks at 4°C.
- Detection Antibody Diluent:** Green colored diluent for reconstitution and dilution of the detection antibody (11 ml provided).
- HRP Diluent:** Red colored diluent for reconstitution and dilution of the HRP-Linked Antibody (11 ml provided).
- Sample Diluent:** Blue colored diluent provided for dilution of cell lysates.
- 1X Wash Buffer:** Prepare by diluting 20X Wash Buffer (included in each PathScan® Sandwich ELISA Kit) in purified water.
- Cell Lysis Buffer:** 10X Cell Lysis Buffer #9803: This buffer can be stored at 4°C for short-term use (1–2 weeks). Recommended: Add 1 mM phenylmethyl-sulfonyl fluoride (PMSF) immediately before use.
- TMB Substrate** (#7004).
- STOP Solution** (#7002).

\*Note: Some PathScan® ELISA Kits may include HRP-Linked Streptavidin in place of HRP-Linked Antibody.

### B Preparing Cell Lysates

**For adherent cells.**

- Aspirate media when the culture reaches 80–90% confluence. Treat cells by adding fresh media containing regulator for desired time.
- Remove media and rinse cells once with ice-cold 1X PBS.
- Remove PBS and add 0.5 ml ice-cold 1X Cell Lysis Buffer plus 1 mM PMSF to each plate (10 cm diameter) and incubate the plate on ice for 5 min.
- Scrape cells off the plate and transfer to an appropriate tube. Keep on ice.
- Sonicate lysates on ice.
- Microcentrifuge for 10 min (14,000 rpm) at 4°C and transfer the supernatant to a new tube. The supernatant is the cell lysate. Store at –80°C in single-use aliquots.

**For suspension cells**

- Remove media by low speed centrifugation (~1200 rpm) when the culture reaches 0.5–1.0 × 10<sup>6</sup> viable cells/ml. Treat cells by adding fresh media containing regulator for desired time.
- Collect cells by low speed centrifugation (~1200 rpm) and wash once with 5–10 ml ice-cold 1X PBS.
- Cells harvested from 50 ml of growth media can be lysed in 2.0 ml of 1X Cell Lysis Buffer plus 1 mM PMSF.
- Sonicate lysates on ice.
- Microcentrifuge for 10 min (14,000 rpm) at 4°C and transfer the supernatant to a new tube. The supernatant is the cell lysate. Store at –80°C in single-use aliquots.

### C Test Procedure

- After the microwell strips have reached room temperature, break off the required number of microwells. Place the microwells in the strip holder. Unused microwells must be resealed and stored at 4°C immediately.
- Cell lysates can be undiluted or diluted with Sample Diluent (supplied in each PathScan® Sandwich ELISA Kit, blue color). Individual datasheets for each kit provide a sensitivity curve that serves as a reference for selection of an appropriate starting lysate concentration. The sensitivity curve shows typical kit assay results across a range of lysate concentration points.
- Add 100 µl of each undiluted or diluted cell lysate to the appropriate well. Seal with tape and press firmly onto top of microwells. Incubate the plate for 2 hr at 37°C. Alternatively, the plate can be incubated overnight at 4°C.
- Gently remove the tape and wash wells:
  - Discard plate contents into a receptacle.
  - Wash 4 times with 1X Wash Buffer, 200 µl each time for each well.
  - For each wash, strike plates on fresh towels hard enough to remove the residual solution in each well, but do not allow wells to completely dry at any time.
  - Clean the underside of all wells with a lint-free tissue.
- Add 100 µl of reconstituted Detection Antibody (green color) to each well (refer to Section A, Step 2). Seal with tape and incubate the plate at 37°C for 1 hr.
- Repeat wash procedure (Section C, Step 4).
- Add 100 µl of reconstituted HRP-Linked secondary antibody (red color) to each well (refer to Section A, Step 3). Seal with tape and incubate the plate for 30 min at 37°C.
- Repeat wash procedure (Section C, Step 4).
- Add 100 µl of TMB Substrate to each well. Seal with tape and incubate the plate for 10 min at 37°C or 30 min at 25°C.
- Add 100 µl of STOP Solution to each well. Shake gently for a few seconds.

**NOTE:** Initial color of positive reaction is blue, which changes to yellow upon addition of STOP Solution.

- Read results.
  - Visual Determination:** Read within 30 min after adding STOP Solution.
  - Spectrophotometric Determination:** Wipe underside of wells with a lint-free tissue. Read absorbance at 450 nm within 30 min after adding STOP Solution.

#### Background References:

- Pullen, N. and Thomas, G. (1997) *FEBS Lett.* 410, 78–82.
- Dufner, A. and Thomas, G. (1999) *Exp. Cell Res.* 253, 100–109.
- Weng, Q.P. et al. (1998) *J. Biol. Chem.* 273, 16621–16629.
- Pullen, N. et al. (1998) *Science* 279, 707–710.
- Alessi, D.R. et al. (1998) *Curr. Biol.* 8, 69–81.
- Polakiewicz, R.D. et al. (1998) *J. Biol. Chem.* 273, 23534–23541.
- Fingar, D.C. et al. (2002) *Genes Dev.* 16, 1472–1487.
- Saitoh, M. et al. (2002) *J. Biol. Chem.* 277, 20104–20112.