

#7050C Store at 4°C

PathScan® Total p44/42 MAPK (Erk1/2) Sandwich ELISA Kit



1 Kit
(96 assays)

Orders ■ 877-616-CELL (2355)
 orders@cellsignal.com
Support ■ 877-678-TECH (8324)
 info@cellsignal.com
Web ■ www.cellsignal.com

rev. 08/04/20

For Research Use Only. Not For Use In Diagnostic Procedures.

Species Cross-Reactivity: H, M

Description: The PathScan® Total p44/42 MAPK (Erk1/2) Sandwich ELISA Kit is a solid phase sandwich enzyme-linked immunosorbent assay (ELISA) that detects endogenous levels of p44/42 MAPK (Erk1/2). A p44/42 MAPK mouse mAb has been coated onto the microwells. After incubation with cell lysates, p44/42 MAPK is captured by the coated antibody. Following extensive washing, a p44/42 MAPK rabbit detection mAb is added to detect the captured p44/42 MAPK protein. Anti-Rabbit IgG, HRP-linked antibody #7074 is then used to recognize the bound detection antibody. HRP substrate, TMB, is added to develop color. The magnitude of absorbance for this developed color is proportional to the quantity of total p44/42 MAPK.

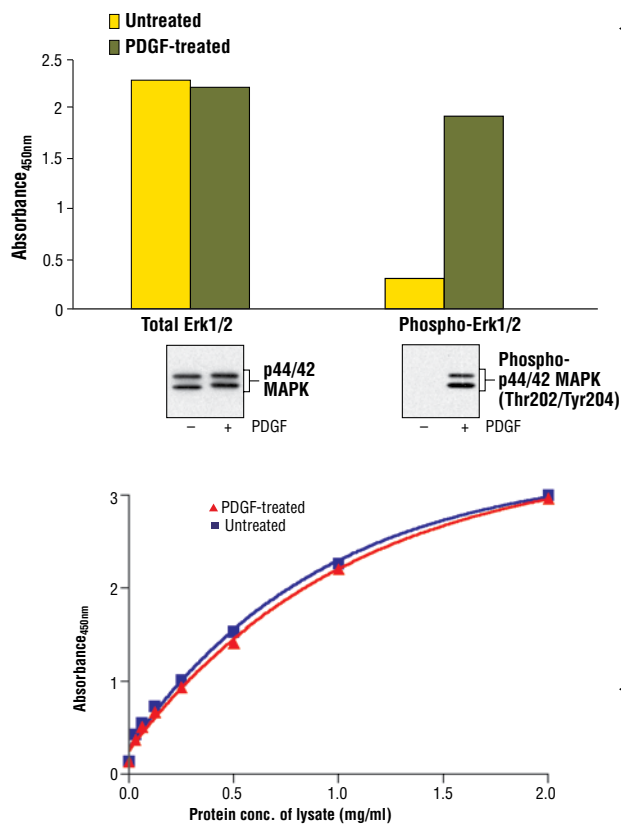
*Antibodies in kit are custom formulations specific to kit.

Specificity/Sensitivity: CST's PathScan® Total p44/42 MAPK (Erk1/2) Sandwich ELISA Kit #7050 detects endogenous levels of total p44/42 MAPK protein (see Figure 1). The kit sensitivity is shown in Figure 2. This kit detects proteins from the indicated species, as determined through in-house testing, but may also detect homologous proteins from other species.

Background: Mitogen-activated protein kinases (MAPKs) are a widely conserved family of serine/threonine protein kinases involved in many cellular programs such as cell proliferation, differentiation, motility, and death. The p44/42 MAPK (Erk1/2) signaling pathway can be activated in response to a diverse range of extracellular stimuli including mitogens, growth factors, and cytokines (1-3) and is an important target in the diagnosis and treatment of cancer (4). Upon stimulation, a sequential three-part protein kinase cascade is initiated, consisting of a MAP kinase kinase kinase (MAPKKK or MAP3K), a MAP kinase kinase (MAPKK or MAP2K), and a MAP kinase (MAPK). Multiple p44/42 MAP3Ks have been identified, including members of the Raf family as well as Mos and Tpl2/Cot. MEK1 and MEK2 are the primary MAPKKs in this pathway (5,6). MEK1 and MEK2 activate p44 and p42 through phosphorylation of activation loop residues Thr202/Tyr204 and Thr185/Tyr187, respectively. Several downstream targets of p44/42 have been identified, including p90RSK (7) and the transcription factor Elk-1 (8,9). p44/42 are negatively regulated by a family of dual-specificity (Thr/Tyr) MAPK phosphatases, known as DUSPs or MKPs (10), along with MEK inhibitors such as U0126 and PD98059.

Product Includes	Item #	Kit Quantity	Color	Storage Temp
p44/42 MAPK (Erk1/2) Mouse mAb Coated Microwells*	33606	96 tests		4°C
p44/42 MAPK (Erk 1/2)Rabbit Detection mAb	13986	1 each	Green (Lyophilized)	4°C
Anti-rabbit IgG, HRP-linked Antibody (ELISA Formulated)	13272	1 each	Red (Lyophilized)	4°C
Detection Ab Diluent	14621	11 ml	Green	4°C
HRP Diluent	13515	11 ml	Red	4°C
TMB Substrate	7004	11 ml		4°C
STOP Solution	7002	11 ml		4°C
Sealing Tape	54503	2 sheets		4°C
ELISA Wash Buffer (20X)	9801	25 ml		4°C
ELISA Sample Diluent	11083	25 ml	Blue	4°C
Cell Lysis Buffer (10X)	9803	15 ml		-20°C

*12 8-well modules – Each module is designed to break apart for 8 tests.



◀ **Figure 1.** Treatment of NIH/3T3 cells with PDGF stimulates phosphorylation of p44/42 MAPK at Thr202/Tyr204, detected by the PathScan® Phospho-p44/42 MAPK (Thr202/Tyr204) Sandwich ELISA Kit #7177, but has little effect on the total level of p44/42 MAPK detected by PathScan® Total p44/42 MAPK (Erk1/2) Sandwich ELISA Kit. NIH/3T3 cells (80-90% confluent) were starved overnight and treated with 100 ng/mL PDGF for 5 minutes at 37°C. The absorbance readings at 450 nm are shown in the top figure, while the corresponding western blots, using p44/42 MAPK (Erk1/2) Antibody #9102 (left panel) and Phospho-p44/42 MAPK (Erk1/2) (Thr202/Tyr204) (D13.14.4E) XP® Rabbit mAb #4370 (right panel), are shown in the bottom figure.

© 2014 Cell Signaling Technology, Inc. XP®, PathScan® and Cell Signaling Technology® are trademarks of Cell Signaling Technology, Inc.

Applications Key: W—Western IP—Immunoprecipitation IHC—Immunohistochemistry ChIP—Chromatin Immunoprecipitation IF—Immunofluorescence F—Flow cytometry E-P—ELISA-Peptide
Species Cross-Reactivity Key: H—human M—mouse R—rat Hm—hamster Mk—monkey Mi—mink C—chicken Dm—D. melanogaster X—Xenopus Z—zebrafish B—bovine
 Dg—dog Pg—pig Sc—S. cerevisiae Ce—C. elegans Hr—Horse All—all species expected Species enclosed in parentheses are predicted to react based on 100% homology.

U.S. Patent No. 5,675,063

PathScan® Sandwich ELISA Protocol (for kits with Lyophilized Antibodies)

A Solutions and Reagents

NOTE: Prepare solutions with purified water.

- Microwell strips:** Bring all to room temperature before use.
- Detection Antibody:** Supplied lyophilized as a green colored cake or powder. Add 1.0 ml of Detection Antibody Diluent 2 (green solution) to yield a concentrated stock solution. Incubate at room temperature for 5 min with occasional gentle mixing to fully reconstitute. To make the final working solution, add the full 1.0 ml volume of reconstituted Detection Antibody to 10.0 ml of Detection Antibody Diluent 2 in a clean tube and gently mix. Unused working solution may be stored for 4 weeks at 4°C.
- HRP-Linked Antibody*:** Supplied lyophilized as a red colored cake or powder. Add 1.0 ml of HRP Diluent (red solution) to yield a concentrated stock solution. Incubate at room temperature for 5 min with occasional gentle mixing to fully reconstitute. To make the final working solution, add the full 1.0 ml volume of reconstituted HRP-Linked Antibody to 10.0 ml of HRP Diluent in a clean tube and gently mix. Unused working solution may be stored for 4 weeks at 4°C.
- Detection Antibody Diluent:** Green colored diluent for reconstitution and dilution of the detection antibody (11 ml provided).
- HRP Diluent:** Red colored diluent for reconstitution and dilution of the HRP-Linked Antibody (11 ml provided).
- Sample Diluent:** Blue colored diluent provided for dilution of cell lysates.
- 1X Wash Buffer:** Prepare by diluting 20X Wash Buffer (included in each PathScan® Sandwich ELISA Kit) in purified water.
- Cell Lysis Buffer:** 10X Cell Lysis Buffer #9803: This buffer can be stored at 4°C for short-term use (1–2 weeks). Recommended: Add 1 mM phenylmethyl-sulfonyl fluoride (PMSF) immediately before use.
- TMB Substrate** (#7004).
- STOP Solution** (#7002).

*Note: Some PathScan® ELISA Kits may include HRP-Linked Streptavidin in place of HRP-Linked Antibody.

B Preparing Cell Lysates

For adherent cells.

- Aspirate media when the culture reaches 80–90% confluence. Treat cells by adding fresh media containing regulator for desired time.
- Remove media and rinse cells once with ice-cold 1X PBS.
- Remove PBS and add 0.5 ml ice-cold 1X Cell Lysis Buffer plus 1 mM PMSF to each plate (10 cm diameter) and incubate the plate on ice for 5 min.
- Scrape cells off the plate and transfer to an appropriate tube. Keep on ice.
- Sonicate lysates on ice.
- Microcentrifuge for 10 min (14,000 rpm) at 4°C and transfer the supernatant to a new tube. The supernatant is the cell lysate. Store at –80°C in single-use aliquots.

For suspension cells

- Remove media by low speed centrifugation (~1200 rpm) when the culture reaches 0.5–1.0 x 10⁶ viable cells/ml. Treat cells by adding fresh media containing regulator for desired time.
- Collect cells by low speed centrifugation (~1200 rpm) and wash once with 5–10 ml ice-cold 1X PBS.
- Cells harvested from 50 ml of growth media can be lysed in 2.0 ml of 1X Cell Lysis Buffer plus 1 mM PMSF.
- Sonicate lysates on ice.
- Microcentrifuge for 10 min (14,000 rpm) at 4°C and transfer the supernatant to a new tube. The supernatant is the cell lysate. Store at –80°C in single-use aliquots.

C Test Procedure

- After the microwell strips have reached room temperature, break off the required number of microwells. Place the microwells in the strip holder. Unused microwells must be resealed and stored at 4°C immediately.
- Cell lysates can be undiluted or diluted with Sample Diluent (supplied in each PathScan® Sandwich ELISA Kit, blue color). Individual datasheets for each kit provide a sensitivity curve that serves as a reference for selection of an appropriate starting lysate concentration. The sensitivity curve shows typical kit assay results across a range of lysate concentration points.
- Add 100 µl of each undiluted or diluted cell lysate to the appropriate well. Seal with tape and press firmly onto top of microwells. Incubate the plate for 2 hr at 37°C. Alternatively, the plate can be incubated overnight at 4°C.
- Gently remove the tape and wash wells:
 - Discard plate contents into a receptacle.
 - Wash 4 times with 1X Wash Buffer, 200 µl each time for each well.
 - For each wash, strike plates on fresh towels hard enough to remove the residual solution in each well, but do not allow wells to completely dry at any time.
 - Clean the underside of all wells with a lint-free tissue.
- Add 100 µl of reconstituted Detection Antibody (green color) to each well (refer to Section A, Step 2). Seal with tape and incubate the plate at 37°C for 1 hr.
- Repeat wash procedure (Section C, Step 4).
- Add 100 µl of reconstituted HRP-Linked secondary antibody (red color) to each well (refer to Section A, Step 3). Seal with tape and incubate the plate for 30 min at 37°C.
- Repeat wash procedure (Section C, Step 4).
- Add 100 µl of TMB Substrate to each well. Seal with tape and incubate the plate for 10 min at 37°C or 30 min at 25°C.
- Add 100 µl of STOP Solution to each well. Shake gently for a few seconds.

NOTE: Initial color of positive reaction is blue, which changes to yellow upon addition of STOP Solution.

- Read results.
 - Visual Determination:** Read within 30 min after adding STOP Solution.
 - Spectrophotometric Determination:** Wipe underside of wells with a lint-free tissue. Read absorbance at 450 nm within 30 min after adding STOP Solution.

Background References:

- (1) Roux, P.P. and Blenis, J. (2004) *Microbiol Mol Biol Rev* 68, 320–44.
- (2) Baccharini, M. (2005) *FEBS Lett* 579, 3271–7.
- (3) Meloche, S. and Pouyssegur, J. (2007) *Oncogene* 26, 3227–39.
- (4) Roberts, P.J. and Der, C.J. (2007) *Oncogene* 26, 3291–310.
- (5) Rubinfeld, H. and Seger, R. (2005) *Mol Biotechnol* 31, 151–74.
- (6) Murphy, L.O. and Blenis, J. (2006) *Trends Biochem Sci* 31, 268–75.
- (7) Dalby, K.N. et al. (1998) *J Biol Chem* 273, 1496–505.
- (8) Marais, R. et al. (1993) *Cell* 73, 381–93.
- (9) Kortenjann, M. et al. (1994) *Mol Cell Biol* 14, 4815–24.
- (10) Owens, D.M. and Keyse, S.M. (2007) *Oncogene* 26, 3203–13.