

Anti-Rabbit IgG F(ab')₂ Fragment (Sephacrose® Bead Conjugate)

✓ 1 ml
(40 immunoprecipitations)



Orders ■ 877-616-CELL (2355)
orders@cellsignal.com
Support ■ 877-678-TECH (8324)
info@cellsignal.com
Web ■ www.cellsignal.com

rev. 02/17/16

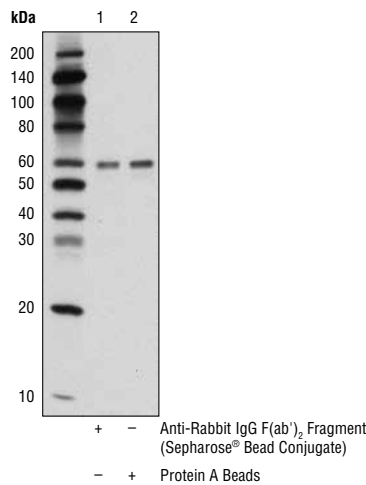
For Research Use Only. Not For Use In Diagnostic Procedures.

Description: This Cell Signaling Technology antibody is immobilized via covalent binding of primary amino groups to N-hydroxysuccinimide (NHS)-activated Sepharose® beads. Anti-Rabbit IgG F(ab')₂ Fragment (Sephacrose® Bead Conjugate) is useful for the immunoprecipitation of antibodies raised in rabbit.

Background: Anti-Rabbit IgG F(ab')₂ Fragment (Sephacrose® Bead Conjugate) is ideal for immunoprecipitation. This secondary antibody will detect rabbit antibodies. Since this secondary antibody is made with F(ab')₂ fragments, non-specific binding through F_c receptors present on cells will be eliminated.

Specificity/Sensitivity: Assay by immunoelectrophoresis resulted in a single precipitin arc against anti-goat serum, Rabbit IgG and Rabbit serum. No reaction was observed against anti-pepsin, anti-goat IgG F_c, or human or mouse serum proteins.

Source/Purification: Anti-Rabbit IgG F(ab')₂ Fragment is produced by immunizing goats with rabbit IgG whole molecules. The Anti-Rabbit IgG F(ab')₂ Fragment is prepared from monospecific antiserum by immunoaffinity chromatography using Rabbit IgG coupled to agarose beads followed by solid phase adsorption to remove any unwanted reactivities, pepsin digestion, and chromatographic separation.



Immunoprecipitation of Jurkat cell extracts using Akt (pan) (C67E7) Rabbit mAb #4691. Extracts were incubated with either Anti-Rabbit IgG F(ab')₂ Fragment (Sephacrose® Bead Conjugate) (lane 1) or Protein A Beads (lane 2). The western blot was probed using Akt (pan) (40D4) Mouse mAb #2920.

Storage: Supplied in 10 mM sodium HEPES (pH 7.5), 150 mM NaCl, 100 µg/ml BSA, 50% glycerol. Store at -20°C. *Do not aliquot the antibody.*

Directions for Use: Add 10-20 µl of well-vortexed beads to 200 µl of cell lysate at 1 mg/ml in 1X Cell Lysis Buffer (10X) #9803. See protocol for more details.

For product specific protocols please see the web page for this product at www.cellsignal.com.

Please visit www.cellsignal.com for a complete listing of recommended companion products.

Sephacrose® is a registered trademark of GE Healthcare.

Applications Key: W—Western IP—Immunoprecipitation IHC—Immunohistochemistry ChIP—Chromatin Immunoprecipitation IF—Immunofluorescence F—Flow cytometry E-P—ELISA—Peptide
Species Cross-Reactivity Key: H—human M—mouse R—rat Hm—hamster Mk—monkey Mi—mink C—chicken Dm—D. melanogaster X—Xenopus Z—zebrafish B—bovine
Dg—dog Pg—pig Sc—S. cerevisiae Ce—C. elegans Hr—horse All—all species expected Species enclosed in parentheses are predicted to react based on 100% homology.