

Store at
-20°C

CD200 (E2K4C) Rabbit mAb



#69858

Support: +1-978-867-2388 (U.S.)
www.cellsignal.com/supportOrders: 877-616-2355 (U.S.)
orders@cellsignal.comEntrez-Gene ID #4345
UniProt ID #P41217

New 01/19

For Research Use Only. Not For Use In Diagnostic Procedures.

Applications W, IP, F Endogenous	Species Cross-Reactivity* H	Molecular Wt. 45-50 kDa	Isotype Rabbit IgG**
--	--------------------------------	----------------------------	-------------------------

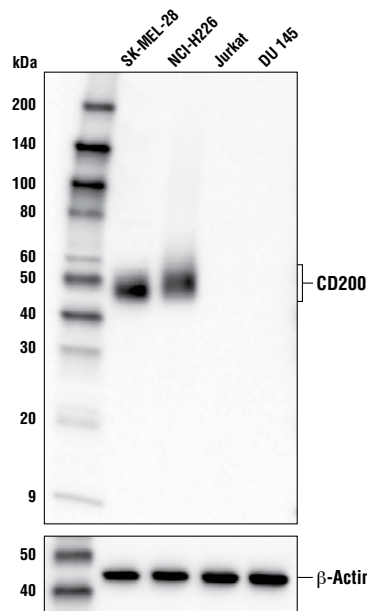
Background: CD200 (OX2) and CD200R (OX2R) are membrane glycoprotein members of the Ig superfamily (1-3). CD200 is expressed by a range of cells, including neurons, epithelial cells, endothelial cells, fibroblasts, and lymphoid cells, while its receptor, CD200R, is found on myeloid and T cells (1-5). Interaction between CD200 and CD200R downregulates macrophage function and plays a role in immunosuppression and regulation of anti-tumor immune responses (3-7).

Background References:

- (1) Barclay, A.N. (1981) *Immunology* 44, 727-36.
- (2) McCaughan, G.W. et al. (1987) *Immunogenetics* 25, 329-35.
- (3) Wright, G.J. et al. (2000) *Immunity* 13, 233-42.
- (4) Hoek, R.M. et al. (2000) *Science* 290, 1768-71.
- (5) Wright, G.J. et al. (2003) *J Immunol* 171, 3034-46.
- (6) Kretz-Rommel, A. et al. (2007) *J Immunol* 178, 5595-605.
- (7) Fallarino, F. et al. (2004) *J Immunol* 173, 3748-54.

Specificity/Sensitivity: CD200 (E2K4C) Rabbit mAb recognizes endogenous levels of total CD200 protein.

Source/Purification: Monoclonal antibody is produced by immunizing animals with human CD200 recombinant protein and reacts with an epitope surrounding Pro189.



Western blot analysis of extracts from various cell lines using CD200 (E2K4C) Rabbit mAb (upper) or β -Actin (D6A8) Rabbit mAb #8457 (lower).

Storage: Supplied in 10 mM sodium HEPES (pH 7.5), 150 mM NaCl, 100 μ g/ml BSA, 50% glycerol and less than 0.02% sodium azide. Store at -20°C . Do not aliquot the antibody.

***Species cross-reactivity is determined by western blot.**
****Anti-rabbit secondary antibodies must be used to detect this antibody.**

Recommended Antibody Dilutions:

Western blotting	1:1000
Immunoprecipitation	1:200
Flow Cytometry	1:50

For product specific protocols and a complete listing of recommended companion products please see the product web page at www.cellsignal.com.

Alexa Fluor is a registered trademark of Life Technologies Corporation.
Tween is a registered trademark of ICI Americas, Inc.

IMPORTANT: For western blots, incubate membrane with diluted antibody in 5% w/v BSA, 1X TBS, 0.1% Tween[®]20 at 4°C with gentle shaking, overnight.

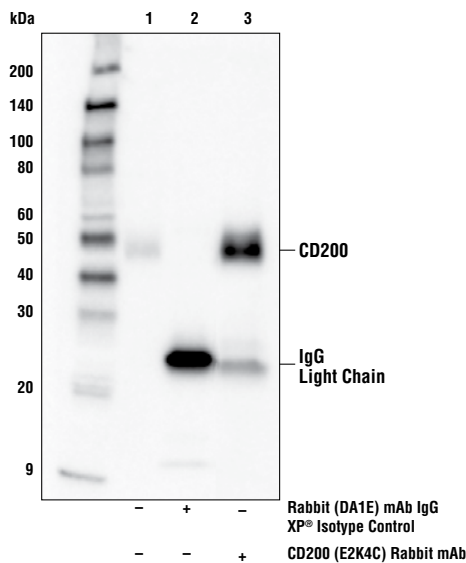
Thank you for your recent purchase. If you would like to provide a review visit cellsignal.com/comments.

www.cellsignal.com

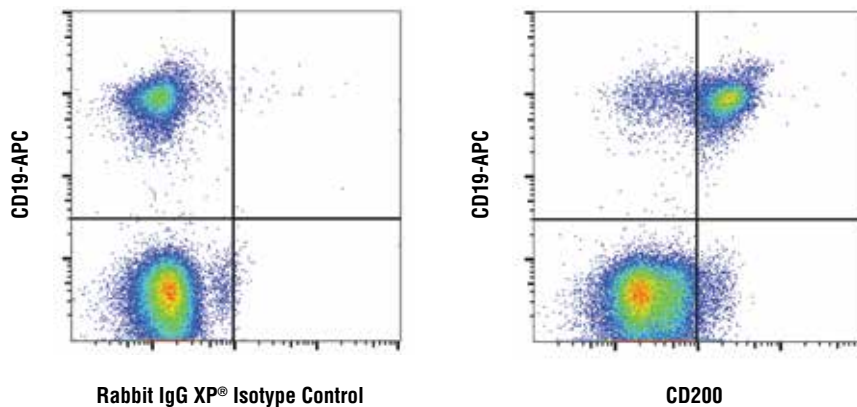
© 2019 Cell Signaling Technology, Inc.

XP and Cell Signaling Technology are trademarks of Cell Signaling Technology, Inc.

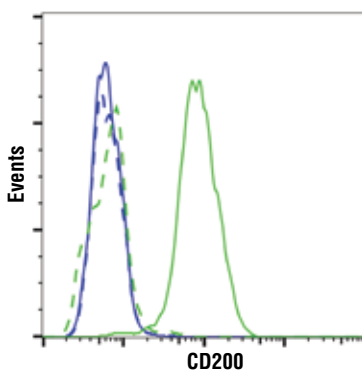
Applications: W—Western IP—Immunoprecipitation IHC—Immunohistochemistry ChIP—Chromatin Immunoprecipitation IF—Immunofluorescence F—Flow cytometry E-P—ELISA-Peptide Species Cross-Reactivity: H—human M—mouse R—rat Hm—hamster Mk—monkey Mi—mink C—chicken Dm—D. melanogaster X—Xenopus Z—zebrafish B—bovine Dg—dog Pg—pig Sc—S. cerevisiae Ce—C. elegans Hr—Horse All—all species expected Species enclosed in parentheses are predicted to react based on 100% homology.



Immunoprecipitation of CD200 from SK-MEL-28 cell extracts. Lane 1 is 10% input, lane 2 is Rabbit (DA1E) mAb IgG XP® Isotype Control #3900, and lane 3 is CD200 (E2K4C) Rabbit mAb. Western blot analysis was performed using CD200 (E2K4C) Rabbit mAb as the primary antibody and Mouse Anti-Rabbit IgG (Light-Chain Specific) (D4W3E) mAb (HRP Conjugate) #93702 as the secondary antibody.



Flow cytometric analysis of live human peripheral blood mononuclear cells, using CD200 (E2K4C) Rabbit mAb and co-stained with CD19 (SJ25C1) Mouse mAb (APC Conjugate) #31943 (right), compared to concentration-matched Rabbit (DA1E) mAb IgG XP® Isotype Control #3900 (left). Anti-rabbit IgG (H+L), F(ab')₂ Fragment (Alexa Fluor® 488 Conjugate) #4412 was used as a secondary antibody. Cells within the lymphocyte gate were used for analysis.



Flow cytometric analysis of DU 145 cells (blue) and SK-MEL-28 cells (green) using CD200 (E2K4C) Rabbit mAb (solid lines) or a concentration-matched Rabbit (DA1E) mAb IgG XP® Isotype Control #3900 (dashed lines). Anti-rabbit IgG (H+L), F(ab')₂ Fragment (Alexa Fluor® 488 Conjugate) #4412 was used as a secondary antibody.

Thank you for your recent purchase. If you would like to provide a review visit [cellsignal.com/comments](https://www.cellsignal.com/comments).

www.cellsignal.com