

Store at
-20°C

Adavosertib

#69589

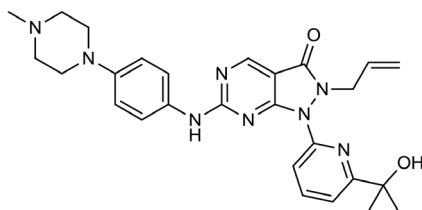
5 mg

Cell Signaling
TECHNOLOGY®Support: +1-978-867-2388 (U.S.)
www.cellsignal.com/supportOrders: 877-616-2355 (U.S.)
orders@cellsignal.com

For Research Use Only. Not For Use In Diagnostic Procedures.

Background: Adavosertib (MK-1775) is a potent, selective Wee1 kinase inhibitor with an IC_{50} value of 5.2 nM. Adavosertib inhibits phosphorylation of the Wee1 substrate Cdc2 at Tyr15, thereby abrogating the G2 DNA damage checkpoint (1). Wee1 inhibition in p53-deficient tumors by Adavosertib has been shown to inhibit and regress tumor growth (2).

Molecular Formula: $C_{27}H_{32}N_8O_2$



Molecular Weight: 500.6 g/mol

Purity: >98%

CAS: 955365-80-7

Solubility: Soluble in DMSO at 70 mg/mL.

Storage: Store lyophilized at -20°C, desiccated. In lyophilized form, the chemical is stable for 24 months. Once in solution, store at -20°C and use within 3 months to prevent loss of potency. *Aliquot to avoid multiple freeze/thaw cycles.*

Directions for Use: Adavosertib is supplied as a lyophilized powder. For a 10 mM stock, reconstitute 5 mg of powder in 999 μ L of DMSO. Working concentrations and length of treatment can vary depending on the desired effect.

Background References:

- (1) Hirai, H. et al. (2009) *Mol Cancer Ther* 8, 2992-3000.
- (2) Guertin, A.D. et al. (2013) *Mol Cancer Ther* 12, 1442-52.

All other trademarks are the property of their respective owners. Visit cellsignal.com/trademarks for more information.

Thank you for your recent purchase. If you would like to provide a review visit cellsignal.com/comments.

www.cellsignal.com

© 2021 Cell Signaling Technology, Inc.
Cell Signaling Technology is a trademark of Cell Signaling Technology, Inc.

Applications: W—Western IP—Immunoprecipitation IHC—Immunohistochemistry ChIP—Chromatin Immunoprecipitation IF—Immunofluorescence F—Flow cytometry E-P—ELISA-Peptide **Species Cross-Reactivity:** H—human M—mouse R—rat Hm—hamster Mk—monkey Mi—mink C—chicken Dm—D. melanogaster X—Xenopus Z—zebrafish B—bovine Dg—dog Pg—pig Sc—S. cerevisiae Ce—C. elegans Hr—Horse All—all species expected Species enclosed in parentheses are predicted to react based on 100% homology.