

Store at
-20°C

COPS6 Antibody

#69477

Cell Signaling
TECHNOLOGY®Support: +1-978-867-2388 (U.S.)
www.cellsignal.com/supportOrders: 877-616-2355 (U.S.)
orders@cellsignal.comEntrez-Gene ID #10980
UniProt ID #Q7L5N1

New 05/18

For Research Use Only. Not For Use In Diagnostic Procedures.

Applications W Endogenous	Species Cross-Reactivity* H, M, R	Molecular Wt. 35 kDa	Source Rabbit**
---------------------------------	--------------------------------------	-------------------------	--------------------

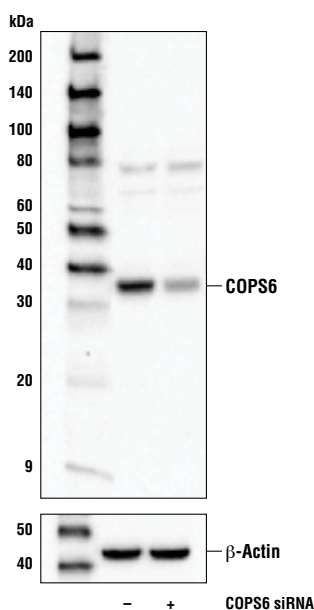
Background: COP9 signalosome complex subunit 6 (COPS6) belongs to the multisubunit COP9 signalosome which modulates protein ubiquitination to affect cellular processes such as cell-cycle progression and DNA damage repair (1). COPS6 is a putative oncogene that has been shown to be overexpressed in a significant percentage of colorectal cancers with poor prognosis (2). Mechanistically, research studies have shown that a signaling axis involving EGFR and ERK promotes tumor growth through the phosphorylation of COPS6, which indirectly facilitates downstream stabilization of β -catenin and enhancement of its transcriptional activity (2). Research studies have also demonstrated that COPS6 contributes to tumorigenesis through the stabilization of other oncoproteins like c-Myc, MDM2 and E6AP (3-5).

Background References:

- (1) Wei, N. and Deng, X.W. (2003) *Annu Rev Cell Dev Biol* 19, 261-86.
- (2) Verwoerd, C.D. et al. (1989) *Rhinol Suppl* 9, 87-96.
- (3) Zhao, R. et al. (2011) *J Clin Invest* 121, 851-65.
- (4) Gao, S. et al. (2015) *Oncotarget* 6, 28026-41.
- (5) Chen, J. et al. (2014) *Nat Commun* 5, 5384.

Specificity/Sensitivity: COPS6 Antibody recognizes endogenous levels of total COPS6 protein. This antibody also cross-reacts with an unidentified protein of 78kDa protein in some cell extracts.

Source/Purification: Polyclonal antibodies are produced by immunizing animals with a synthetic peptide corresponding to residues near the carboxy terminus of human COPS6 protein. Antibodies are purified by protein A and peptide affinity chromatography.



Western blot analysis of extracts from 293T cells, mock transfected (-) or transfected with siRNA targeting human COPS6 (+), using COPS6 Antibody (upper) and β -Actin (D6A8) Rabbit mAb #8457 (lower).

Storage: Supplied in 10 mM sodium HEPES (pH 7.5), 150 mM NaCl, 100 μ g/ml BSA and 50% glycerol. Store at -20°C . Do not aliquot the antibody.

*Species cross-reactivity is determined by western blot.

**Anti-rabbit secondary antibodies must be used to detect this antibody.

Recommended Antibody Dilutions:

Western blotting 1:1000

For product specific protocols and a complete listing of recommended companion products please see the product web page at www.cellsignal.com.

Tween is a registered trademark of ICI Americas, Inc.

IMPORTANT: For western blots, incubate membrane with diluted antibody in 5% w/v BSA, 1X TBS, 0.1% Tween®20 at 4°C with gentle shaking, overnight.

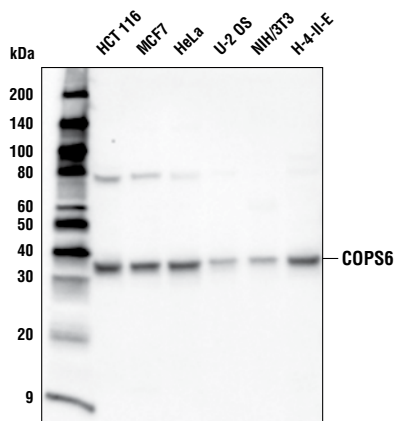
Thank you for your recent purchase. If you would like to provide a review visit cellsignal.com/comments.

www.cellsignal.com

© 2018 Cell Signaling Technology, Inc.

Cell Signaling Technology is a trademark of Cell Signaling Technology, Inc.

Applications: W—Western IP—Immunoprecipitation IHC—Immunohistochemistry ChIP—Chromatin Immunoprecipitation IF—Immunofluorescence F—Flow cytometry E-P—ELISA-Peptide Species Cross-Reactivity: H—human M—mouse R—rat Hm—hamster Mk—monkey Mi—mink C—chicken Dm—D. melanogaster X—Xenopus Z—zebrafish B—bovine Dg—dog Pg—pig Sc—S. cerevisiae Ce—C. elegans Hr—Horse All—all species expected Species enclosed in parentheses are predicted to react based on 100% homology.



Western blot analysis of extracts from various cell lines using COPS6 Antibody.

Thank you for your recent purchase. If you would like to provide a review visit [cellsignal.com/comments](https://www.cellsignal.com/comments).

www.cellsignal.com