

Phospho-Src Family (Tyr416) (D49G4) Rabbit mAb



Orders ■ 877-616-CELL (2355)
orders@cellsignal.com

Support ■ 877-678-TECH (8324)
info@cellsignal.com

Web ■ www.cellsignal.com

rev. 02/16/16

For Research Use Only. Not For Use In Diagnostic Procedures.

Applications
W, IP
Endogenous

Species Cross-Reactivity*
H, M, R, Mk

Molecular Wt.
60 kDa

Isotype
Rabbit IgG**

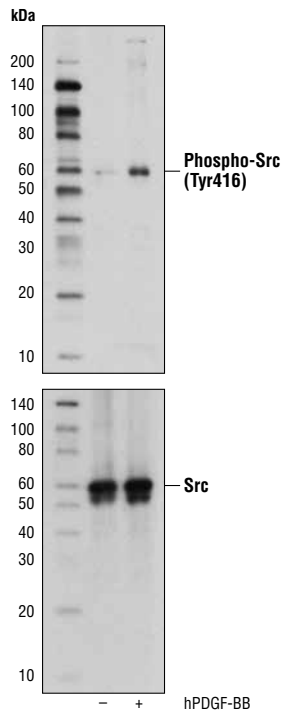
Background: The Src family of protein tyrosine kinases, which includes Src, Lyn, Fyn, Yes, Lck, Blk and Hck, are important in the regulation of growth and differentiation of eukaryotic cells (1). Src activity is regulated by tyrosine phosphorylation at two sites, but with opposing effects. Phosphorylation of Tyr416 in the activation loop of the kinase domain upregulates enzyme activity. Phosphorylation of Tyr527 in the carboxy-terminal tail by Csk renders the enzyme less active (2).

Specificity/Sensitivity: Phospho-Src Family (Tyr416) (D49G4) Rabbit mAb detects endogenous levels of Src only when phosphorylated at Tyr416. The antibody may cross-react with other Src family members (Lyn, Fyn, Lck, Yes and Hck) when phosphorylated at equivalent sites. It may cross react with overexpressed phosphorylated RTKs.

Source/Purification: Monoclonal antibody is produced by immunizing animals with a synthetic phosphopeptide corresponding to residues surrounding Tyr419 of human Src protein.

Background References:

- (1) Thomas, S.M. and Brugge, J.S. (1997) *Annu. Rev. Cell Dev. Biol.* 13, 513-609.
- (2) Hunter, T. (1987) *Cell* 49, 1-4.



Western blot analysis of extracts NIH/3T3 cells, serum-starved or treated with human Platelet-Derived Growth Factor BB hPDGF-BB #8912 (100 ng/ml, 15 min), using Phospho-Src Family (Tyr416) (D49G4) Rabbit mAb (upper) or Src (36D10) Rabbit mAb #2109 (lower).

Entrez-Gene ID #6714
Swiss-Prot Acc. #P12931

Storage: Supplied in 10 mM sodium HEPES (pH 7.5), 150 mM NaCl, 100 µg/ml BSA, 50% glycerol and less than 0.02% sodium azide. Store at -20°C. Do not aliquot the antibody.

***Species cross-reactivity is determined by western blot.**

****Anti-rabbit secondary antibodies must be used to detect this antibody.**

Recommended Antibody Dilutions:

Western blotting 1:1000
Immunoprecipitation 1:100

For product specific protocols and a complete listing of recommended companion products please see the product web page at www.cellsignal.com

IMPORTANT: For western blots, incubate membrane with diluted antibody in 5% w/v BSA, 1X TBS, 0.1% Tween® 20 at 4°C with gentle shaking, overnight.

Tween is a registered trademark of ICI Americas, Inc.

Applications Key: W—Western IP—Immunoprecipitation IHC—Immunohistochemistry ChIP—Chromatin Immunoprecipitation IF—Immunofluorescence F—Flow cytometry E-P—ELISA-Peptide
Species Cross-Reactivity Key: H—human M—mouse R—rat Hm—hamster Mk—monkey Mi—mink C—chicken Dm—D. melanogaster X—Xenopus Z—zebrafish B—bovine
Dg—dog Pg—pig Sc—S. cerevisiae Ce—C. elegans Hr—horse All—all species expected Species enclosed in parentheses are predicted to react based on 100% homology.