

#6923 Store at -20°C

PANK2 Antibody (Mouse Specific)



Orders ■ 877-616-CELL (2355)
orders@cellsignal.com
Support ■ 877-678-TECH (8324)
info@cellsignal.com
Web ■ www.cellsignal.com

rev. 02/16/16

For Research Use Only. Not For Use In Diagnostic Procedures.

Applications W, IP Endogenous	Species Cross-Reactivity* M	Molecular Wt. 49 kDa	Source Rabbit**
-------------------------------------	--------------------------------	-------------------------	--------------------

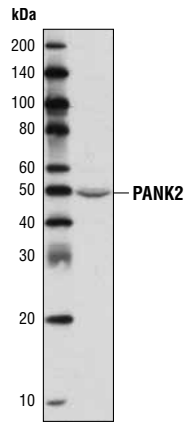
Background: PANK2, pantothenate kinase 2, catalyzes the first step in CoA biosynthesis (1,2). Human PANK2 is located in the mitochondria, and some mutations in human PANK2 are linked to neurodegeneration (2). Alternatively, mouse PANK2 localizes in the cytosol, and defective PANK2 in mice leads to retinal degeneration (1,2).

Specificity/Sensitivity: PANK2 Antibody (Mouse Specific) recognizes endogenous levels of total PANK2 protein.

Source/Purification: Polyclonal antibodies are produced by immunizing animals with a synthetic peptide corresponding to residues near the amino terminus of mouse PANK2 protein. Antibodies are purified by protein A and peptide affinity chromatography.

Background References:

- (1) Leonardi, R. et al. (2007) *FEBS Lett* 581, 4639-44.
- (2) Zhang, Y.M. et al. (2006) *J Biol Chem* 281, 107-14.
- (3) Kuo, Y.M. et al. (2005) *Hum Mol Genet* 14, 49-57.



Western blot analysis of extracts from mouse testis using PANK2 Antibody (Mouse Specific).

Entrez-Gene ID #74450
Swiss-Prot Acc. #Q7M753

Storage: Supplied in 10 mM sodium HEPES (pH 7.5), 150 mM NaCl, 100 µg/ml BSA and 50% glycerol. Store at -20°C. Do not aliquot the antibody.

***Species cross-reactivity is determined by western blot.**

****Anti-rabbit secondary antibodies must be used to detect this antibody.**

Recommended Antibody Dilutions:

Western blotting	1:1000
Immunoprecipitation	1:50

For application specific protocols please see the web page for this product at www.cellsignal.com.

Please visit www.cellsignal.com for a complete listing of recommended companion products.

IMPORTANT: For western blots, incubate membrane with diluted antibody in 5% w/v BSA, 1X TBS, 0.1% Tween-20 at 4°C with gentle shaking, overnight.

© 2011 Cell Signaling Technology, Inc. Cell Signaling Technology® is a trademark of Cell Signaling Technology, Inc.

Applications Key: W—Western IP—Immunoprecipitation IHC—Immunohistochemistry ChIP—Chromatin Immunoprecipitation IF—Immunofluorescence F—Flow cytometry E-P—ELISA-Peptide
Species Cross-Reactivity Key: H—human M—mouse R—rat Hm—hamster Mk—monkey Mi—mink C—chicken Dm—D. melanogaster X—Xenopus Z—zebrafish B—bovine
 Dg—dog Pg—pig Sc—S. cerevisiae Ce—C. elegans Hr—horse All—all species expected Species enclosed in parentheses are predicted to react based on 100% homology.