

T7-Tag Antibody



Orders ■ 877-616-CELL (2355)
orders@cellsignal.com
Support ■ 877-678-TECH (8324)
info@cellsignal.com
Web ■ www.cellsignal.com

rev. 02/16/16

For Research Use Only. Not For Use In Diagnostic Procedures.

Applications W Transfected	Species Cross-Reactivity* All	Source Rabbit**
----------------------------------	----------------------------------	--------------------

Background: Epitope tags are useful for the labeling and detection of proteins using immunoblotting, immunoprecipitation, and immunostaining techniques. Because of their small size, they are unlikely to affect the tagged protein's biochemical properties.

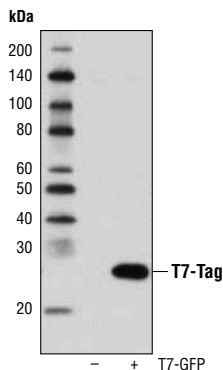
The T7 tag is an epitope tag composed of an 11 residue peptide encoded from the leader sequence of the T7 bacteriophage gene10. The T7 tag has been used extensively as a general epitope tag in many expression vectors including the pET system that is based on T7 RNA polymerase expression systems (1).

Specificity/Sensitivity: T7-Tag Antibody recognizes transfected levels of total T7 protein.

Source/Purification: Polyclonal antibodies are produced by immunizing animals with a synthetic T7 peptide. Antibodies are purified by protein A and peptide affinity chromatography.

Background References:

(1) Studier, F.W. and Moffatt, B.A. (1986) *J Mol Biol* 189, 113-30.



Western blot analysis of extracts from 293T cells, mock transfected (-) or transfected with a construct expressing a T7-GFP fusion protein (T7-GFP; +), using T7-Tag Antibody.

Storage: Supplied in 10 mM sodium HEPES (pH 7.5), 150 mM NaCl, 100 µg/ml BSA and 50% glycerol. Store at -20°C. Do not aliquot the antibody.

***Species cross-reactivity is determined by western blot.**

****Anti-rabbit secondary antibodies must be used to detect this antibody.**

Recommended Antibody Dilutions:

Western blotting 1:1000

For product specific protocols please see the web page for this product at www.cellsignal.com.

Please visit www.cellsignal.com for a complete listing of recommended complementary products.

IMPORTANT: For western blots, incubate membrane with diluted antibody in 5% w/v BSA, 1X TBS, 0.1% Tween-20 at 4°C with gentle shaking, overnight.

Applications Key: W—Western IP—Immunoprecipitation IHC—Immunohistochemistry ChIP—Chromatin Immunoprecipitation IF—Immunofluorescence F—Flow cytometry E-P—ELISA-Peptide
Species Cross-Reactivity Key: H—human M—mouse R—rat Hm—hamster Mk—monkey Mi—mink C—chicken Dm—D. melanogaster X—Xenopus Z—zebrafish B—bovine
Dg—dog Pg—pig Sc—S. cerevisiae Ce—C. elegans Hr—horse All—all species expected Species enclosed in parentheses are predicted to react based on 100% homology.