

Store at  
4°C

# MHC Class II (I-A/I-E) (M5/114.15.2) Rat mAb (PE Conjugate)



Cell Signaling  
TECHNOLOGY®

Support: +1-978-867-2388 (U.S.)  
www.cellsignal.com/support

Orders: 877-616-2355 (U.S.)  
orders@cellsignal.com

Entrez-Gene ID #381091, 14960, 14961, 14969  
UniProt ID #Q3U060, P14435, P06342, P18468

#67762

New 06/18

For Research Use Only. Not For Use In Diagnostic Procedures.

Applications  
F  
Endogenous

Species Cross-Reactivity\*  
M

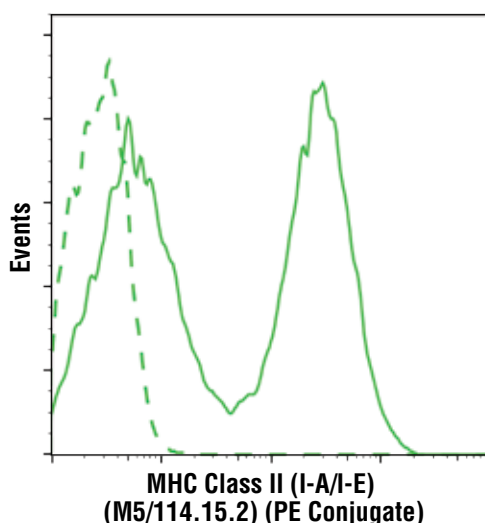
Isotype  
Rat IgG2b, κ

**Description:** This Cell Signaling Technology antibody is conjugated to phycoerythrin (PE) and tested in-house for direct flow cytometry analysis in mouse cells.

**Background:** Major histocompatibility complex class II (MHC class II) molecules are heterodimeric, transmembrane glycoproteins expressed on the surface of antigen-presenting cells such as macrophages, dendritic cells, and B cells. Expression can also be induced on other cell types through interferon- $\gamma$  signaling (1). Prior to being displayed on the cell membrane, MHC class II molecules are loaded with exogenous peptide antigens approximately 15-24 amino acids in length that were derived from endocytosed extracellular proteins digested in the lysosome (2). Antigen-presentation through MHC class II is required for T cell activation during the immune response to extracellular pathogens (2). In humans, the MHC class II protein complex is encoded by the human leukocyte antigen gene complex (HLA). HLAs corresponding to MHC class II are HLA-DP, HLA-DM, HLA-DOA, HLA-DOB, HLA-DQ, and HLA-DR (3)

**Specificity/Sensitivity:** MHC Class II (I-A/I-E) (M5/114.15.2) Rat mAb (PE Conjugate) recognizes endogenous levels of total MHC class II (I-A/I-E) proteins. This antibody detects epitopes within the extracellular domain of MHC class II (I-A/I-E).

**Source/Purification:** This monoclonal antibody was purified from tissue culture supernatant via affinity chromatography. The purified antibody was conjugated under optimal conditions, with unreacted dye removed from the preparation.



Flow cytometric analysis of live mouse splenocytes using MHC Class II (I-A/I-E) (M5/114.15.2) Rat mAb (PE Conjugate) (solid line) compared to concentration-matched Rat (LTF-2) mAb IgG2b Isotype Control (PE Conjugate) #27426 (dashed line).

**Storage:** Supplied in 10 mM NaH<sub>2</sub>PO<sub>4</sub>, 150 mM NaCl, 0.09% Na<sub>2</sub>S<sub>2</sub>O<sub>3</sub>, 0.1% gelatin, pH 7.2. This product is stable for 6 months when stored at 4°C. Do not aliquot the antibody. Protect from light. Do not freeze.

**Recommended Antibody Dilutions:**

Flow Cytometry 1:300

For product specific protocols and a complete listing of recommended companion products please see the product web page at [www.cellsignal.com](http://www.cellsignal.com).

**Background References:**

- (1) Ting, J.P. and Trowsdale, J. (2002) *Cell* 109 Suppl, S21-33.
- (2) Cresswell, P. (1994) *Annu Rev Immunol* 12, 259-93.
- (3) Karp, D.R. et al. (1990) *J Exp Med* 171, 615-28.

Thank you for your recent purchase. If you would like to provide a review visit [cellsignal.com/comments](http://cellsignal.com/comments).

[www.cellsignal.com](http://www.cellsignal.com)

© 2018 Cell Signaling Technology, Inc.

Cell Signaling Technology is a trademark of Cell Signaling Technology, Inc.

Applications: W—Western IP—Immunoprecipitation IHC—Immunohistochemistry ChIP—Chromatin Immunoprecipitation IF—Immunofluorescence F—Flow cytometry E-P—ELISA-Peptide Species Cross-Reactivity: H—human M—mouse R—rat Hm—hamster Mk—monkey Mi—mink C—chicken Dm—D. melanogaster X—Xenopus Z—zebrafish B—bovine Dg—dog Pg—pig Sc—S. cerevisiae Ce—C. elegans Hr—Horse All—all species expected Species enclosed in parentheses are predicted to react based on 100% homology.