

Store at
4°C

PathScan® Phospho-Tau (Thr217) Sandwich ELISA Kit



#59672

1 Kit
(96 assays)Support: +1-978-867-2388 (U.S.)
www.cellsignal.com/supportOrders: 877-616-2355 (U.S.)
orders@cellsignal.comEntrez-Gene ID #4137
UniProt ID #P10636-8

New 02/21

For Research Use Only. Not For Use In Diagnostic Procedures.

Species Cross-Reactivity: H, M, R

Description: The PathScan® Phospho-Tau (Thr217) Sandwich ELISA Kit is a solid phase sandwich enzyme-linked immunosorbent assay (ELISA) that detects endogenous levels of tau protein phosphorylated at Thr217. Incubation of cell lysates and detection antibody on the coated microwell plate forms a sandwich with tau protein phosphorylated at Thr217 in a single step. The plate is then extensively washed and TMB reagent is added for signal development. The magnitude of absorbance for the developed color is proportional to the quantity of tau protein phosphorylated at Thr217.

*Antibodies in this kit are custom formulations specific to kit.

Specificity/Sensitivity: The PathScan® Phospho-Tau (Thr217) Sandwich ELISA Kit detects endogenous levels of tau protein phosphorylated at Thr217. The kit sensitivity is shown in Figures 1 and 2. This kit detects proteins from the indicated species, as determined through in-house testing, but may also detect homologous proteins from other species.

Background: Tau is a heterogeneous microtubule-associated protein that promotes and stabilizes microtubule assembly, especially in axons. Six isoforms with different amino-terminal inserts and different numbers of tandem repeats near the carboxy terminus have been identified, and tau is hyperphosphorylated at approximately 25 sites by Erk, GSK-3, and CDK5 (1,2). Phosphorylation decreases the ability of tau to bind to microtubules. Neurofibrillary tangles are a major hallmark of Alzheimer's disease; these tangles are bundles of paired helical filaments composed of hyperphosphorylated tau. In particular, phosphorylation at Ser396 by GSK-3 or CDK5 destabilizes microtubules. Furthermore, research studies have shown that inclusions of tau are found in a number of other neurodegenerative diseases, collectively known as tauopathies (1,3).

Background References:

- (1) Johnson, G.V. and Stoothoff, W.H. (2004) *J Cell Sci* 117, 5721-9.
- (2) Hanger, D.P. et al. (1998) *J Neurochem* 71, 2465-76.
- (3) Bramblett, G.T. et al. (1993) *Neuron* 10, 1089-99.

Product Includes	Item #	Kit Quantity	Color	Storage Temp
Tau Rabbit mAb Coated Microwells*	75701	96 tests		4°C
Phospho-Tau (Thr217) Rabbit Detection Antibody	67369	1 each	Red (Lyophilized)	4°C
HRP Diluent	13515	5.5 ml	Red	4°C
TMB Substrate	7004	11 ml		4°C
STOP Solution	7002	11 ml		4°C
Sealing Tape	54503	2 each		4°C
ELISA Wash Buffer (20X)	9801	25 ml		4°C
Cell Lysis Buffer (10X)	9803	15 ml		-20°C

*12 8-well modules – Each module is designed to break apart for 8 tests.

**Kit should be stored at 4°C with the exception of 10X Cell Lysis Buffer, which is stored at -20°C (packaged separately).

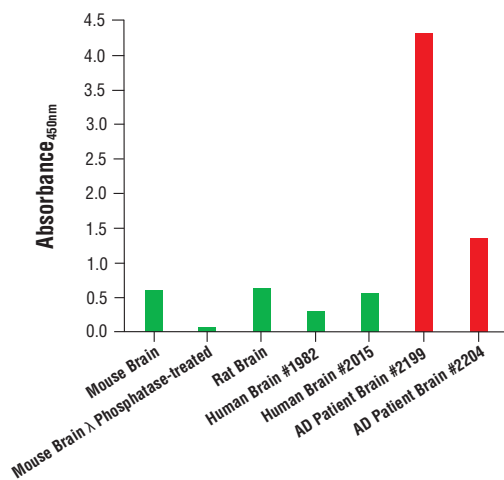


Figure 1. The PathScan® Phospho-Tau (Thr217) Sandwich ELISA Kit #59672 detects phosphorylation of tau at Thr217 in mouse brain, rat brain, human brain, and Alzheimer's Disease (AD) patient brain extracts, but not in λ phosphatase-treated extract. The absorbance at 450 nm for a panel of brain tissue extracts (0.05 mg/ml for each sample) is shown in the figure.

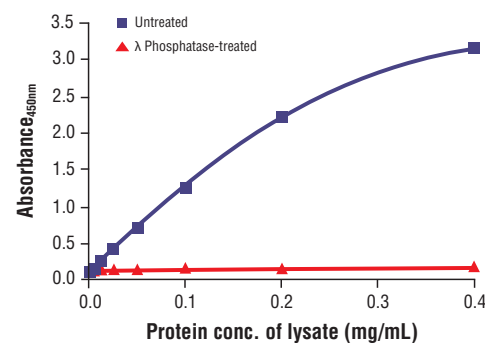


Figure 2. Tau is phosphorylated at Thr217 in untreated mouse brain extracts, but not in λ phosphatase-treated mouse brain extracts. The relationship between lysate protein concentration from untreated and λ phosphatase-treated mouse brain extracts and the absorbance at 450 nm using the PathScan® Phospho-Tau (Thr217) Sandwich ELISA Kit #59672 is shown in the figure. Mouse brain tissues were lysed and then either left untreated or treated with λ phosphatase.

Thank you for your recent purchase. If you would like to provide a review visit cellsignal.com/comments.

www.cellsignal.com

© 2021 Cell Signaling Technology, Inc.

PathScan and Cell Signaling Technology are trademarks of Cell Signaling Technology, Inc.

Applications: W—Western IP—Immunoprecipitation IHC—Immunohistochemistry ChIP—Chromatin Immunoprecipitation IF—Immunofluorescence F—Flow cytometry E-P—ELISA-Peptide Species Cross-Reactivity: H—human M—mouse R—rat Hm—hamster Mk—monkey Mi—mink C—chicken Dm—D. melanogaster X—Xenopus Z—zebrafish B—bovine Dg—dog Pg—pig Sc—S. cerevisiae Ce—C. elegans Hr—Horse All—all species expected Species enclosed in parentheses are predicted to react based on 100% homology.

PathScan® Sandwich ELISA Protocol (One-Step Test Procedure)

NOTE: This protocol is for PathScan® kits that use an HRP directly conjugated to the detection antibody (**1-step method**), rather than a 2-step method where the detection antibody and a secondary-HRP are added sequentially.

Refer to product-specific datasheets for assay incubation temperature.

A Solutions and Reagents

NOTE: Prepare solutions with deionized/purified water or equivalent.

- Microwell strips:** Bring all to room temperature before opening bag/use. Unused microwell strips should be returned to the original re-sealable bag containing the desiccant pack and stored at 4°C.
- Detection Antibody:** Reconstitute lyophilized Detection Antibody (red colored cake) with 5.5 mL HRP Diluent. Incubate at room temperature for 5 min with occasional gentle mixing to fully reconstitute. For best results, use immediately following antibody reconstitution. Unused reconstituted Detection Antibody may be stored for up to 4 weeks at 4°C, although there may be some loss of signal compared to freshly reconstituted antibody.
- HRP Diluent:** Red colored diluent for reconstitution and dilution of the Detection Antibody that is linked to HRP.
- 1X ELISA Wash Buffer:** Prepare by diluting ELISA Wash Buffer (20X) (included in each kit) to 1X with deionized water.
- 1X Cell Lysis Buffer:** Prepare by diluting 10X Cell Lysis Buffer #9803 to 1X with deionized water. This buffer can be stored at 4°C for short-term use (1–2 weeks). Recommended: When using to prepare cell lysates, add Protease/Phosphatase Inhibitor Cocktail (#5872, not supplied) and 1 mM phenylmethyl-sulfonyl fluoride (PMSF, #8553, not supplied) immediately before use.
- TMB Substrate (#7004):** Bring to room temperature before use.
- STOP Solution (#7002):** Bring to room temperature before use.

B Preparing Cell Lysates

For adherent cells

- Aspirate media when the culture reaches 80–90% confluence. Treat cells by adding fresh media containing regulator for desired time.
- Remove media and rinse cells once with ice-cold 1X PBS.
- Remove PBS and add 0.5 mL ice-cold 1X Cell Lysis Buffer including 1 mM PMSF and Protease/Phosphatase Inhibitor Cocktail to each plate (10 cm diameter) and incubate the plate on ice for 5 min.
- Scrape cells off the plate and transfer to an appropriate tube. Keep on ice.
- Sonicate lysates on ice.
- Microcentrifuge for 10 min (14,000 rpm) at 4°C and transfer the supernatant to a new tube. The supernatant is the cell lysate. Store at –80°C in single-use aliquots.

For suspension cells

- Remove media by low speed centrifugation (~1200 rpm) when the culture reaches 0.5–1.0 x 10⁶ viable cells/mL. Treat cells by adding fresh media containing regulator for desired time.
- Collect cells by low speed centrifugation (~1200 rpm) and wash once with 5–10 mL ice-cold 1X PBS.
- Cells harvested from 50 mL of growth media can be lysed in 2.0 mL of 1X Cell Lysis Buffer including 1 mM PMSF and Protease/Phosphatase Inhibitor Cocktail.
- Sonicate lysates on ice.
- Microcentrifuge for 10 min (14,000 rpm) at 4°C and transfer the supernatant to a new tube. The supernatant is the cell lysate. Store at –80°C in single-use aliquots.

C Test Procedure

NOTE: Equilibrate all materials and prepared reagents to room temperature prior to running the assay.

- Prepare all reagents as indicated above (Section A).
- Samples should be undiluted or diluted with 1X Cell Lysis Buffer to a 2X protein concentration in order to achieve a final 1X protein concentration upon addition of the Detection Antibody. Individual datasheets for each kit provide a sensitivity curve that serves as a reference for selection of an appropriate starting lysate concentration. The sensitivity curve shows typical results across a range of lysate concentration points.
- Add 50 µL of each sample to the appropriate wells.
- Add 50 µL of the Detection Antibody to each well.
- Seal the plate and incubate for 1 hour at room temperature on a plate shaker set to 400 rpm (moderate agitation).
- Gently remove the tape and wash wells:
 - Discard plate contents into a receptacle.
 - Wash 4 times with 1X Wash Buffer, 200 µL each time for each well.
 - For each wash, strike plates on fresh towels hard enough to remove the residual solution in each well, but do not allow wells to completely dry at any time.
 - Clean the underside of all wells with a lint-free tissue.
- Add 100 µL of TMB Substrate to each well. Seal with tape and incubate the plate in the dark for 15 min at room temperature on a plate shaker (400 rpm, moderate agitation) or alternatively for 10 min at 37°C without shaking.
- Add 100 µL of STOP Solution to each well. Shake gently for a few seconds.

NOTE: Initial color of positive reaction is blue, which changes to yellow upon addition of STOP Solution.
- Read results:
 - Visual Determination:** Read within 30 min after adding STOP Solution.
 - Spectrophotometric Determination:** Wipe underside of wells with a lint-free tissue. Read absorbance at 450 nm within 30 min after adding STOP Solution.