

DYKDDDDK Tag (9A3) Mouse mAb (Binds to same epitope as Sigma's Anti-FLAG® M2 Antibody) (Sepharose® Bead Conjugate)



Orders ■ 877-616-CELL (2355)
orders@cellsignal.com

Support ■ 877-678-TECH (8324)
info@cellsignal.com

Web ■ www.cellsignal.com

rev. 02/04/16

For Research Use Only. Not For Use In Diagnostic Procedures.

Applications IP Transfected	Species Cross-Reactivity All	Isotype Mouse IgG1
-----------------------------------	---------------------------------	-----------------------

Description: This Cell Signaling Technology antibody is immobilized via covalent binding of primary amino groups to N-hydroxysuccinimide (NHS)-activated Sepharose® beads. DYKDDDDK Tag (9A3) Mouse mAb (Binds to same epitope as Sigma's Anti-FLAG® M2 Antibody) (Sepharose® Bead Conjugate) is useful for the immunoprecipitation of DYKDDDDK (Flag) tagged proteins.

Background: Epitope tags are useful for the labeling and detection of proteins using immunoblotting, immunoprecipitation, and immunostaining techniques. Because of their small size, they are unlikely to affect the tagged protein's biochemical properties.

The DYKDDDDK peptide has been used extensively as a general epitope tag in expression vectors. This peptide can be expressed and detected with the protein of interest as an amino-terminal or carboxy-terminal fusion (1).

Specificity/Sensitivity: DYKDDDDK Tag (9A3) Mouse mAb (Binds to same epitope as Sigma's Anti-FLAG® M2 Antibody) (Sepharose® Bead Conjugate) detects exogenously expressed DYKDDDDK proteins in cells. The antibody recognizes the DYKDDDDK peptide, which is the same epitope recognized by Sigma's Anti-FLAG® antibodies.

Source/Purification: Monoclonal antibody is produced by immunizing animals with a synthetic DYKDDDDK peptide.

Background References:

(1) Brizzard, B.L. et al. (1994) *Biotechniques* 16, 730-5.

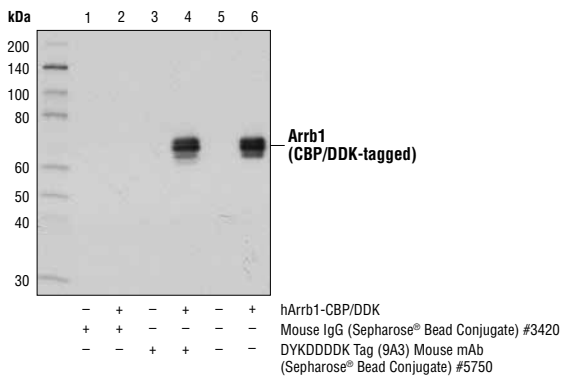
Storage: Supplied in 10 mM sodium HEPES (pH 7.5), 150 mM NaCl, 100 µg/ml BSA, 50% glycerol. Store at -20°C. *Do not aliquot the antibody.*

Recommended Antibody Dilutions:

Immunoprecipitation 1:20

For product specific protocols please see the web page for this product at www.cellsignal.com.

Please visit www.cellsignal.com for a complete listing of recommended companion products.



Immunoprecipitation of extracts from COS-7 cells, mock transfected (lanes 1, 3, and 5; -) or transfected with a construct expressing CBP/DDK-tagged full-length human Arrb1 (hArrb1-CBP/DDK; lanes 2, 4, and 6; +), using Mouse IgG (Sepharose® Bead Conjugate) #3420 (lanes 1 and 2) or DYKDDDDK Tag (9A3) Mouse mAb (Binds to same epitope as Sigma's Anti-FLAG® M2 Antibody) (Sepharose® Bead Conjugate) (lanes 3 and 4). Lanes 5 and 6 are 10% input. Western blot analysis was performed using DYKDDDDK Tag Antibody (HRP Conjugate) #2044.

Anti-FLAG® is a registered trademark of Sigma-Aldrich.
Sepharose® is a registered trademark of GE Healthcare.