

Rabbit (DA1E) mAb IgG XP[®] Isotype Control (PE Conjugate)



Orders ■ 877-616-CELL (2355)
orders@cellsignal.com

Support ■ 877-678-TECH (8324)
info@cellsignal.com

Web ■ www.cellsignal.com

rev. 02/04/16

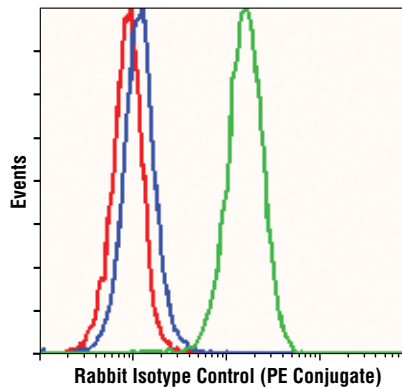
For Research Use Only. Not For Use In Diagnostic Procedures.

Applications	Isotype	Concentration
F	Rabbit IgG	100 µg/ml

Description: This Cell Signaling Technology antibody is conjugated to phycoerythrin (PE) and tested in-house for direct flow cytometry analysis in human cells.

Background: Isotype control antibodies are used to estimate the non-specific binding of target primary antibodies due to F_c receptor binding or other protein-protein interactions. An isotype control antibody should have the same immunoglobulin type and be used at the same concentration as the test antibody.

Specificity/Sensitivity: Rabbit (DA1E) mAb IgG XP[®] Isotype Control (PE conjugate) is not directed against any known antigen. It functions as an isotype control for rabbit IgG monoclonal antibodies.



Flow cytometric analysis of Jurkat cells, untreated (green) or treated with LY294002 (PI3 Kinase Inhibitor) #9901, Wortmannin (PI3 Kinase Inhibitor) #9551 and U0126 (MEK1/2 Inhibitor) #9903 (blue), using Phospho-Akt (Ser473) (D9E) XP[®] Rabbit mAb (PE Conjugate) #5315 compared to concentration matched Rabbit (DA1E) mAb IgG XP[®] Isotype Control (PE Conjugate) (red).

Supplied in PBS (pH 7.2), less than 0.1% sodium azide and 2mg/ml BSA. Store at 4°C. *Protect from light. Do not freeze.*

***Species cross-reactivity other than human is determined by western blot using the unconjugated antibody.**

Important! Dilute this control antibody to the same concentration (not dilution) as the specific antibody used for analysis. Higher background may result if excessive amounts of rabbit IgG isotype control is used.

For application specific protocols please see the web page for this product at www.cellsignal.com.

Please visit www.cellsignal.com for a complete listing of recommended companion products.