

# ApoM (8F12) Mouse mAb



**Orders** ■ 877-616-CELL (2355)  
orders@cellsignal.com  
**Support** ■ 877-678-TECH (8324)  
info@cellsignal.com  
**Web** ■ www.cellsignal.com

rev. 02/04/16

**For Research Use Only. Not For Use In Diagnostic Procedures.**

Applications W, IP Endogenous	Species Cross-Reactivity* H, (M, R)	Molecular Wt. 21, 25 kDa	Isotype Mouse IgG2a**
-------------------------------------	--	-----------------------------	--------------------------

**Background:** Apolipoproteins are plasma lipoproteins that function as transporters of lipids and cholesterol in the circulatory system. Chylomicrons are a fundamental class of apolipoproteins containing very low-density lipoproteins (VLDL), intermediate-density lipoproteins (IDL), low-density lipoproteins (LDL), and high-density lipoproteins (HDL) (1,2).

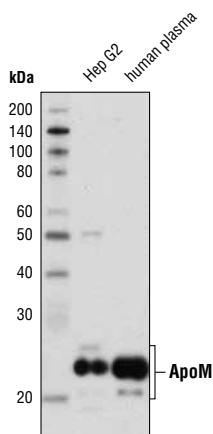
Apolipoprotein M (ApoM) is a novel membrane bound apolipoprotein involved in lipid transport. ApoM primarily interacts with HDL and regulates its metabolism (3). ApoM is highly expressed in hepatocytes and kidney proximal tubule cells. Recently, ApoM was shown to act as a vasculo-protective constituent of HDL by delivering S1P to the S1P receptor on endothelial cells (4). SNPs of ApoM have been associated with type 2 diabetes (5).

**Specificity/Sensitivity:** ApoM (8F12) Mouse mAb recognizes endogenous levels of both unglycosylated and glycosylated ApoM protein.

**Source/Purification:** Monoclonal antibody is produced by immunizing animals with a purified recombinant fragment of human ApoM protein.

**Background References:**

- (1) Kwiterovich, P.O. (2000) *Am J Cardiol* 86, 5L-10L.
- (2) Hussain, M.M. (2000) *Atherosclerosis* 148, 1-15.
- (3) Xu, N. and Dahlback, B. (1999) *J Biol Chem* 274, 31286-90.
- (4) Christoffersen, C. et al. (2011) *Proc Natl Acad Sci USA* 108, 9613-8.
- (5) Zhou, J.W. et al. (2011) *PLoS One* 6, e17324.



Western blot analysis of Hep G2 cell extracts and human plasma using ApoM (8F12) Mouse mAb.

Entrez-Gene ID #55937  
Swiss-Prot Acc. #095445

**Storage:** Supplied in 10 mM sodium HEPES (pH 7.5), 150 mM NaCl, 100 µg/ml BSA, 50% glycerol and less than 0.02% sodium azide. Store at -20°C. Do not aliquot the antibody.

**\*Species cross-reactivity is determined by western blot.**

**\*\*Anti-mouse secondary antibodies must be used to detect this antibody.**

**Recommended Antibody Dilutions:**

Western blotting	1:1000
Immunoprecipitation	1:50

**For application specific protocols please see the web page for this product at [www.cellsignal.com](http://www.cellsignal.com).**

**Please visit [www.cellsignal.com](http://www.cellsignal.com) for a complete listing of recommended companion products.**

**IMPORTANT:** For western blots, incubate membrane with diluted antibody in 5% w/v BSA, 1X TBS, 0.1% Tween-20 at 4°C with gentle shaking, overnight.