

SimpleChIP® Plus Sonication Chromatin IP Kit



#56383

1 Kit (24 immunoprecipitations)

Support: +1-978-867-2388 (U.S.)
www.cellsignal.com/support

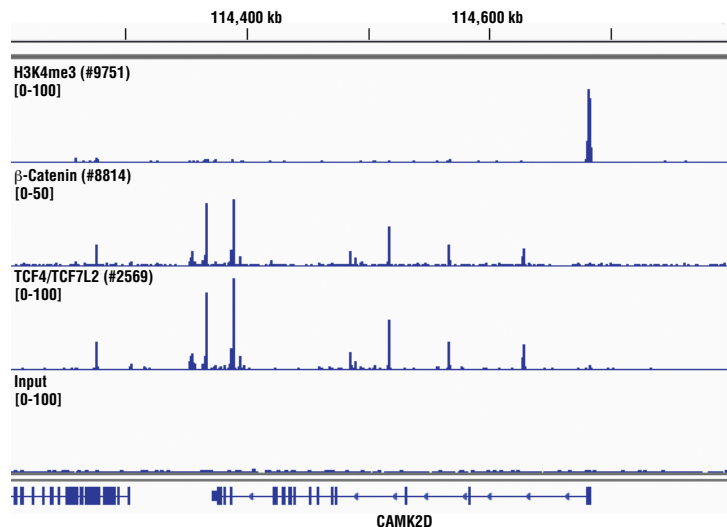
Orders: 877-616-2355 (U.S.)
orders@cellsignal.com

rev. 09/22/20

For Research Use Only. Not For Use In Diagnostic Procedures.

Components Ship As: 57976S	Item #	Kit Quantity	Storage Temp
Glycine Solution (10X)	7005	100 ml	4°C
ChIP Sonication Cell Lysis Buffer (2X)	96529	21 ml	4°C
ChIP Sonication Nuclear Lysis Buffer	28778	21 ml	4°C
ChIP Buffer (10X)	7008	20 ml	4°C
ChIP Elution Buffer (2X)	7009	2.5 ml	4°C
5 M NaCl	7010	3 ml	4°C
ChIP-Grade Protein G Magnetic Beads	9006	780 µl	4°C
DNA Binding Buffer	10007	30 ml	Room Temp
DNA Wash Buffer (add 4x volume ethanol before use)	10008	6 ml	Room Temp
DNA Elution Buffer	10009	2 x 1 ml	Room Temp
DNA Purification Columns and Collection Tubes	10010	30 pack	Room Temp

Components Ship As: 76155S	Item #	Kit Quantity	Storage Temp
Protease Inhibitor Cocktail (200X)	7012	750 µl	-20°C
RNase A (10 mg/ml)	7013	50 µl	-20°C
Proteinase K (20 mg/ml)	10012	100 µl	-20°C
SimpleChIP® Human RPL30 Exon 3 Primers 1	7014	150 µl	-20°C
SimpleChIP® Mouse RPL30 Intron 2 Primers 1	7015	150 µl	-20°C
Histone H3 (D2B12) XP® Rabbit mAb (ChIP Formulated)	4620	100 µl	-20°C
Normal Rabbit IgG	2729	50 µl	-20°C



Storage: All components in this kit are stable for at least 12 months past the reference date indicated on the component label when stored at the recommended temperature and left unused.

Reagents not supplied:

1. Magnetic Separation Rack #7017/#14654
2. Phosphate Buffered Saline (PBS-1X) pH7.2 (Sterile) #9872
3. Nuclease Free Water #12931
4. Ethanol (96-100%)
5. Formaldehyde (37% Stock)
6. SimpleChIP® Universal qPCR Master Mix #88989

Description: The SimpleChIP® Plus Sonication Chromatin IP Kit contains the buffers and reagents necessary to perform up to 24 chromatin immunoprecipitations from cells or tissue samples, and is optimized for 4 X 10⁶ cells or 25 mg of tissue per immunoprecipitation. A complete assay can be performed in as little as two days and can easily be scaled up or down for use with more or less cells or tissue sample. This kit is compatible with both ChIP-qPCR and ChIP-seq.

Specificity/Sensitivity: The SimpleChIP® Plus Sonication Chromatin IP Kit can be utilized with ChIP-validated antibodies to detect endogenous levels of protein-DNA interactions and histone modifications in mammalian cells and tissue samples (see Figures 1 to 6). The cell and nuclear lysis buffers for this kit have been optimized to maximize enrichment of chromatin containing histones, transcription factors and cofactors. The positive control Histone H3 Antibody recognizes many different species of the highly conserved Histone H3 protein, including human, mouse, rat and monkey. Primer sets are included for the human and mouse positive control RPL30 gene loci; however, the use of other species with the kit requires the design of additional control primer sets.

ILLUMINA is a registered trademark of Illumina, Inc.

FIGURE 1. Chromatin immunoprecipitations were performed with cross-linked chromatin from HCT 116 cells and either Tri-Methyl-Histone H3 (Lys4) (C42D8) Rabbit mAb #9751, Non-phospho (Active) β-Catenin (Ser33/37/Thr41) (D13A1) Rabbit mAb #8814, or TCF4/TCF7L2 (C48H11) Rabbit mAb #2569 using SimpleChIP® Plus Sonication Chromatin IP Kit #56383. DNA Libraries were prepared using SimpleChIP® ChIP-seq DNA Library Prep Kit for Illumina® #56795. The figure shows binding across CAMK2D, a known target gene of H3K4me3, TCF4/TCF7L2, and β-Catenin.

Thank you for your recent purchase. If you would like to provide a review visit cellsignal.com/comments.

www.cellsignal.com

© 2017 Cell Signaling Technology, Inc.

SimpleChIP, XP, and Cell Signaling Technology are trademarks of Cell Signaling Technology, Inc.

Applications: W—Western IP—Immunoprecipitation IHC—Immunohistochemistry ChIP—Chromatin Immunoprecipitation IF—Immunofluorescence F—Flow cytometry E-P—ELISA-Peptide Species Cross-Reactivity: H—human M—mouse R—rat Hm—hamster Mk—monkey Mi—mink C—chicken Dm—D. melanogaster X—Xenopus Z—zebrafish B—bovine Dg—dog Pg—pig Sc—S. cerevisiae Ce—C. elegans Hr—Horse All—all species expected Species enclosed in parentheses are predicted to react based on 100% homology.

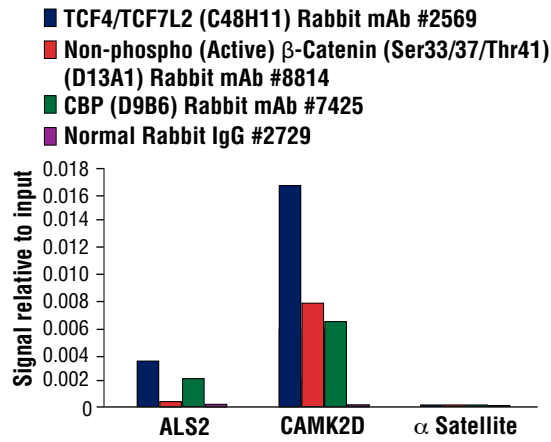


FIGURE 2. Chromatin immunoprecipitations were performed with cross-linked chromatin from HCT 116 cells and either TCF4/TCF7L2 (C48H11) Rabbit mAb #2569, Non-phospho (Active) β -Catenin (Ser33/37/Thr41) (D13A1) Rabbit mAb #8814, CBP (D9B6) Rabbit mAb #7425, or Normal Rabbit IgG #2729 using SimpleChIP[®] Plus Sonication Chromatin IP Kit #56383. The enriched DNA was quantified by real-time PCR using human ALS2 exon 1 primers, SimpleChIP[®] Human CaMK2D Intron 3 Primers #5111, and SimpleChIP[®] Human α Satellite Repeat Primers #4486. The amount of immunoprecipitated DNA in each sample is represented as signal relative to the total amount of input chromatin, which is equivalent to one.

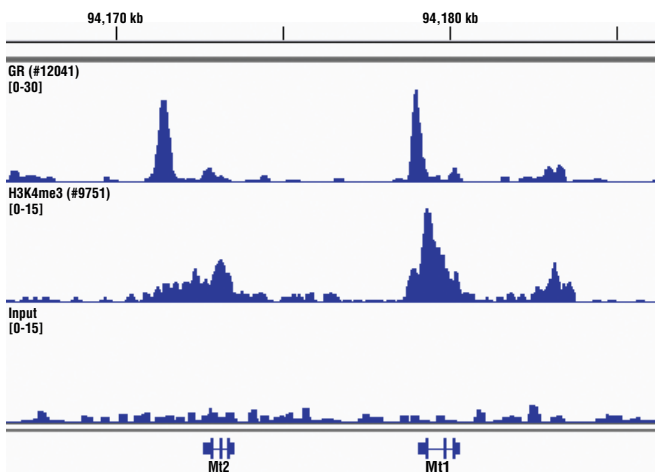


FIGURE 3. Mouse liver was cross-linked for 10 min and disaggregated into a single-cell suspension using a Dounce homogenizer. Chromatin immunoprecipitations were performed with sonicated chromatin and either Glucocorticoid Receptor (D6H2L) XP[®] Rabbit mAb #12041 or Tri-Methyl-Histone H3 (Lys4) (C42D8) Rabbit mAb #9751 using SimpleChIP[®] Plus Sonication Chromatin IP Kit #56383. DNA Libraries were prepared using SimpleChIP[®] ChIP-seq DNA Library Prep Kit for Illumina[®] #56795. The figure shows binding across Mi2, a known target gene of both GR and H3K4me3.

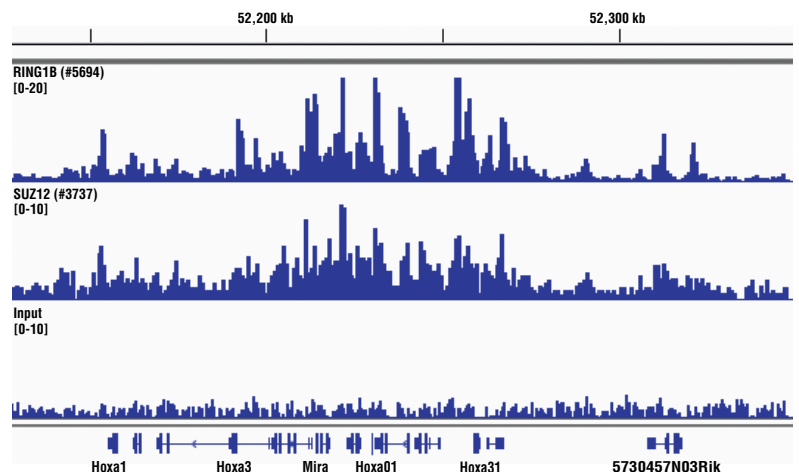


FIGURE 4. Mouse liver was cross-linked for 30 min and disaggregated into a single-cell suspension using a Dounce homogenizer. Chromatin immunoprecipitations were performed with sonicated chromatin and either RING1B (D22F2) XP[®] Rabbit mAb #5694 or SUZ12 (D39F6) XP[®] Rabbit mAb #3737 using SimpleChIP[®] Plus Sonication Chromatin IP Kit #56383. DNA Libraries were prepared using SimpleChIP[®] ChIP-seq DNA Library Prep Kit for Illumina[®] #56795. RING1B and SUZ12 are components of the PRC1 and PRC2 polycomb repressor complexes respectively, and are known to co-localize on chromatin. The figure shows binding of RING1B and SUZ12 across the HoxA gene cluster, known targets of both RING1B and SUZ12.

Thank you for your recent purchase. If you would like to provide a review visit cellsignal.com/comments.

www.cellsignal.com

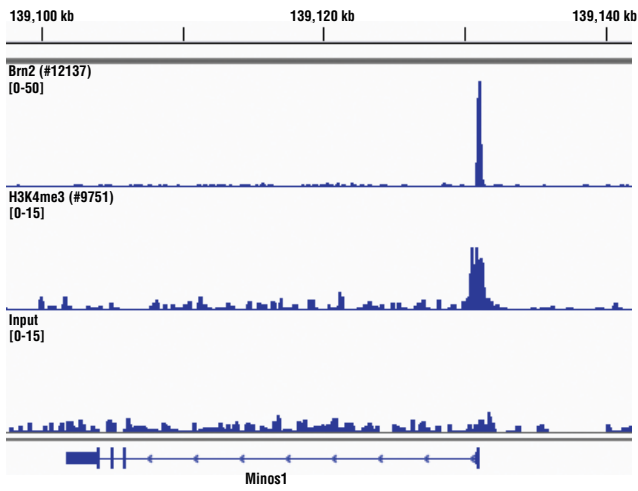


FIGURE 5. Mouse brain was cross-linked for 10 min and disaggregated into a single-cell suspension using a Dounce homogenizer. Chromatin immunoprecipitations were performed with sonicated chromatin and either Brn2/POU3F2 (D2C1L) Rabbit mAb #12137 or Tri-Methyl-Histone H3 (Lys4) (C42D8) Rabbit mAb #9751 using SimpleChIP® Plus Sonication Chromatin IP Kit #56383. DNA Libraries were prepared using SimpleChIP® ChIP-seq DNA Library Prep Kit for Illumina® #56795. The figure shows binding across Minos1, a known target gene of both BRN2 and H3K4me3.

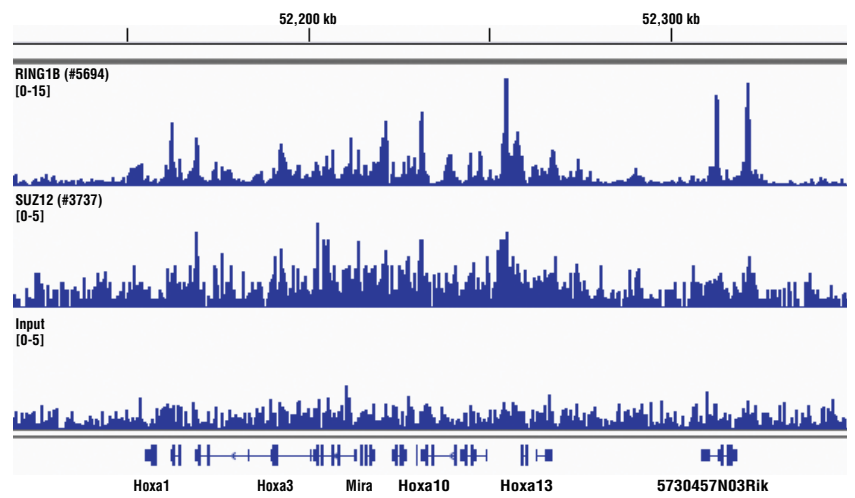


FIGURE 6. Mouse brain was cross-linked for 30 min and disaggregated into a single-cell suspension using a Dounce homogenizer. Chromatin immunoprecipitations were performed with sonicated chromatin and either RING1B (D22F2) XP® Rabbit mAb #5694 or SUZ12 (D39F6) XP® Rabbit mAb #3737 using SimpleChIP® Plus Sonication Chromatin IP Kit #56383. DNA Libraries were prepared using SimpleChIP® ChIP-seq DNA Library Prep Kit for Illumina® #56795. RING1B and SUZ12 are components of the PRC1 and PRC2 polycomb repressor complexes respectively, and are known to co-localize on chromatin. The figure shows binding of RING1B and SUZ12 across the HoxA gene cluster, known targets of both RING1B and SUZ12.

Thank you for your recent purchase. If you would like to provide a review visit cellsignal.com/comments.

www.cellsignal.com

Introduction:

The chromatin immunoprecipitation (ChIP) assay is a powerful and versatile technique used for probing protein-DNA interactions within the natural chromatin context of the cell (1,2). This assay can be used to identify multiple proteins associated with a specific region of the genome, or the opposite, to identify the many regions of the genome associated with a particular protein (3-6). In addition, the ChIP assay can be used to define the spatial and temporal relationship of a particular protein-DNA interaction. For example, the ChIP assay can be used to determine the specific order of recruitment of various protein factors to a gene promoter or to "measure" the relative amount of a particular histone modification across an entire gene locus during gene activation (3,4). In addition to histone proteins, the ChIP assay can also be used to analyze binding of transcription factors, transcription co-factors, DNA replication factors, and DNA repair proteins.

When performing the ChIP assay, cells or tissues are first fixed with formaldehyde, a reversible protein-DNA cross-linking agent that serves to fix or "preserve" the protein-DNA interactions occurring in the cell (see method overview) (1,2). Cells are lysed and chromatin is harvested and fragmented using either sonication or enzymatic digestion. The chromatin is then subjected to immunoprecipitation using antibodies specific to a particular protein or histone modification. Any DNA sequences that are associated with the protein or histone modification of interest will co-precipitate as part of the cross-linked chromatin complex and the relative amount of that DNA sequence will be enriched by the immunoselection process. After immunoprecipitation, the protein-DNA cross-links are reversed and the DNA is purified. The enrichment of a particular DNA sequence or sequences can then be detected by a number of different methods.

Standard PCR methods are often employed to identify the DNA sequences or regions of the genome associated with a particular protein or histone modification (1,2). PCR is used to measure the relative abundance of a particular DNA sequence enriched by a protein-specific immunoprecipitation versus an immunoprecipitation with a non-specific antibody control. PCR products are run on an agarose or acrylamide gel to facilitate quantification, and the level of enrichment of the DNA sequence

is determined relative to the total amount of input DNA (Percent Input Method). The level of enrichment can also be expressed as fold enrichment above background (enrichment relative to that of the non-specific antibody control). Real-time PCR provides a more accurate, gel-free system for the quantification of DNA enrichment. Alternatively, the ChIP assay can be combined with genomic tiling micro-array (ChIP on chip) techniques, sequencing, or cloning strategies, which allow for genome-wide analysis of protein-DNA interactions and histone modifications (5-8).

The SimpleChIP® Plus Sonication Chromatin IP Kit #56383 contains buffers and reagents needed to perform the ChIP assay with mammalian cells and tissue samples, and works for both histone modifications and non-histone DNA-binding proteins. After cross-linking, tissues are disaggregated into a single-cell suspension. Cells are then lysed and the chromatin is fragmented by sonication to obtain chromatin fragments of 200 to 1000 bp in size. Sonication-based fragmentation is the more traditional method for fragmenting chromatin; however, sonication should be optimized such that the desired fragment size is achieved with the minimal amount of sonication required, as over-sonication can result in a decrease in immunoprecipitation, especially for transcription factors and cofactors. The cell and nuclear lysis buffers for this kit have been optimized to maximize enrichment of histones, transcription factors, and cofactors. Chromatin immunoprecipitations are performed using antibodies and ChIP-Grade Protein G Magnetic Beads. After reversal of protein-DNA cross-links, the DNA is purified using DNA purification spin columns provided in the kit. The DNA purification spin columns combine the convenience of spin-column technology with the selective binding properties of a uniquely designed silica membrane that allows for efficient recovery of DNA and removal of protein contaminants without the need for phenol/chloroform extractions and ethanol precipitations. After DNA purification, the enrichment of particular DNA sequences can be analyzed by a variety of methods.

In addition to providing buffers and reagents required to perform the ChIP assay, the SimpleChIP® Plus Sonication Chromatin IP Kit #56383 provides important controls that allow for user determination of a successful ChIP experiment. The kit contains a positive control histone H3 rabbit

monoclonal antibody, a negative control normal rabbit IgG antibody, and primer sets for PCR detection of the ribosomal protein L30 (RPL30) gene locus (human and mouse primer sets are included in the kit). Histone H3 is a core component of chromatin in the cell and is bound to most DNA sequences throughout the genome, including the RPL30 locus. Thus, immunoprecipitation of chromatin with the histone H3 rabbit monoclonal antibody will enrich for the RPL30 gene, while immunoprecipitation with the normal rabbit IgG antibody will not result in RPL30 gene enrichment. This enrichment can be quantified using either standard PCR or quantitative real-time PCR methods with the RPL30 primer sets provided in the kit. Importantly, since histone H3 is bound to most DNA sequences throughout the genome, the Histone H3 Rabbit mAb serves as a positive control IP for almost any locus studied, giving the user even more confidence that their ChIP experiment was performed successfully.

The SimpleChIP® Plus Sonication Chromatin IP Kit #56383 provides enough reagents to perform up to 20 chromatin preparations and 24 immunoprecipitations. It is optimized for 100 mg of tissue or 2×10^6 cultured cells per chromatin preparation and 25 mg of tissue or 4×10^6 cultured cells per immunoprecipitation. A ChIP assay can be performed in as little as two days and can easily be scaled up or down for use with more or less tissue or cells. This kit is compatible with both ChIP-qPCR and ChIP-seq.

Background References:

- (1) Orlando, V. (2000) *Trends Biochem Sci* 25, 99–104.
- (2) Kuo, M.H. and Allis, C.D. (1999) *Methods* 19, 425–33.
- (3) Agaloti, T. et al. (2000) *Cell* 103, 667–78.
- (4) Soutoglou, E. and Talianidis, I. (2002) *Science* 295, 1901–4.
- (5) Mikkelsen, T.S. et al. (2007) *Nature* 448, 553–60.
- (6) Lee, T.I. et al. (2006) *Cell* 125, 301–13.
- (7) Weinmann, A.S. and Farnham, P.J. (2002) *Methods* 26, 37–47.
- (8) Wells, J. and Farnham, P.J. (2002) *Methods* 26, 48–56.

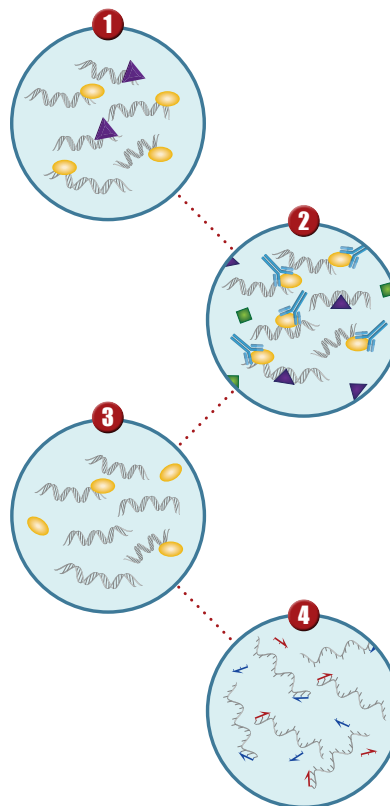
Method Overview

1. Cells are fixed with formaldehyde to fix proteins (both histone and non-histone) to DNA. Chromatin is sheared with sonication into 200-1000 bp DNA-protein fragments.

2. An antibody specific to a protein of interest (histone or non-histone) is added. The complex co-precipitates and is captured by Protein G beads.

3. The protein-DNA cross-links are reversed and the DNA is purified.

4. The enrichment of particular DNA sequences is detected by downstream analysis such as Real-time PCR and Next-generation Sequencing.



Sonication Chromatin Immunoprecipitation Protocol

!	This ! signifies an important step in the protocol regarding volume changes based on the number of chromatin preparations (chromatin preps). One chromatin prep is defined as 10-20 x 10 ⁶ tissue cultured cells or 100-150 mg of disaggregated tissue.
!!	This !! signifies an important step to dilute a buffer before proceeding.
SAFE STOP	This is a safe stopping point in the protocol, if stopping is necessary.

I. Tissue Cross-linking and Sample Preparation

When harvesting tissue, remove unwanted material from the sample, such as fat and necrotic material. Tissue can be processed and cross-linked immediately or frozen on dry ice for processing later. For optimal ChIP results, use 25 mg of tissue for each immunoprecipitation to be performed. An additional 5 mg of tissue should be processed for Analysis of Chromatin Digestion and Concentration and for use as input chromatin (Section IV). The chromatin yield does vary between tissue types, and some tissues may require more than 25 mg for each immunoprecipitation.

One chromatin preparation is defined as 100 to 150 mg of tissue. This recommended amount of tissue accounts for potential low yield with some tissue types and also ensures efficient chromatin fragmentation during sonication. Please see Appendix A for more information regarding the expected chromatin yield for different types of tissue.

Before starting:

(!) All buffer volumes should be increased proportionally based on the number of chromatin preps in the experiment.

- Remove and warm 200X Protease Inhibitor Cocktail (PIC) #7012 and Glycine Solution (10X) #7005. Make sure PIC is completely thawed.
- Prepare 3 ml of Phosphate Buffered Saline (PBS) + 15 µl 200X PIC per chromatin preparation and place on ice.
- Prepare 1 ml of 1X ChIP Sonication Cell Lysis Buffer (0.5 ml 2X ChIP Sonication Cell Lysis Buffer #96529 + 0.5 ml water) + 5 µl 200X PIC per chromatin preparation and place on ice.
- Prepare 28 µl of 37% formaldehyde per chromatin preparation and keep at room temperature. Alternatively, 62.5 µl of 16% methanol-free formaldehyde can be used. Use fresh formaldehyde that is not past the manufacturer's expiration date.

1. Weigh the fresh or frozen tissue sample. Use 100 to 150 mg of tissue per chromatin preparation.
2. Place tissue sample in a petri dish and mince into 1-2 mm cubes using a clean scalpel or razor blade. Keep dish on ice. It is important to keep the tissue cold to avoid protein degradation.
3. Transfer minced tissue to a 15 ml conical tube and add 1 ml of ice-cold PBS + PIC per chromatin preparation.
4. To crosslink proteins to DNA, add 28 µl of 37% formaldehyde or 62.5 µl of 16% methanol-free formaldehyde per 1 ml of PBS + PIC and keep at room temperature for at least 10 min. Final formaldehyde concentration is 1%. For histone modification ChIP, 10 min fixation is sufficient; however, for transcription factor ChIP, we recommend fixation for 10 to 30 min, and for transcription cofactor ChIP, we recommend fixation for 30 min (see Figure 7 in Appendix B).
5. Stop cross-linking by adding 100 µl of 10X Glycine #7005 per 1 ml of PBS + PIC. Mix and incubate on ice for 5 min.
6. Centrifuge tissue at 1,200 x g for 5 min at 4°C.
7. Remove supernatant and wash with 1 ml of ice-cold PBS + PIC per chromatin preparation.
8. Centrifuge at 1,200 x g for 5 min at 4°C.
9. Repeat step 7 and 8 one additional time.
10. Remove supernatant and resuspend tissue in 1 ml 1X ChIP Sonication Cell Lysis Buffer + PIC per chromatin preparation. (**SAFE STOP**) Alternatively, tissue pellets may be stored at -80°C before disaggregation for up to 3 months.
11. Transfer tissue suspension to a Dounce homogenizer using a cut pipet tip.
12. Use tight fitting pestle (Type A) to disaggregate tissue pieces with 20 strokes or until no chunks of tissue are observed.
13. Transfer cell suspension to a 1.5 ml tube and immediately proceed to Nuclei Preparation and Chromatin Fragmentation (Section III).

II. Cell Culture Cross-linking and Sample Preparation:

For optimal ChIP results, use approximately 4 x 10⁶ cells for each immunoprecipitation to be performed. For HCT 116 cells, this is equivalent to 1/3 of a 15 cm culture dish containing cells that are 90% confluent in 20 ml of growth medium. An additional 1 x 10⁶ cells should be processed for Analysis of Chromatin Digestion and Concentration and for use as

input chromatin (Section IV).

One chromatin preparation is defined as 1 x 10⁷ to 2 x 10⁷ cells. This recommended cell number accounts for potential low yield with some cell types and also ensures efficient chromatin fragmentation during sonication.

Before starting:

(!) All buffer volumes should be increased proportionally based on the number of 15 cm tissue culture dishes (or 20 ml suspension cells) used in the experiment.

- Remove and warm 200X Protease Inhibitor Cocktail (PIC) #7012 and Glycine Solution (10X) #7005. Make sure PIC is completely thawed.
- Prepare 2 ml of Phosphate Buffered Saline (PBS) + 10 µl 200X PIC per 15 cm dish (or 20 ml suspension cells) to be processed and place on ice.
- Prepare 40 ml of PBS per 15 cm dish (or 20 ml suspension cells) to be processed and place on ice.
- Prepare 540 µl of 37% formaldehyde per 15 cm dish (or 20 ml suspension cells) of cells to be processed and keep at room temperature. Alternatively, 1.25 ml of 16% methanol-free formaldehyde can be used. Use fresh formaldehyde that is not past the manufacturer's expiration date.
- Prepare 1 ml of 1X ChIP Sonication Cell Lysis Buffer (0.5 ml 2X ChIP Sonication Cell Lysis Buffer #96529 + 0.5 ml water) + 5 µl 200X PIC per chromatin preparation.

1. To crosslink proteins to DNA, add 540 µl of 37% formaldehyde or 1.25 ml of 16% methanol-free formaldehyde to each 15 cm culture dish containing 20 ml medium (or 20 ml suspension cells). For optimal fixation of suspension cells, cell density should be less than 0.5 x 10⁶ cells/ml at fixation. Swirl briefly to mix and incubate 10 min at room temperature. Final formaldehyde concentration is 1%. Addition of formaldehyde may result in a color change of the medium.
2. Add 2 ml of 10X glycine to each 15 cm dish containing 20 ml medium, swirl briefly to mix, and incubate 5 min at room temperature. Addition of glycine may result in a color change of the medium.
3. For suspension cells:
 - a. Transfer cells to a 50 ml conical tube, centrifuge 1,000 x g for 5 min at 4°C, and wash pellet two times with 20 ml ice-cold PBS. Remove PBS and proceed to step 3b. Alternatively, cell pellets can be frozen on dry ice and stored at -80°C for later use.
 - b. Resuspend up to 2 x 10⁷ cells per 1 ml of 1X ChIP Sonication Cell Lysis Buffer + PIC per chromatin preparation, and immediately proceed to Nuclei Preparation and Chromatin Fragmentation (Section III). (**SAFE STOP**) Alternatively samples may be stored at -80°C for up to 3 months.
4. For adherent cells:
 - a. Remove media and wash cells two times with 20 ml ice-cold 1X PBS, completely removing wash from culture dish each time.
 - b. Add 2 ml ice-cold PBS + PIC to each 15 cm dish. Scrape cells into cold buffer. Combine cells from all culture dishes into one 15 ml conical tube.
 - c. Centrifuge cells at 1,000 x g for 5 min at 4°C. Remove PBS and proceed to step 4d. Alternatively, cell pellets can be frozen on dry ice and stored at -80°C for later use.
 - d. Resuspend up to 2 x 10⁷ cells per 1 ml of 1X ChIP Sonication Cell Lysis Buffer + PIC per chromatin preparation and immediately proceed to Nuclei Preparation and Chromatin Fragmentation (Section III). (**SAFE STOP**) Alternatively samples may be stored at -80°C for up to 3 months.

III. Nuclei Preparation and Chromatin Fragmentation

One chromatin preparation is defined as 100 to 150 mg of tissue or 1 x 10⁷ to 2 x 10⁷ tissue culture cells. Multiple chromatin preparations can be performed simultaneously, as long as the amounts of buffers are scaled appropriately and sonication is performed on 1 ml samples. The number of cells and volume of sample used for sonication is critical for generation of appropriately sized chromatin fragments.

Before starting:

(!) All buffer volumes should be increased proportionally based on the number of chromatin preps in the experiment.

- Remove and warm 200X Protease Inhibitor Cocktail (PIC) #7012. Make sure it is completely thawed prior to use.
- Prepare 1 ml of 1X ChIP Sonication Cell Lysis Buffer (0.5 ml 2X ChIP Sonication

Sonication Chromatin Immunoprecipitation Protocol (cont.)

Cell Lysis Buffer #96529 + 0.5 ml water) + 5 µl 200X PIC per chromatin preparation.

- Prepare 1 ml ChIP Sonication Nuclear Lysis Buffer #28778 + 5 µl 200X PIC per chromatin preparation.

1. Incubate cell suspension in 1X ChIP Sonication Cell Lysis Buffer + PIC from Section I or Section II on ice for 10 min.
2. Pellet cells at 5,000 x g for 5 min at 4°C. Remove supernatant and resuspend pellet a second time in 1 ml ice-cold 1X ChIP Sonication Cell Lysis Buffer + PIC per chromatin preparation.
3. Incubate cell suspension on ice for 5 min. Pellet cells at 5,000 x g for 5 min at 4°C. Please note that cross-linked cells may not be completely lysed until sonication.
4. Resuspend cells in 1 ml ice-cold ChIP Sonication Nuclear Lysis Buffer #28778 + PIC per chromatin preparation and incubate on ice for 10 min. Transfer 1 ml of cell suspension to an appropriately sized tube for sonication. Please note that cross-linked cells and nuclei may not be completely lysed until sonication.
5. Fragment chromatin by sonication. Sonication conditions may need to be determined empirically by testing different sonicator power settings and durations of sonication. Optimal sonication conditions will generate chromatin in which 60 to 90% of the chromatin fragments are smaller than 1kb. Longer cross-linking times may decrease the proportion of fragments being smaller than 1 kb to 30 to 60% (see Figure 7 in Appendix B and Figure 8 in Appendix C). Use the minimal number of sonication cycles required to generate the desired length of chromatin fragments, as over-sonication can result in reduction or loss of signal due to harsh treatment of the chromatin.
 - For each sonication sample, we recommend using 100-150 mg of tissue or 1×10^7 to 2×10^7 cells per 1 ml ChIP Sonication Nuclear Lysis Buffer. Sonicating in larger volumes and/or using greater concentration of cells will decrease the efficiency of chromatin fragmentation.
 - Using a Branson Digital Sonifier D250 probe sonicator with a 1/8-inch Micro Tip, 8 min of 1 sec on/1 sec off sonication cycle (4 min of sonication time) at 50% amplitude typically gives good fragmentation and chromatin IP efficiency.
 - Be sure to keep the chromatin sample cool during sonication by keeping the tube containing the chromatin in an ice water bath during and in between the sonication steps. Do not allow the probe to touch the bottom or wall of the tube. Stop sonication and adjust the position of tube if chromatin sample foams during sonication.
6. Clarify lysates by centrifugation at 21,000 x g in a microcentrifuge for 10 min at 4°C.
7. Transfer supernatant to a new tube. (**SAFE STOP**) This is the cross-linked chromatin preparation, which can be used immediately for immunoprecipitation, or stored at -80°C until further use. Remove 50 µl of the chromatin preparation for Analysis of Chromatin Digestion and Concentration (Section IV).

IV. Analysis of Chromatin Fragmentation and Concentration (Recommended Step)

1. To the 50 µl chromatin sample (from Step 7 in Section III), add 100 µl nuclease-free water, 6 µl 5 M NaCl #7010, and 2 µl RNase A #7013. Vortex to mix and incubate samples at 37°C for 30 min.
2. To each RNase A-digested sample, add 2 µl Proteinase K #10012. Vortex to mix and incubate samples at 65°C for 2 hr.
3. Purify DNA from samples using DNA purification spin columns as described in Section VII. (**SAFE STOP**) DNA may be stored at -20°C for up to 6 months.
4. After purification of DNA, remove a 10 µl sample and determine DNA fragment size by electrophoresis on a 1% agarose gel. A DNA smear ranging from 200 bp to several kb is expected (see Figure 7 in Appendix C). Approximately 60 to 90% of total DNA fragments should be less than 1 kb. Refer to Appendix B for optimization of sonication conditions.
5. Determine DNA concentration using a spectrophotometer. Ideally, DNA concentration should be between 50 and 200 µg/ml.

V. Chromatin Immunoprecipitation

For optimal ChIP results, use approximately 5 to 10 µg of sonicated, cross-linked chromatin (as determined in Section IV) per immunoprecipitation. This should be roughly equivalent to a single 100 µl IP prep from 25 mg of disaggregated tissue or 4x10⁶ tissue culture cells. Typically, 100 µl of digested chromatin is diluted into 400 µl 1X ChIP Buffer prior to the addition of antibodies. However, if more than 100 µl of chromatin is required per IP, the cross-linked chromatin preparation must be diluted into 1X ChIP buffer at a dilution ratio of

1:4. No additional protein G magnetic beads are necessary in this case, although prolonged incubation time with beads is helpful.

Before starting:

(!) All buffer volumes should be increased proportionally based on the number of immunoprecipitations in the experiment.

- Remove and warm 200X Protease Inhibitor Cocktail (PIC) #7012. Make sure PIC is completely thawed.
- Remove and warm 10X ChIP Buffer #7008 and ensure SDS is completely in solution.
- Thaw fragmented chromatin preparation (from Step 7 in Section III) and place on ice.
- Prepare low salt wash: 3 ml 1X ChIP Buffer (300 µl 10X ChIP Buffer #7008 + 2.7 ml water) per immunoprecipitation. Keep on ice.
- Prepare high salt wash: 1 ml 1X ChIP Buffer (100 µl 10X ChIP Buffer #7008 + 900 µl water) + 70 µl 5M NaCl #7010 per immunoprecipitation. Keep on ice.

1. In one tube, prepare enough 1X ChIP Buffer + PIC for the dilution of sonicated chromatin into the desired number of immunoprecipitations. For each immunoprecipitation, dilute chromatin (5-10 µg of DNA) with 1X ChIP Buffer + PIC into a total of 500 µl. **For efficient immunoprecipitation, chromatin must be diluted into 1 x ChIP buffer at a dilution factor of 1:4 or greater.** Place mix on ice. When determining the number of immunoprecipitations, remember to include the positive control Histone H3 (D2B12) XP[®] Rabbit mAb #4620 and negative control Normal Rabbit IgG antibody #2729 samples.
2. Remove a 10 µl sample of the diluted chromatin and transfer to a microfuge tube. This is your 2% Input Sample, which can be stored at -20°C until further use (Step 1 in Section VI).
3. For each immunoprecipitation, aliquot 500 µl the diluted chromatin into a 1.5 ml microcentrifuge tube and add the immunoprecipitating antibody. The amount of antibody required per IP varies and should be used according to the manufacturers' recommendations. For the positive control Histone H3 (D2B12) XP[®] Rabbit mAb #4620, add 10 µl to the IP sample. For the negative control Normal Rabbit IgG #2729, add 1 µl (1 µg) to 2 µl (2 µg) to the IP sample. Incubate IP samples 4 hr to overnight at 4°C with rotation.

NOTE: Most antibodies from Cell Signaling Technology work optimally between 1 and 2 µg per IP sample. In the case where there are multiple samples with varying concentrations, it is best to match the negative control Normal Rabbit IgG #2729 to the highest antibody concentration.

4. Resuspend ChIP-Grade Protein G Magnetic Beads #9006 by gently vortexing. Immediately add 30 µl of Protein G Magnetic Beads to each IP reaction and incubate for 2 hr at 4°C with rotation. Alternatively, beads can be added to the overnight antibody incubation in Step 3, but this may increase background signal.
5. Pellet Protein G Magnetic Beads in each immunoprecipitation by placing the tubes in a magnetic separation rack. Wait 1 to 2 min for solution to clear and then carefully remove supernatant.
6. Wash Protein G Magnetic Beads by adding 1 ml of low salt wash to the beads and incubate at 4°C for 5 min with rotation. Repeat steps 5 and 6 two additional times for a total of 3 low salt washes.
7. Add 1 ml of high salt wash to the beads and incubate at 4°C for 5 min with rotation.
8. Pellet Protein G Magnetic Beads in each immunoprecipitation by placing the tubes in a magnetic separation rack. Wait 1 to 2 min for solution to clear and then carefully remove supernatant. Immediately proceed to Section VI.

VI. Elution of Chromatin from Antibody/Protein G Magnetic Beads and Reversal of Cross-links

Before starting:

(!) All buffer volumes should be increased proportionally based on the number of immunoprecipitations in the experiment.

- Remove and warm 2X ChIP Elution Buffer #7009 in a 37°C water bath and ensure SDS is in solution.
- Set a water bath or thermomixer to 65°C.
- Prepare 150 µl 1X ChIP Elution Buffer (75 µl 2X ChIP Elution Buffer #7009 + 75 µl water) for each immunoprecipitation and the 2% input samples.

1. Add 150 µl of the 1X ChIP Elution Buffer to the 2% input sample tubes and set aside at room temperature until Step 7.
2. Add 150 µl 1X ChIP Elution Buffer to each IP sample.

Sonication Chromatin Immunoprecipitation Protocol (cont.)

- Elute chromatin from the antibody/Protein G Magnetic Beads for 30 min at 65°C with gentle vortexing (1,200 rpm). A thermomixer works best for this step; however a 65°C water bath with frequent mixing is also sufficient. Alternatively, elutions can be performed at room temperature with rotation, but may not be as complete.
- Briefly centrifuge samples at 10,000 x g for 10 sec to remove evaporated sample from the microcentrifuge tube cap.
- Pellet Protein G Magnetic Beads by placing the tubes in a magnetic separation rack and wait 1 to 2 min for solution to clear.
- Carefully transfer eluted chromatin supernatant to a new tube.
- To all tubes, including the 2% input samples from Step 1, reverse cross-links by adding 6 µl 5M NaCl #7010 and 2 µl Proteinase K #10012, and incubate 2 hr at 65°C. This incubation can be extended overnight.
- Immediately proceed to Section VII. (**SAFE STOP**) Alternatively, samples can be stored at -20°C for up to 4 days. However, to avoid formation of a precipitate, be sure to warm samples to room temperature before adding DNA Binding Buffer #10007 (Section VII, Step 1).

VII. DNA Purification Using Spin Columns:

Before starting:

- (!)** Add 24 ml of ethanol (96-100%) to DNA Wash Buffer #10008 before use. This step only has to be performed once prior to the first set of DNA purifications.
 - Prepare one DNA purification spin column and collection tube #10010 for each DNA sample from Section VI.
- Add 750 µl DNA Binding Buffer #10007 to each DNA sample and vortex briefly.
 - 5 volumes of DNA Binding Buffer should be used for every 1 volume of sample.
 - Transfer 450 µl of each DNA sample from Step 1 to a DNA spin column in collection tube.
 - Centrifuge at 14,000 rpm in a microcentrifuge for 30 sec.
 - Remove the spin column from the collection tube and discard the liquid. Replace spin column in the collection tube.
 - Transfer the remaining 450 µl of each DNA sample from Step 1 to the spin column in collection tube. Repeat Steps 3 and 4.
 - Add 750 µl of DNA Wash Buffer #10008 to the spin column in collection tube.
 - Centrifuge at 14,000 rpm in a microcentrifuge for 30 sec.
 - Remove the spin column from the collection tube and discard the liquid. Replace spin column in the collection tube.
 - Centrifuge at 14,000 rpm in a microcentrifuge for 30 sec
 - Discard collection tube and liquid. Retain spin column.
 - Add 50 µl of DNA Elution Buffer #10009 to each spin column and place into a clean 1.5 ml microcentrifuge tube.
 - Centrifuge at 14,000 rpm in a microcentrifuge for 30 sec to elute DNA.
 - Remove and discard DNA spin column. Eluate is now purified DNA. (**SAFE STOP**) Samples can be stored at -20°C for up to 6 months.

VIII. Quantification of DNA by PCR:

Recommendations:

- Use filtered pipette tips to minimize risk of contamination.
- The control primers included in the kit are specific for the human or mouse RPL30 gene (#7014 or #7015) and can be used for either standard PCR or quantitative real-time PCR. If the user is performing ChIP from another species, it is recommended that the user design the appropriate specific primers to DNA and determine the optimal PCR conditions.
- A Hot-Start Taq polymerase is recommended to minimize the risk of nonspecific PCR products.
- PCR primer selection is critical. Primers should be designed with close adherence to the following criteria:

Primer length:	24 nucleotides
Optimum Tm:	60°C
Optimum GC:	50%
Amplicon size:	150 to 200 bp (for standard PCR)
	80 to 160 bp (for real-time quantitative PCR)

Standard PCR Method:

- Label the appropriate number of PCR tubes or PCR plates compatible with the model

of PCR machine to be used. These should include the 2% input sample, the positive control histone H3 sample, the negative control normal rabbit IgG sample, and a tube with no DNA to control for DNA contamination.

- Add 2 µl of the appropriate DNA sample to each tube.
- Prepare a master reaction mix as described below, making sure to add enough reagent for two extra tubes to account for loss of volume. Add 18 µl of master mix to each reaction tube.

Reagent	Volume for 1 PCR Reaction (18 µl)
Nuclease-free H ₂ O	12.5 µl
10X PCR Buffer	2.0 µl
4 mM dNTP Mix	1.0 µl
5 µM RPL30 Primers	2.0 µl
Taq DNA Polymerase	0.5 µl

- Start the following PCR reaction program:

a.	Initial Denaturation	95°C	5 min
b.	Denature	95°C	30 sec
c.	Anneal	62°C	30 sec
d.	Extension	72°C	30 sec
e.	Repeat Steps b-d for a total of 34 cycles.		
f.	Final Extension	72°C	5 min

- Remove 10 µl of each PCR product for analysis by 2% agarose gel or 10% polyacrylamide gel electrophoresis with a 100 bp DNA marker. The expected size of the PCR product is 161 bp for human RPL30 #7014 and 159 bp for mouse RPL30 #7015.

Real-Time Quantitative PCR Method:

- Label the appropriate number of PCR tubes or PCR plates compatible with the model of PCR machine to be used. PCR reactions should include the positive control histone H3 sample, the negative control normal rabbit IgG sample, a tube with no DNA to control for contamination, and a serial dilution of the 2% input chromatin DNA (undiluted, 1:5, 1:25, 1:125) to create a standard curve and determine the efficiency of amplification.
- Add 2 µl of the appropriate DNA sample to each tube or well of the PCR plate.
- Prepare a master reaction mix as described below. Setup 2-3 replicates for each PCR reaction. Add enough reagents to account for loss of volume. Add 18 µl of reaction mix to each PCR reaction tube or well. (**SAFE STOP**) If necessary cover plate with aluminum foil to avoid light and store at 4°C up to 4 hours or -20°C overnight until machine is ready for use.

Reagent	Volume for 1 PCR Reaction (18 µl)
Nuclease-free H ₂ O	6 µl
5 µM RPL30 Primers	2 µl
SimpleChIP® Universal qPCR Master Mix #88989	10 µl

- Start the following PCR reaction program:

a.	Initial Denaturation	95°C 3 min
b.	Denature	95°C 15 sec
c.	Anneal and Extension:	60°C 60 sec
d.	Repeat steps b and c for a total of 40 cycles.	

- Analyze quantitative PCR results using the software provided with the real-time PCR machine. Alternatively, one can calculate the IP efficiency manually using the Percent Input Method and the equation shown below. With this method, signals obtained from each immunoprecipitation are expressed as a percent of the total input chromatin.

$$\text{Percent Input} = 2\% \times 2^{(C[T]_{2\% \text{ Input Sample}} - C[T]_{\text{IP Sample}})}$$

$$C[T] = C_T = \text{Average threshold cycle of PCR reaction}$$

IX. NG-Sequencing Library Construction

The immuno-enriched DNA samples prepared with this kit are directly compatible with ChIP-seq. For downstream NG-sequencing DNA library construction, use a DNA library preparation protocol or kit compatible with your downstream sequencing platform. For sequencing on Illumina® platforms, we recommend SimpleChIP® ChIP-seq DNA Library Prep Kit for Illumina® #56795 and its associated index primers SimpleChIP® ChIP-seq Multiplex Oligos for Illumina® (Single Index Primers) #29580 or SimpleChIP® ChIP-seq Multiplex Oligos for Illumina® (Dual Index Primers) #47538.

Recommendations:

- For transcription factor or co-factor ChIP-seq, use 5 ng of ChIP-enriched DNA and amplification of the adaptor-ligated DNA with 10 cycles of PCR.
- For total histone and histone modifications, or input samples, start with 50 ng of ChIP-enriched DNA and amplification of the adaptor-ligated DNA with 6 cycles of PCR.
- For library construction of ChIP-enriched DNA for all target types, perform cleanup of adaptor-ligated DNA without size selection.
- After DNA library construction, check the DNA library for presence of adaptor dimers (~140 bp) using an Agilent High Sensitivity DNA Kit (Agilent Technologies, Cat# G2938-90322), or by agarose gel electrophoresis with 50-100 ng DNA on a 2% agarose TAE gel. If adaptor dimers are present, repeat cleanup of PCR amplified material.
- The quality of the library can also be confirmed using qPCR and primer sets to known positive and negative target loci. Positive primer pairs should still give the same high signal compared to negative primers as seen in the original qPCR analysis of ChIP-enriched DNA.
- After final cleanup and quality checks, prepare final purified library samples at 2-10 nM for high throughput sequencing.

APPENDIX A: Expected Chromatin Yield

When harvesting cross-linked chromatin from tissue samples, the yield of chromatin can vary significantly between tissue types. The table to the right provides a range for the expected yield of chromatin from 100 mg of tissue compared to 2 x 10⁷ HCT 116 cells, and the expected DNA concentration, as determined in Section IV of the protocol. For optimal ChIP results, we recommend SimpleChIP[®] ChIP-seq DNA Library Prep Kit for Illumina[®] #56795 and its associated index primers SimpleChIP[®] ChIP-seq Multiplex Oligos for Illumina[®] (Single Index Primers) #29580 or SimpleChIP[®] ChIP-seq Multiplex Oligos for Illumina[®] (Dual Index Primers) #47538.

Tissue/Cell	Total Chromatin Yield	Expected DNA Concentration
Liver	150 µg per 100 mg tissue	150 µg/ml
Brain	50 µg per 100 mg tissue	50 µg/ml
Heart	25 µg per 100 mg tissue	20 µg/ml
HCT 116	100-150 µg per 2 x 10 ⁷ cells	100-150 µg/ml

APPENDIX B: Optimization of Formaldehyde Fixation

Transcription factors and cofactors bind to chromatin DNA more loosely than histone proteins. As a result, they tend to dissociate from chromatin during sonication. Additional fixation time can result in increased capture of transcription factors and cofactors in the ChIP assay, especially with tissue samples. As shown in Figure 7, increasing the fixation time from 10 min to 30 min may reduce chromatin fragmentation size (left panel), but it significantly enhances enrichment of both cofactors RING1B and SUZ12 in heart tissue, as indicated by ChIP-qPCR (middle and right panels).

Typically, 10 min fixation is sufficient for histone modification ChIP with both cell and tissue samples, whereas transcription factors and cofactors may require additional fixation up to 30 min, especially with tissue samples.

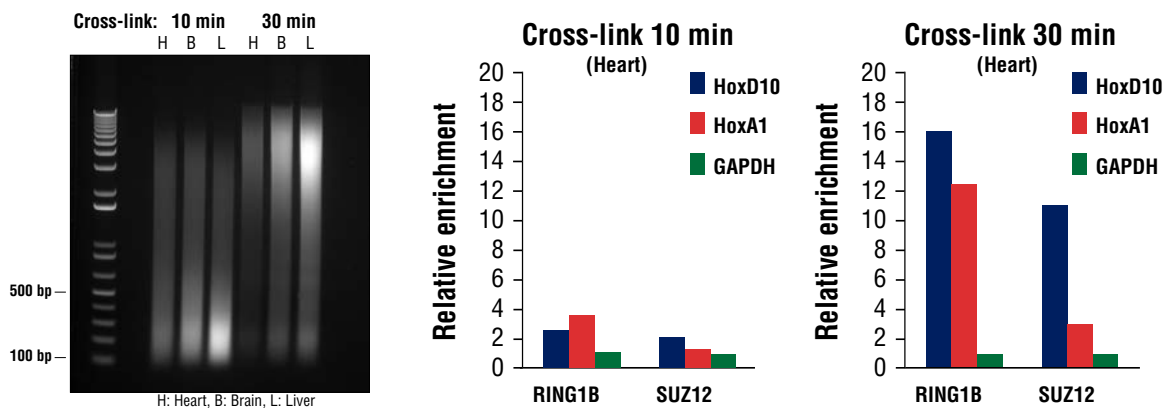


FIGURE 7. Mouse heart (H), brain (B), and liver (L) were cross-linked for 10 min or 30 min, as indicated (left panel). The chromatin was prepared and sonicated, DNA was purified and separated by electrophoresis on a 1% agarose gel. In the ChIP-qPCR assay (middle and right panels), chromatin immunoprecipitations were performed with either RING1B (D22F2) XP[®] Rabbit mAb #5694 or SUZ12 (D39F6) XP[®] Rabbit mAb #3737. The enriched DNA was quantified by real-time PCR using SimpleChIP[®] Mouse HoxD10 Exon 1 Primers #7429, SimpleChIP[®] Mouse HoxA1 Promoter Primers #7341, and SimpleChIP[®] Mouse GAPDH Intron 2 Primers #8986. The amount of immunoprecipitated DNA in each sample is represented as normalized signal to the negative GAPDH locus (equivalent to 1).

APPENDIX C: Optimization of Chromatin Fragmentation

Optimal conditions for the fragmentation of cross-linked chromatin DNA is highly dependent on the number of cells, volume of sample, length of sonication, and sonicator power setting used. For each sonication sample, we recommend using 100–150 mg of tissue or 1×10^7 to 2×10^7 cells per 1 ml ChIP Sonication Nuclear Lysis Buffer. Below is a protocol for determination of the optimal sonication conditions for a specific tissue or cell type.

1. Prepare cross-linked nuclei from 100 to 150 mg of tissue or 1×10^7 to 2×10^7 cells, as described in Sections I, II, and III. Stop after Step 4 of Section III and proceed as described below.
2. Fragment chromatin by sonication. Optimal sonication conditions can be determined for a given sonicator by varying the number of rounds or duration of sonication at a given power setting (see Step 5 in Section III for optimal power setting using a Branson Digital Sonifier 250 probe sonicator). To determine optimal sonication conditions, set up a sonication time-course experiment and remove 50 μ l samples of chromatin after a given round or duration of sonication. For example, take chromatin samples after each 1 to 2 min of sonication.
3. Clarify chromatin samples by centrifugation at 21,000 x g in a microcentrifuge for 10 min at 4°C.
4. Transfer supernatants to new microfuge tubes and add 100 μ l nuclease-free water, 6 μ l 5 M NaCl #7010, and 2 μ l RNase A #7013. Vortex to mix and incubate samples at 37°C for 30 min.
5. To each RNase A-digested sample, add 2 μ l Proteinase K #10012. Vortex to mix and incubate samples at 65°C for 2 hr.
6. Remove 20 μ l of each sample and determine DNA fragment size.
7. Choose the sonication conditions that generate optimal DNA fragment size and use for chromatin preparation in Step 5 of Section III. If optimal sonication conditions are not achieved, increase or decrease the power setting of the sonicator and repeat the sonication time course.

NOTE: Optimal sonication conditions can vary with different sample types and fixation times. Use the minimal number of sonication cycles required to generate the desired length of chromatin fragments. Over sonication, as indicated by more than 80% of total DNA fragments less than 500 bp, can result in excessive damage to the chromatin and result in lower immunoprecipitation efficiency (see Figure 8, right panel).

- For sonication of cells fixed for 10 min, optimal sonication conditions will generate a DNA smear with approximately 90% of total DNA fragments less than 1 kb (see Figure 8, left panel). Increasing the fixation time to 30 min will limit fragmentation, generating a DNA smear with approximately 60% of total DNA fragments less than 1 kb.
- For sonication of tissues fixed for 10 min, optimal sonication conditions will generate a DNA smear with approximately 60% of total DNA fragments less than 1 kb. Increasing the fixation time to 30 min will limit fragmentation, generating a DNA smear with approximately 30% of total DNA fragments less than 1 kb (see Figure 7, left panel).

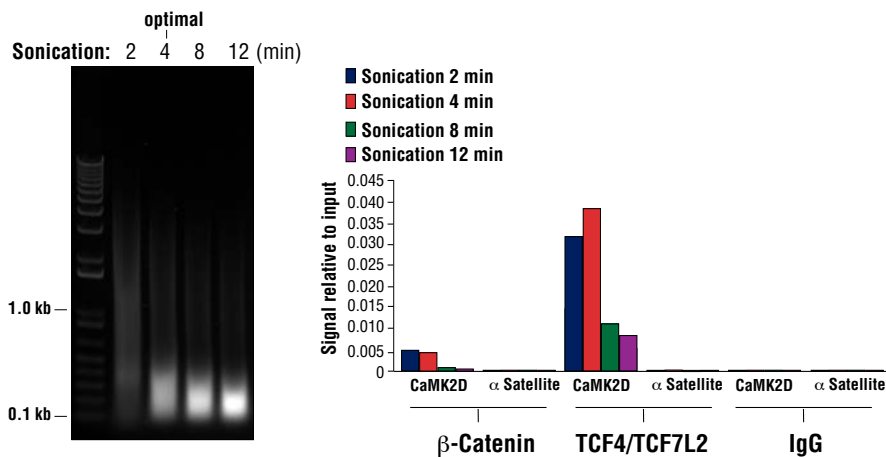


FIGURE 8. HCT 116 cells were cross-linked for 10 min and sonicated for the time indicated (left panel). DNA was purified as described in Section IV of the SimpleChIP[®] Plus Sonication Chromatin IP Kit #56383, and purified DNA was separated by electrophoresis on a 1% agarose gel. As shown in the left panel, increasing cycles of sonication reduces the size of chromatin fragments. Chromatin immunoprecipitations were performed with either Non-phospho (Active) β -Catenin (Ser33/37/Thr41) (D13A1) Rabbit mAb #8814, TCF4/TCF7L2 (C48H11) Rabbit mAb #2569, or Normal Rabbit IgG #2729 using SimpleChIP[®] Plus Sonication Chromatin IP Kit #56383. The enriched DNA was quantified by real-time PCR using SimpleChIP[®] Human CaMK2D Intron 3 Primers #5111 and SimpleChIP[®] Human α -Satellite Repeat Primers #4486. The amount of immunoprecipitated DNA in each sample is represented as signal relative to the total amount of input chromatin (equivalent to 100%; right panel). As shown, 4 min of chromatin sonication is optimal when using a Branson Digital Sonifier D250 probe sonicator with a 1/8 inch Micro Tip. Further sonication significantly impairs enrichment of both cofactor beta-catenin and transcription factor TCF4/TCF7L2 containing chromatin.

APPENDIX D: Troubleshooting Guide

Problem	Possible Causes	Recommendation
1. Concentration of the fragmented chromatin is too low.	Cell/nuclear lysis is incomplete. Not enough cells were used for the chromatin preparation.	If DNA concentration of the chromatin preparation is close to 50 µg/ml, add additional chromatin to each IP to give at least 5 µg/IP and continue with protocol. Count a separate plate of cells before cross-linking to determine an accurate cell number.
2. Chromatin is under-fragmented and fragments are too large (>50% above 1.5kb).	Cells may have been over cross-linked. Too many cells/tissues were processed.	Shorten the crosslinking time within 10-30 minute range. Reduce the amount of cell/tissues per sonication. Conduct sonication time course.
3. Chromatin is over-fragmented (>90% under 300 bp).	Sonication condition is too harsh.	Conduct a sonication time course to find a minimum output/duration to achieve appropriate sonication.
4. No product or very little product in the input PCR reactions.	Not enough DNA added to the PCR reaction or conditions are not optimal. PCR amplified region may span nucleosome-free region. Not enough chromatin added to the IP or chromatin is over-sonicated	Add more DNA to the PCR reaction or increase the number of amplification cycles. Optimize the PCR conditions for experimental primer set using purified DNA from cross-linked and sonicated chromatin. For optimal ChIP results add 5-10 µg chromatin per IP. See recommendations for problems 1 and 3 above.
5. No product in the positive control Histone H3-IP RPL30 PCR reaction.	Not enough chromatin or antibody added to the IP reaction or IP incubation time is too short. Incomplete elution of chromatin from Protein G beads.	Be sure to add 5-10 µg of chromatin and 10 µl of antibody to each IP reaction and incubate with antibody over-night and an additional 2 hr after adding Protein G beads. Elution of chromatin from Protein G beads is optimal at 65°C with frequent mixing to keep beads suspended in solution.
6. Quantity of product in the negative control Rabbit IgG-IP and positive control Histone H3-IP PCR reactions is equivalent.	Too much or not enough chromatin added to the IP reaction. Alternatively, too much antibody added to the IP reaction. Too much DNA added to the PCR reaction or too many cycles of amplification.	Add no more than 15 µg of chromatin and 10 µl of histone H3 antibody to each IP reaction. Reduce the amount of normal rabbit IgG to 1 µl per IP. Add less DNA to the PCR reaction or decrease the number of PCR cycles. It is very important that the PCR products are analyzed within the linear amplification phase of PCR. Otherwise, the differences in quantities of starting DNA cannot be accurately measured.
7. No product in the Experimental Antibody-IP PCR reaction.	Not enough DNA added to the PCR reaction. Not enough antibody added to the IP reaction. Antibody does not work for IP.	Add more DNA to the PCR reaction or increase the number of amplification cycles. Typically a range of 1 to 5 µg of antibody is added to the IP reaction; however, the exact amount depends greatly on the individual antibody. Increase the amount of antibody added to the IP. Find an alternate antibody source.