

#5617 Store at -20°C

Phospho-ARHGAP42 (Tyr376) (D45E9) Rabbit mAb



Orders ■ 877-616-CELL (2355)
orders@cellsignaling.com

Support ■ 877-678-TECH (8324)
info@cellsignaling.com

Web ■ www.cellsignaling.com

rev. 02/03/16

For Research Use Only. Not For Use In Diagnostic Procedures.

Applications W, IP Endogenous	Species Cross-Reactivity* H, M, Mk, (R)	Molecular Wt. 125 kDa	Isotype Rabbit IgG**
-------------------------------------	--	--------------------------	-------------------------

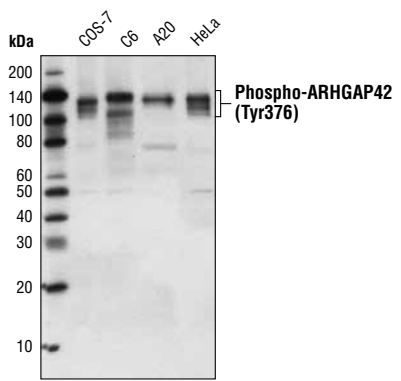
Background: ARHGAP family members activate Rho GTPase proteins (1). Mutations of ARHGAP family genes lead to carcinogenesis through the dysregulation of Rho/Rac/Cdc42-like GTPases (2). Little is known about the biological function of ARHGAP42, a member of the ARHGAP family. ARHGAP42 contains a RhoGAP domain in the middle of its sequence, an SH3 binding domain at the C-terminal end of the protein sequence, as well as a BAR domain and a PH domain in the N-terminal region of the sequence, which indicate that the protein may function as GTPase activator and cytoskeletal adaptor.

Specificity/Sensitivity: Phospho-ARHGAP42 (Tyr376) (D45E9) Rabbit mAb detects endogenous levels of ARHGAP42 only when phosphorylated at Tyr376.

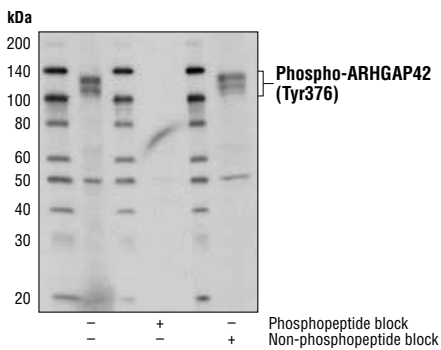
Source/Purification: Monoclonal antibody is produced by immunizing animals with a synthetic phosphopeptide corresponding to residues surrounding Tyr376 of human ARHGAP42 protein.

Background References:

- (1) Katoh, M. and Katoh, M. (2004) *Int J Mol Med* 14, 333-8.
- (2) Katoh, M. and Katoh, M. (2004) *Int J Oncol* 25, 1201-6.



Western blot analysis of extracts from various cell lines using Phospho-ARHGAP42 (Tyr376) (D45E9) Rabbit mAb.



Western blot analysis of extracts from COS-7 cells using Phospho-ARHGAP42 (Tyr376) (D45E9) Rabbit mAb. The phospho-specificity of the antibody was verified by preincubating the antibody with no peptide, phosphopeptide, or the corresponding non-phosphopeptide prior to incubating the membrane.

Entrez-Gene ID #143872
Swiss-Prot Acc. #A6N128

Storage: Supplied in 10 mM sodium HEPES (pH 7.5), 150 mM NaCl, 100 µg/ml BSA, 50% glycerol and less than 0.02% sodium azide. Store at -20°C. Do not aliquot the antibody.

***Species cross-reactivity is determined by western blot.**

****Anti-rabbit secondary antibodies must be used to detect this antibody.**

Recommended Antibody Dilutions:

Western blotting	1:1000
Immunoprecipitation	1:100

For application specific protocols please see the web page for this product at www.cellsignaling.com.

Please visit www.cellsignaling.com for a complete listing of recommended companion products.

IMPORTANT: For western blots, incubate membrane with diluted antibody in 5% w/v BSA, 1X TBS, 0.1% Tween-20 at 4°C with gentle shaking, overnight.

© 2011 Cell Signaling Technology, Inc. Cell Signaling Technology® is a trademark of Cell Signaling Technology, Inc.

Applications Key: W—Western IP—Immunoprecipitation IHC—Immunohistochemistry ChIP—Chromatin Immunoprecipitation IF—Immunofluorescence F—Flow cytometry E-P—ELISA—Peptide
Species Cross-Reactivity Key: H—human M—mouse R—rat Hm—hamster Mk—monkey Mi—mink C—chicken Dm—D. melanogaster X—Xenopus Z—zebrafish B—bovine
 Dg—dog Pg—pig Sc—S. cerevisiae Ce—C. elegans Hr—horse All—all species expected Species enclosed in parentheses are predicted to react based on 100% homology.