

Store at
-20°C

Mouse Brain Tissue Control Extracts



#55330

100 µl

Support: +1-978-867-2388 (U.S.)
www.cellsignal.com/support

Orders: 877-616-2355 (U.S.)
orders@cellsignal.com

New 12/15

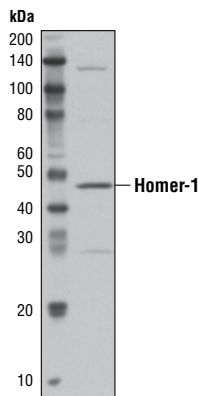
For Research Use Only. Not For Use In Diagnostic Procedures.

Description: The extract is prepared from whole brain tissue of adult mice, and is intended for use as a positive control in western blotting applications. The protein concentration is 2 mg/ml.

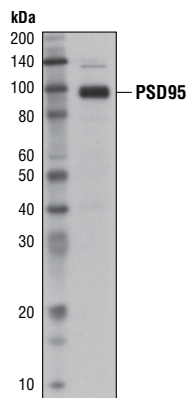
The extract was prepared from whole tissue by homogenization in 1X RIPA buffer (#9806, 10X) (20 mM Tris-HCl pH 7.5, 150 mM NaCl, 1% NP-40, 1% sodium deoxycholate, 1 mM sodium EDTA, 1 mM EGTA, 1 µg/ml leupeptin, 1 mM β-glycerophosphate, 1 mM sodium orthovanadate, 2.5 mM sodium pyrophosphate, 1 mM PMSF (#8553, 34.84 mg), 1X Protease/Phosphatase Inhibitor Cocktail (#5872, 100X).

The extract was subsequently sonicated and insoluble cell debris removed by centrifugation. The extract was then boiled for 5 min in 1X SDS sample buffer + DTT (#7722, Blue Loading Buffer Pack) (62.5 mM Tris-HCl pH 6.8, 10% glycerol, 2% SDS, 0.01% bromophenol blue, 42 mM DTT) to denature the proteins.

Directions for Use: CST recommends loading 10-20 µl extract per mini-gel lane. Boil for 2 minutes prior to use.



Western blot analysis of Mouse Brain Tissue Control Extracts, using Homer1 Antibody #8231.



Western blot analysis of Mouse Brain Tissue Control Extracts, using PSD95 (D74D3) XP® Rabbit mAb #3409.

Storage: Supplied in SDS Sample Buffer. Store at -20°C, or at -80°C for long-term storage.

For product specific protocols and a complete listing of recommended companion products please see the product web page at www.cellsignal.com

Thank you for your recent purchase. If you would like to provide a review visit cellsignal.com/comments.

www.cellsignal.com

© 2015 Cell Signaling Technology, Inc.

XP and Cell Signaling Technology are trademarks of Cell Signaling Technology, Inc.

Applications: W—Western IP—Immunoprecipitation IHC—Immunohistochemistry ChIP—Chromatin Immunoprecipitation IF—Immunofluorescence F—Flow cytometry E-P—ELISA-Peptide **Species Cross-Reactivity:** H—human M—mouse R—rat Hm—hamster Mk—monkey Mi—mink C—chicken Dm—D. melanogaster X—Xenopus Z—zebrafish B—bovine Dg—dog Pg—pig Sc—S. cerevisiae Ce—C. elegans Hr—Horse All—all species expected Species enclosed in parentheses are predicted to react based on 100% homology.