

Mouse (MOPC-21) mAb IgG1 Isotype Control (Alexa Fluor® 488 Conjugate)



Orders ■ 877-616-CELL (2355)
orders@cellsignal.com

Support ■ 877-678-TECH (8324)
info@cellsignal.com

Web ■ www.cellsignal.com

rev. 01/25/16

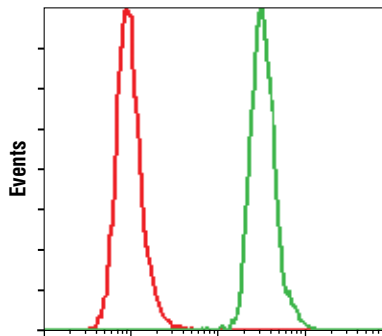
For Research Use Only. Not For Use In Diagnostic Procedures.

Concentration	Applications	Isotype
100 µg/ml	F	Mouse IgG1

Description: This Cell Signaling Technology antibody is conjugated to Alexa Fluor® 488 fluorescent dye under optimal conditions and tested in-house for direct flow cytometric analysis of human cells.

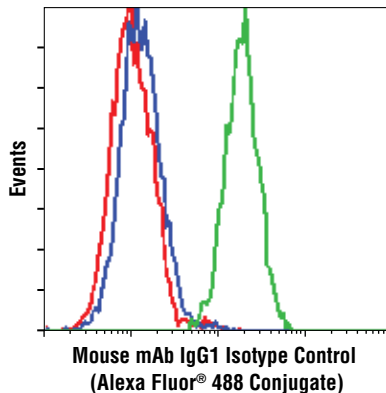
Background: Isotype control antibodies are used to estimate the non-specific binding of target primary antibodies due to F_c receptor binding or other protein-protein interactions. An isotype control antibody should have the same immunoglobulin type as the test antibody.

Specificity/Sensitivity: The antibody is not directed against any known antigen. It functions as an isotype control for mouse monoclonal antibodies. This antibody was conjugated to Alexa Fluor® 488 under optimal conditions with an F/P ratio of 2-6.



Mouse mAb IgG1 Isotype Control
(Alexa Fluor® 488 Conjugate)

Flow cytometric analysis of untreated Jurkat cells using Mouse (MOPC-21) mAb IgG1 Isotype control (Alexa Fluor® 488 Conjugate) (red) compared to Akt (5G3) Mouse mAb (Alexa Fluor® 488 Conjugate) #2917 (green).



Mouse mAb IgG1 Isotype Control
(Alexa Fluor® 488 Conjugate)

Flow cytometric analysis of U0126-treated Jurkat cells using Mouse (MOPC-21) mAb IgG1 Isotype Control (Alexa Fluor® 488 Conjugate) (red) compared to Phospho-p44/42 MAPK (Erk1/2) (Thr202/Tyr204) (E10) Mouse mAb (Alexa Fluor® 488 Conjugate) #4374, U0126-treated (blue) or PMA-treated (green).

Storage: Supplied in PBS (pH 7.2), less than 0.1% sodium azide, 2 mg/ml BSA. Store at 4°C. *Protect from light. Do not freeze.*

Note: This control antibody must be diluted to the same concentration (not dilution) as the specific antibody in analysis. See Directions on Use.

Recommended Antibody Dilutions:

Flow Cytometry
Match IgG concentration of primary antibody

Directions for Use: Important: Dilute this control antibody to the same concentration (not dilution) as specific antibody in analysis. Higher background fluorescence may result if excessive amounts of mouse IgG isotype control is used. Do not use this antibody at 1:50 dilution like other CST Alexa Fluor® conjugated antibodies.

For application specific protocols please see the web page for this product at www.cellsignal.com.

Please visit www.cellsignal.com for a complete listing of recommended companion products.

The Alexa Fluor® dye antibody conjugates in this product are sold under license from Molecular Probes, Inc., for research use only, except for use in combination with DNA microarrays. The Alexa Fluor® dyes (except for Alexa Fluor® 430 dye) are covered by pending and issued patents.

Alexa Fluor® is a registered trademark of Molecular Probes, Inc.