

IκBα (44D4) Rabbit mAb



Orders ■ 877-616-CELL (2355)
orders@cellsignal.com

Support ■ 877-678-TECH (8324)
info@cellsignal.com

Web ■ www.cellsignal.com

rev. 01/25/16

For Research Use Only. Not For Use In Diagnostic Procedures.

Entrez-Gene ID # 4792
UniProt ID # P25963

Applications	Species Cross-Reactivity*	Molecular Wt.	Isotype
W, IP Endogenous	H, M, R, Mk, Mi, Hm	39 kDa	Rabbit IgG**

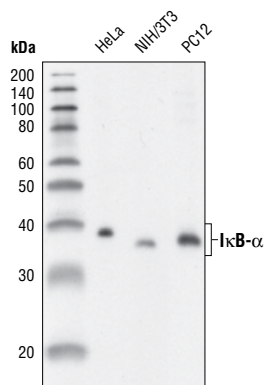
Background: The NF-κB/Rel transcription factors are present in the cytosol in an inactive state complexed with the inhibitory IκB proteins (1-3). Activation occurs via phosphorylation of IκBα at Ser32 and Ser36 followed by proteasome-mediated degradation that results in the release and nuclear translocation of active NF-κB (3-7). IκBα phosphorylation and resulting Rel-dependent transcription are activated by a highly diverse group of extracellular signals including inflammatory cytokines, growth factors and chemokines. Kinases that phosphorylate IκB at these activating sites have been identified (8).

Specificity/Sensitivity: IκBα (44D4) Rabbit mAb detects endogenous levels of total IκBα protein.

Source/Purification: Monoclonal antibody is produced by immunizing animals with a synthetic peptide corresponding to residues near the carboxy-terminus of human IκBα.

Background References:

- (1) Baeuerle, P.A. and Baltimore, D. (1988) *Science* 242, 540-546.
- (2) Beg, A.A. et al. (1993) *Genes Dev.* 7, 2064-2070.
- (3) Finco, T.S. et al. (1994) *Proc. Natl. Acad. Sci. USA* 91, 11884-11888.
- (4) Brown, K. et al. (1995) *Science* 267, 1485-1488.
- (5) Brockman, J.A. et al. (1995) *Mol. Cell. Biol.* 15, 2809-2818.
- (6) Traenckner, E.B. et al. (1995) *EMBO J.* 14, 2876-2883.
- (7) Chen, Z.J. et al. (1996) *Cell* 84, 853-862.
- (8) Karin, M. and Ben-Neriah, Y. (2000) *Annu. Rev. Immunol.* 18, 621-663.



Western blot analysis of extracts from HeLa, NIH/3T3 and PC12 cells, using IκappaB-alpha (44D4) Rabbit mAb.

Storage: Supplied in 10 mM sodium HEPES (pH 7.5), 150 mM NaCl, 100 μg/ml BSA, 50% glycerol and less than 0.02% sodium azide. Store at -20°C. Do not aliquot the antibody.

*Species cross-reactivity is determined by western blot.

**Anti-rabbit secondary antibodies must be used to detect this antibody.

Recommended Antibody Dilutions:

Western blotting 1:1000
Immunoprecipitation 1:100

For application specific protocols please see the web page for this product at www.cellsignal.com.

Please visit www.cellsignal.com for a complete listing of recommended companion products.

IMPORTANT: For western blots, incubate membrane with diluted antibody in 5% w/v BSA, 1X TBS, 0.1% Tween®20 at 4°C with gentle shaking, overnight.

Tween®20 is a registered trademark of ICI Americas, Inc.

Applications Key: W—Western IP—Immunoprecipitation IHC—Immunohistochemistry ChIP—Chromatin Immunoprecipitation IF—Immunofluorescence F—Flow cytometry E-P—ELISA-Peptide

Species Cross-Reactivity Key: H—human M—mouse R—rat Hm—hamster Mk—monkey Mi—mink C—chicken Dm—D. melanogaster X—Xenopus Z—zebrafish B—bovine

Dg—dog Pg—pig Sc—S. cerevisiae Ce—C. elegans Hr—Horse All—all species expected Species enclosed in parentheses are predicted to react based on 100% homology.