

Store at
-20°C

CAP1 (D2K3J) Rabbit mAb



#47055

Support: +1-978-867-2388 (U.S.)
www.cellsignal.com/supportOrders: 877-616-2355 (U.S.)
orders@cellsignal.comEntrez-Gene ID #10487
UniProt ID #Q01518

New 04/16

For Research Use Only. Not For Use In Diagnostic Procedures.

Applications W Endogenous	Species Cross-Reactivity* H, M, R	Molecular Wt. 56 kDa	Isotype Rabbit IgG**
---------------------------------	--------------------------------------	-------------------------	-------------------------

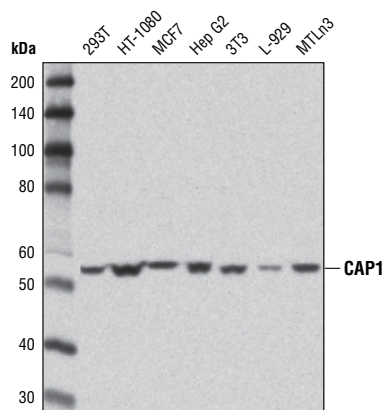
Background: Adenylyl cyclase-associated protein 1 (CAP1) is a widely expressed actin regulatory protein that plays a role in adhesion through its interactions with talin1 and FAK (1). High CAP1 expression is associated with metastasis in hepatocellular carcinoma (2), and esophageal squamous cell carcinoma (3). Research studies also show that CAP1 expression in human epithelial ovarian cancer correlates with proliferation, histological grade, and prognosis (4).

Specificity/Sensitivity: CAP1 (D2K3J) Rabbit mAb recognizes endogenous levels of total CAP1 protein.

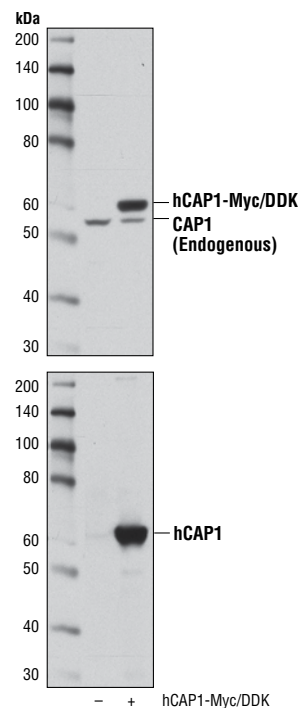
Source/Purification: Monoclonal antibody is produced by immunizing animals with a synthetic peptide corresponding to residues surrounding Val337 of human CAP1 protein.

Background References:

- (1) Zhang, H. et al. (2013) *J Biol Chem* 288, 20966-77.
- (2) Liu, Y. et al. (2014) *Pathol Res Pract* 210, 169-75.
- (3) Li, M. et al. (2013) *Jpn J Clin Oncol* 43, 856-64.
- (4) Hua, M. et al. (2015) *Int J Mol Med* 35, 941-9.



Western blot analysis of extracts from various cell lines using CAP1 (D2K3J) Rabbit mAb.



Western blot analysis of extracts from 293T cells, mock transfected or transfected with full-length human CAP1 (hCAP1), using CAP1 (D2K3J) Rabbit mAb (upper) or Myc-Tag (71D10) Rabbit mAb #2278 (lower).

Storage: Supplied in 10 mM sodium HEPES (pH 7.5), 150 mM NaCl, 100 µg/ml BSA, 50% glycerol and less than 0.02% sodium azide. Store at -20°C. Do not aliquot the antibody.

*Species cross-reactivity is determined by western blot.

**Anti-rabbit secondary antibodies must be used to detect this antibody.

Recommended Antibody Dilutions:

Western blotting 1:1000

For product specific protocols and a complete listing of recommended companion products please see the product web page at www.cellsignal.com

Tween is a registered trademark of ICI Americas, Inc.

IMPORTANT: For western blots, incubate membrane with diluted antibody in 5% w/v nonfat dry milk, 1X TBS, 0.1% Tween®20 at 4°C with gentle shaking, overnight.

Thank you for your recent purchase. If you would like to provide a review visit cellsignal.com/comments.

www.cellsignal.com

© 2016 Cell Signaling Technology, Inc.

Cell Signaling Technology is a trademark of Cell Signaling Technology, Inc.

Applications: W—Western IP—Immunoprecipitation IHC—Immunohistochemistry ChIP—Chromatin Immunoprecipitation IF—Immunofluorescence F—Flow cytometry E-P—ELISA-Peptide Species Cross-Reactivity: H—human M—mouse R—rat Hm—hamster Mk—monkey Mi—mink C—chicken Dm—D. melanogaster X—Xenopus Z—zebrafish B—bovine Dg—dog Pg—pig Sc—S. cerevisiae Ce—C. elegans Hr—Horse All—all species expected Species enclosed in parentheses are predicted to react based on 100% homology.