

AFP (D12C1) Rabbit mAb

Orders ■ 877-616-CELL (2355)
orders@cellsignal.com

Support ■ 877-678-TECH (8324)
info@cellsignal.com

Web ■ www.cellsignal.com

rev. 01/22/16

For Research Use Only. Not For Use In Diagnostic Procedures.

Applications W, IP Endogenous	Species Cross-Reactivity* H, (Mk)	Molecular Wt. 65 kDa	Isotype Rabbit IgG**
-------------------------------------	--------------------------------------	-------------------------	-------------------------

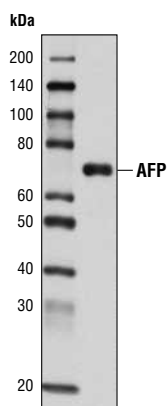
Background: Alpha-fetoprotein (AFP) is a 65 kDa glycoprotein found in the serum of the mammalian fetal liver, yolk sac, and GI tract. While AFP expression in adult cells is low, it is aberrantly expressed in adult liver cancer cells (1,2). The tumor suppressor gene p53 and β -catenin are both involved in the regulation of AFP expression. In normal adult cells, p53 binds to the repressor region of the AFP gene, thereby blocking transcription. Mutations in both p53 and β -catenin are associated with aberrant expression of AFP. Elevated serum levels are predictive of hepatocellular carcinoma (3).

Specificity/Sensitivity: AFP (D12C1) Rabbit mAb recognizes endogenous levels of total AFP protein.

Source/Purification: Monoclonal antibody is produced by immunizing animals with a synthetic peptide corresponding to residues near the carboxy terminus of human AFP protein.

Background References:

- (1) Meier, V. et al. (2006) *Comp Hepatol* 5, 2.
- (2) Warnes, T.W. and Smith, A. (1987) *Baillieres Clin Gastroenterol* 1, 63-89.
- (3) Peng, S.Y. et al. (2004) *Int J Cancer* 112, 44-50.



Western blot analysis of extracts from Hep G2 cells using AFP (D12C1) Rabbit mAb.

Entrez-Gene ID #174
Swiss-Prot Acc. #P02771

Storage: Supplied in 10 mM sodium HEPES (pH 7.5), 150 mM NaCl, 100 μ g/ml BSA, 50% glycerol and less than 0.02% sodium azide. Store at -20°C. Do not aliquot the antibody.

*Species cross-reactivity is determined by western blot.

**Anti-rabbit secondary antibodies must be used to detect this antibody.

Recommended Antibody Dilutions:

Western blotting	1:1000
Immunoprecipitation	1:100

For application specific protocols please see the web page for this product at www.cellsignal.com.

Please visit www.cellsignal.com for a complete listing of recommended companion products.

IMPORTANT: For western blots, incubate membrane with diluted antibody in 5% w/v BSA, 1X TBS, 0.1% Tween-20 at 4°C with gentle shaking, overnight.

Applications Key: W—Western IP—Immunoprecipitation IHC—Immunohistochemistry ChIP—Chromatin Immunoprecipitation IF—Immunofluorescence F—Flow cytometry E-P—ELISA-Peptide
Species Cross-Reactivity Key: H—human M—mouse R—rat Hm—hamster Mk—monkey Mi—mink C—chicken Dm—D. melanogaster X—Xenopus Z—zebrafish B—bovine
Dg—dog Pg—pig Sc—S. cerevisiae Ce—C. elegans Hr—horse All—all species expected Species enclosed in parentheses are predicted to react based on 100% homology.