

# Anti-Rat IgG (H+L), (Alexa Fluor® 555 Conjugate)

✓ 250 µl

**Orders** ■ 877-616-CELL (2355)  
orders@cellsignal.com

**Support** ■ 877-678-TECH (8324)  
info@cellsignal.com

**Web** ■ www.cellsignal.com

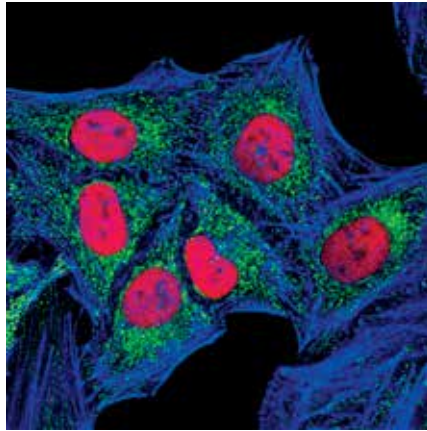
rev. 01/21/16

**For Research Use Only. Not For Use In Diagnostic Procedures.**

**Description:** Anti-rat IgG (H+L) antibody was conjugated to Alexa Fluor® 555 fluorescent dye under optimal conditions and formulated at 2 mg/mL.

**Background:** This product has been optimized for use as a secondary antibody in immunofluorescent applications. Fluorescent anti-species IgG conjugates are ideal for flow cytometry and immunofluorescence. Cell Signaling Technology's strict quality control procedures assure that each conjugate provides optimal specificity and fluorescence.

**Specificity/Sensitivity:** IgG is prepared from goat antibodies that have been adsorbed against mouse IgG, mouse serum and human serum.



*Confocal immunofluorescent analysis of HeLa cells using RPA32 (4E4) Rat mAb #2208 detected with Anti-Rat IgG (H+L) (Alexa Fluor® 555 Conjugate) (red) and COX IV (3E11) Rabbit mAb #4850 detected with Anti-Rabbit IgG (H+L), F(ab')<sub>2</sub> Fragment (Alexa Fluor® 488 Conjugate) #4412 (green). Actin filaments have been labeled with Alexa Fluor® 647 phalloidin (blue).*

**Storage:** Supplied in 0.1 M sodium phosphate, 0.1 M sodium chloride, pH 7.5, 5 mM sodium azide. Store at 4°C. *Do not aliquot the antibody. Protect from light. Do not freeze.*

**Directions for Use:** The optimal dilution of the anti-species antibody should be determined for each primary antibody by titration. However, a final dilution of 1:250 - 1:1000 should yield acceptable results for immunofluorescent assays.

**For product specific protocols and a complete listing of recommended companion products please see the product web page at [www.cellsignal.com](http://www.cellsignal.com)**