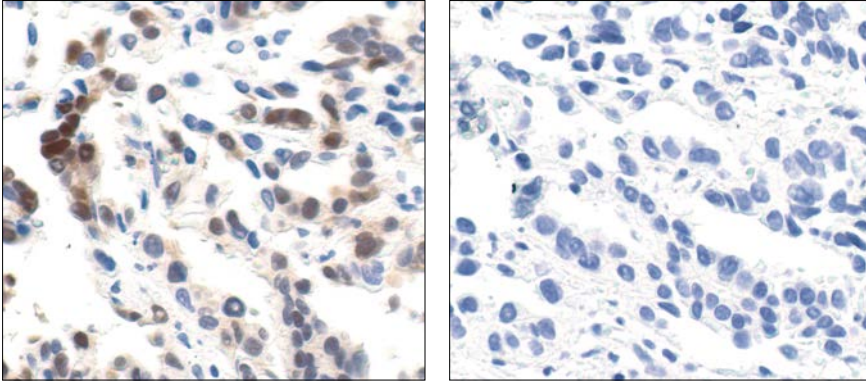
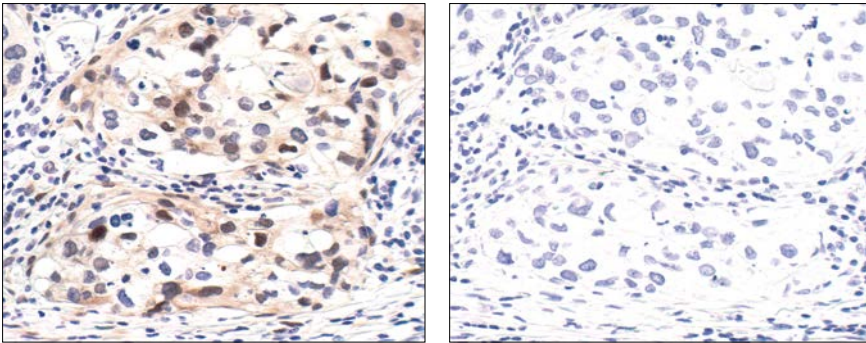


Immunohistochemical analysis of MDA-MB-453 cells, untreated, EGF-treated or EGF/Tarceva-treated, using Phospho-p44/42 MAPK (Erk1/2) (Thr202/Tyr204) (20G11) Rabbit mAb.



Immunohistochemical analysis of paraffin-embedded human lung carcinoma, untreated or  $\lambda$  phosphatase-treated (right), using Phospho-p44/42 MAPK (Erk1/2) (Thr202/Tyr204) (20G11) Rabbit mAb.



Immunohistochemical analysis of paraffin-embedded human prostate tumor, using Phospho-p44/42 MAPK (Erk1/2) (Thr202/Tyr204) (20G11) Rabbit mAb (left) or the same antibody pre-incubated with Phospho-p44/42 MAPK (Erk1/2) (Thr202/Tyr204) Blocking Peptide #1150 (right).