

Store at
-20°C

E-Tag (D1U2Q) Rabbit mAb



#41729

Support: +1-978-867-2388 (U.S.)
www.cellsignal.com/supportOrders: 877-616-2355 (U.S.)
orders@cellsignal.com

New 02/19

For Research Use Only. Not For Use In Diagnostic Procedures.**Applications**
W, IP
Transfected only**Species Cross-Reactivity***
All**Isotype**
Rabbit IgG**

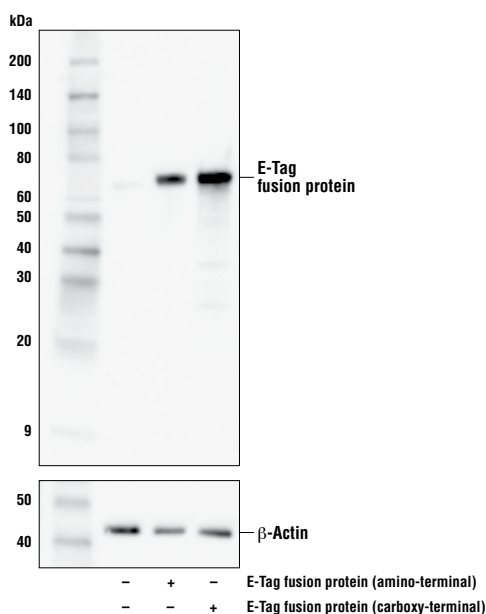
Background: Epitope tags are useful for the labeling and detection of proteins using immunoblotting, immunoprecipitation, and immunostaining techniques. Because of their small size, they are unlikely to affect the tagged protein's biochemical properties. E-tag is an epitope tag composed of a 13 residue peptide. This peptide can be expressed and detected with the protein of interest as an amino-terminal or carboxy-terminal fusion (1,2).

Background References:

- (1) Leotoing, L. et al. (2011) *J Biol Chem* 286, 32277-88.
- (2) Chen, T.T. et al. (2010) *J Cell Biol* 188, 595-609.

Specificity/Sensitivity: E-Tag (D1U2Q) Rabbit mAb recognizes transfected levels of recombinant proteins containing an E-tag.

Source/Purification: Monoclonal antibody is produced by immunizing animals with a synthetic E-tag peptide.



Western blot analysis of extracts from 293T cells, untransfected (-) or transfected with amino-terminal or carboxy-terminal E-tag fusion protein (+), using E-Tag (D1U2Q) Rabbit mAb (upper) and β -Actin (D6A8) Rabbit mAb #8457 (lower).

Storage: Supplied in 10 mM sodium HEPES (pH 7.5), 150 mM NaCl, 100 μ g/ml BSA, 50% glycerol and less than 0.02% sodium azide. Store at -20°C . Do not aliquot the antibody.

***Species cross-reactivity is determined by western blot.**

****Anti-rabbit secondary antibodies must be used to detect this antibody.**

Recommended Antibody Dilutions:

| | |
|---------------------|--------|
| Western blotting | 1:1000 |
| Immunoprecipitation | 1:50 |

For product specific protocols and a complete listing of recommended companion products please see the product web page at www.cellsignal.com.

Tween is a registered trademark of ICI Americas, Inc.

IMPORTANT: For western blots, incubate membrane with diluted antibody in 5% w/v BSA, 1X TBS, 0.1% Tween[®]20 at 4°C with gentle shaking, overnight.

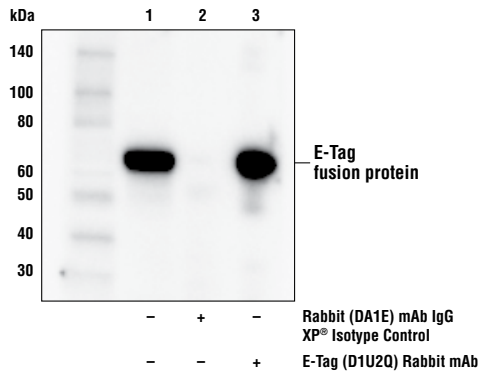
Thank you for your recent purchase. If you would like to provide a review visit cellsignal.com/comments.

www.cellsignal.com

© 2019 Cell Signaling Technology, Inc.

XP and Cell Signaling Technology are trademarks of Cell Signaling Technology, Inc.

Applications: W—Western IP—Immunoprecipitation IHC—Immunohistochemistry ChIP—Chromatin Immunoprecipitation IF—Immunofluorescence F—Flow cytometry E-P—ELISA-Peptide **Species Cross-Reactivity:** H—human M—mouse R—rat Hm—hamster Mk—monkey Mi—mink C—chicken Dm—D. melanogaster X—Xenopus Z—zebrafish B—bovine Dg—dog Pg—pig Sc—S. cerevisiae Ce—C. elegans Hr—Horse All—all species expected Species enclosed in parentheses are predicted to react based on 100% homology.



Immunoprecipitation of transfected E-tag fusion protein from 293T cell extracts. Lane 1 is 10% input, lane 2 is Rabbit (DA1E) mAb IgG XP® Isotype Control #3900, and lane 3 is E-Tag (D1U2Q) Rabbit mAb. Western blot analysis was performed using E-Tag (D1U2Q) Rabbit mAb as the primary antibody and Mouse Anti-Rabbit IgG (Light-Chain Specific) (D4W3E) mAb (HRP Conjugate) #93702 as the secondary antibody.

Thank you for your recent purchase. If you would like to provide a review visit [cellsignal.com/comments](https://www.cellsignal.com/comments).

www.cellsignal.com