

Store at
-20°C

MAFB Antibody

#41019

Support: +1-978-867-2388 (U.S.)
www.cellsignal.com/supportOrders: 877-616-2355 (U.S.)
orders@cellsignal.comEntrez-Gene ID #9935
UniProt ID #Q9Y5Q3

New 01/19

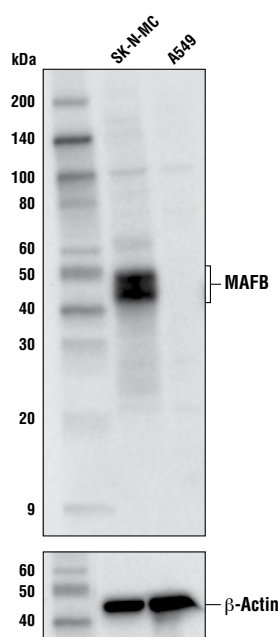
For Research Use Only. Not For Use In Diagnostic Procedures.

Applications W, IP Endogenous	Species Cross-Reactivity* H	Molecular Wt. 46, 48 kDa	Source Rabbit**
-------------------------------------	--------------------------------	-----------------------------	--------------------

Background: MAFB belongs to the musculoaponeurotic fibrosarcoma (MAF) family of basic leucine-zipper transcription factors (1). In mouse embryo, MAFB expression is first detected at E10.5 (2, 3). Early in development, MAFB drives differentiation of both glucagon-producing α -cells and insulin-producing β -cells in the pancreas, but later plays a more decisive role in the maturation and maintenance of functional α -cells (4, 5). Consistent with MAFB playing a critical role in mature α -cells, MAFB is enriched in α -cells within 2 weeks of birth in the pancreas (6). Glucagon and insulin secretion is tightly regulated, and imbalances in these hormones contribute to metabolic conditions. Therefore, understanding the role of MAFB in α -cell development, maintenance, and physiological function may contribute to developing deeper insights into how these cells contribute to metabolic diseases like diabetes. MAFB also regulates monocyte differentiation, indicating MAFB functions beyond the pancreas (7).

Specificity/Sensitivity: MAFB Antibody recognizes endogenous levels of total MAFB protein. Based on sequence similarity, this antibody is not predicted to cross-react with MAFA.

Source/Purification: Polyclonal antibodies are produced by immunizing animals with a synthetic peptide corresponding to residues surrounding of human Pro188 protein. Antibodies are purified by protein A and peptide affinity chromatography.



Western blot analysis of SK-N-MC and A549 cell extracts using MAFB Antibody (upper) and β -Actin (D6A8) Rabbit mAb #8457 (lower).

Storage: Supplied in 10 mM sodium HEPES (pH 7.5), 150 mM NaCl, 100 μ g/ml BSA and 50% glycerol. Store at -20°C . Do not aliquot the antibody.

*Species cross-reactivity is determined by western blot.

**Anti-rabbit secondary antibodies must be used to detect this antibody.

Recommended Antibody Dilutions:

Western blotting	1:1000
Immunoprecipitation	1:50

For product specific protocols and a complete listing of recommended companion products please see the product web page at www.cellsignal.com.

Background References:

- (1) Hang, Y. and Stein, R. (2011) *Trends Endocrinol Metab* 22, 364-73.
- (2) Nishimura, W. et al. (2006) *Dev Biol* 293, 526-39.
- (3) Artner, I. et al. (2006) *Diabetes* 55, 297-304.
- (4) Katoh, M.C. et al. (2018) *Mol Cell Biol* 38.
- (5) Artner, I. et al. (2007) *Proc Natl Acad Sci U S A* 104, 3853-8.
- (6) Artner, I. et al. (2010) *Diabetes* 59, 2530-9.
- (7) Wu, X. et al. (2016) *J Exp Med* 213, 2553-65.

Tween is a registered trademark of ICI Americas, Inc.

IMPORTANT: For western blots, incubate membrane with diluted antibody in 5% w/v BSA, 1X TBS, 0.1% Tween[®]20 at 4°C with gentle shaking, overnight.

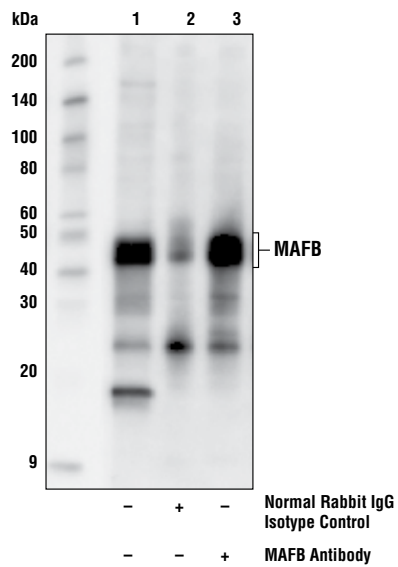
Thank you for your recent purchase. If you would like to provide a review visit cellsignal.com/comments.

www.cellsignal.com

© 2019 Cell Signaling Technology, Inc.

Cell Signaling Technology is a trademark of Cell Signaling Technology, Inc.

Applications: W—Western IP—Immunoprecipitation IHC—Immunohistochemistry ChIP—Chromatin Immunoprecipitation IF—Immunofluorescence F—Flow cytometry E-P—ELISA-Peptide Species Cross-Reactivity: H—human M—mouse R—rat Hm—hamster Mk—monkey Mi—mink C—chicken Dm—D. melanogaster X—Xenopus Z—zebrafish B—bovine Dg—dog Pg—pig Sc—S. cerevisiae Ce—C. elegans Hr—Horse All—all species expected Species enclosed in parentheses are predicted to react based on 100% homology.



Immunoprecipitation of MAFB from SK-N-MC cell extracts. Lane 1 is 10% input, lane 2 is Normal Rabbit IgG #2729, and lane 3 is MAFB Antibody. Western blot analysis was performed using MAFB Antibody.

Thank you for your recent purchase. If you would like to provide a review visit [cellsignal.com/comments](https://www.cellsignal.com/comments).

www.cellsignal.com