

Store at
4°C

FastScan™ Phospho-Stat1 (Tyr701) ELISA Kit



#40716

1 Kit
(96 assays)Support: +1-978-867-2388 (U.S.)
www.cellsignal.com/supportOrders: 877-616-2355 (U.S.)
orders@cellsignal.comEntrez-Gene ID #6772
UniProt ID #P42224

rev. 11/14/19

For Research Use Only. Not For Use In Diagnostic Procedures.**Species Cross-Reactivity:** H

Description: The FastScan™ Phospho-Stat1 (Tyr701) ELISA Kit is a sandwich enzyme-linked immunosorbent assay (ELISA) that detects endogenous levels of Stat1 when phosphorylated at Tyr701. To perform the assay, sample is incubated with a capture antibody conjugated with a proprietary tag and a second detection antibody linked to HRP, forming a sandwich with phospho-Stat1 (Tyr701) in solution. This entire complex is immobilized to the plate via an anti-tag antibody. The wells are then washed to remove unbound material. TMB is then added. The magnitude of observed signal is proportional to the quantity of phospho-Stat1 (Tyr701).

*Antibodies in kit are custom formulations specific to kit.

Specificity/Sensitivity: The FastScan™ Phospho-Stat1 (Tyr701) ELISA Kit detects endogenous levels of Stat1 when phosphorylated at Tyr701 as shown in Figure 1. This kit detects proteins from the indicated species, as determined through in-house testing, but may also detect homologous proteins from other species.

Background: The Stat1 transcription factor is activated in response to a large number of ligands (1) and is essential for responsiveness to IFN- α and IFN- γ (2,3). Phosphorylation of Stat1 at Tyr701 induces Stat1 dimerization, nuclear translocation, and DNA binding (4). Stat1 protein exists as a pair of isoforms, Stat1 α (91 kDa) and the splice variant Stat1 β (84 kDa). In most cells, both isoforms are activated by IFN- α , but only Stat1 α is activated by IFN- γ . The inappropriate activation of Stat1 occurs in many tumors (5). In addition to tyrosine phosphorylation, Stat1 is also phosphorylated at Ser727 through a p38 mitogen-activated protein kinase (MAPK)-dependent pathway in response to IFN- α and other cellular stresses (6). Serine phosphorylation may be required for the maximal induction of Stat1-mediated gene activation.

Product Includes	Item #	Kit Quantity	Color
FastScan™ ELISA Microwell Strip Plate*	53257	96 tests	
Stat1 Rabbit Capture mAb	58060	1 each	Green (Lyophilized)
Phospho-Stat1 (Tyr701) Rabbit HRP-linked mAb	73718	1 each	Red (Lyophilized)
FastScan™ ELISA Capture Antibody Diluent	16076	3 ml	Green
FastScan™ ELISA HRP Antibody Diluent	28120	3 ml	
TMB Substrate	7004	11 ml	
STOP Solution	7002	11 ml	
Sealing Tape	54503	1 each	
ELISA Wash Buffer (20X)	9801	25 ml	
FastScan™ ELISA Cell Extraction Buffer (5X)	69905	10 ml	
FastScan™ ELISA Cell Extraction Enhancer Solution (50X)	25243	1 ml	
FastScan™ ELISA Kit #40716 Positive Control Type 1	83513	1 each	

* 12 8-well modules – Each module is designed to break apart for 8 tests.

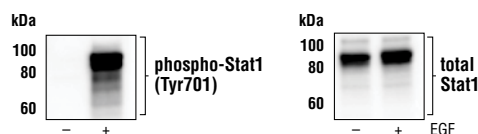
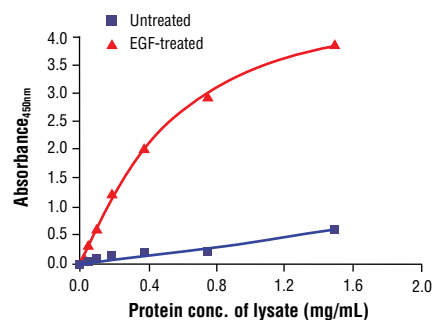


Figure 1. Treatment of A-431 cells with EGF stimulates phosphorylation of Stat1 at Tyr701 but does not effect the level of total Stat1. The relationship between lysate protein concentration from untreated and EGF-treated A-431 cells and the absorbance at 450 nm using the FastScan™ Phospho-Stat1 (Tyr701) ELISA Kit #40716 is shown in the upper figure. The corresponding western blots using phospho-Stat1 (Tyr701) antibody (left panel) and Stat1 antibody (right panel) are shown in the lower figure. After serum starvation, A-431 cells were either left untreated or treated with 100 ng/mL EGF for 5 minutes at 37°C, then lysed.

Background References:

- (1) Heim, M.H. (1999) *J Recept Signal Transduct Res* 19, 75-120.
- (2) Durbin, J.E. et al. (1996) *Cell* 84, 443-50.
- (3) Meraz, M.A. et al. (1996) *Cell* 84, 431-42.
- (4) Ihle, J.N. et al. (1994) *Trends Biochem Sci* 19, 222-7.
- (5) Frank, D.A. (1999) *Mol Med* 5, 432-56.
- (6) Wen, Z. et al. (1995) *Cell* 82, 241-50.

U.S. Patents 7,429,487, 9,086,407, 9,261,500, and 9,476,874, foreign equivalents, and child patents deriving therefrom.

Thank you for your recent purchase. If you would like to provide a review visit cellsignal.com/comments.

www.cellsignal.com

© 2019 Cell Signaling Technology, Inc.

FastScan™ ELISA and Cell Signaling Technology are trademarks of Cell Signaling Technology, Inc.

Applications: W—Western IP—Immunoprecipitation IHC—Immunohistochemistry ChIP—Chromatin Immunoprecipitation IF—Immunofluorescence F—Flow cytometry E-P—ELISA-Peptide Species Cross-Reactivity: H—human M—mouse R—rat Hm—hamster Mk—monkey Mi—mink C—chicken Dm—D. melanogaster X—Xenopus Z—zebrafish B—bovine Dg—dog Pg—pig Sc—S. cerevisiae Ce—C. elegans Hr—Horse All—all species expected Species enclosed in parentheses are predicted to react based on 100% homology.

FastScan™ ELISA Protocol

A Solutions and Reagents

NOTE: Prepare solutions with deionized/purified water or equivalent. Prepare only as much reagent as needed on the day of the experiment.

- FastScan™ ELISA Microwell Strip Plate, 96 well (#53257):** Bring all to room temperature before opening bag/use. Unused microwell strips should be returned to the original re-sealable bag containing the desiccant pack and stored at 4°C.
- 1X ELISA Wash Buffer:** Prepare by diluting ELISA Wash Buffer (20X) (included in each kit) to 1X with deionized water.
- 1X Cell Extraction Buffer:** Prepare by diluting FastScan™ ELISA Cell Extraction Buffer (5X) #69905 and FastScan™ ELISA Cell Extraction Enhancer Solution (50X) #25243* to 1X with deionized water. This buffer can be stored at 4°C for short-term use (1-2 weeks). To make 10 mL 1X Cell Extraction Buffer, combine 7.8 mL deionized water, 2 mL FastScan™ ELISA Cell Extraction Buffer (5X), and 200 µL FastScan™ ELISA Cell Extraction Enhancer Solution (50X). Alternatively, Enhancer Solution may be added to the Cell Extraction Buffer after extraction of cells or tissue. When using the 1X Cell Extraction Buffer as a sample diluent for the assay, it is recommended to equilibrate it to room temperature prior to use.

***IMPORTANT:** The provided FastScan™ ELISA Cell Extraction Enhancer Solution (50X) may precipitate when stored at 4°C. To dissolve, warm briefly at 37°C and mix gently. The FastScan™ ELISA Cell Extraction Enhancer Solution (50X) can be stored at room temperature to avoid precipitation.

NOTE: The 1X Cell Extraction Buffer contains phosphatase inhibitors. Protease inhibitors should be added to the 1X Cell Extraction Buffer immediately prior to lysing cells. Additional phosphatase inhibitors can also be added (e.g. Protease/Phosphatase Inhibitor Cocktail (100X) #5872, not supplied).

- FastScan™ ELISA Capture Antibody Diluent:** Green diluent for reconstitution of the Capture Antibody.
- FastScan™ ELISA HRP Antibody Diluent:** Diluent (amber bottle) for reconstitution of the HRP-linked Antibody. Protect from light.
- 4X Capture Antibody:** Reconstitute lyophilized Capture Antibody (green colored cake) with 3 mL FastScan™ ELISA Capture Antibody Diluent (green diluent). Incubate at room temperature for 5 min with occasional gentle mixing to fully reconstitute. For best results, use immediately following antibody reconstitution. Unused reconstituted 4X Capture Antibody may be stored for up to 4 weeks at 4°C, although there may be some loss of signal compared to freshly reconstituted antibody.
- 4X HRP-linked Antibody:** Reconstitute lyophilized HRP-linked Antibody (red colored cake) with 3 mL FastScan™ ELISA HRP Antibody Diluent. Incubate at room temperature for 5 min with occasional gentle mixing to fully reconstitute. For best results, use immediately following antibody reconstitution. Unused reconstituted 4X HRP-linked Antibody may be stored for up to 4 weeks at 4°C protected from light, although there may be some loss of signal compared to freshly reconstituted antibody.
- Antibody Cocktail:** Combine equal volumes of the reconstituted 4X Capture and 4X HRP-linked Antibodies immediately prior to assay and mix. To make 6 mL of the Antibody Cocktail (enough for 1x 96-well plate), combine 3 mL 4X Capture Antibody with 3 mL 4X HRP-linked Antibody.
- Positive Control:** Reconstitute 1 vial of lyophilized Positive Control (refer to product datasheet or vial label to determine which type of Positive Control is included with the kit):
 - For Positive Control Type 1, add 250 µL deionized water.
 - For Positive Control Type 2, add 500 µL 1X Cell Extraction Buffer.

Mix thoroughly and gently, hold at room temperature for 1 minute and then follow the steps outlined below in the "Test Procedure" section. Positive Controls are recommended to be used immediately after reconstituting, however remaining material may be stored at -80°C (there may be some loss of the positive control signal if freeze/thawed). Positive Controls are supplied as a control reagent, not as an absolute quantitation measure.

NOTE: A select number of FastScan™ ELISA kits do not contain a positive control, please refer to Product Includes table on the datasheet for a list of included reagents. Should you need support on how to generate a positive control for those kits, contact CST technical support at support@cellsignal.com.

- TMB Substrate (#7004):** Bring to room temperature before use.
- STOP Solution (#7002):** Bring to room temperature before use.

B Preparing Cell Lysates

For adherent cells

- Aspirate media when the culture reaches 80–90% confluence.
- Remove media and rinse cells once with ice-cold 1X PBS.
- Remove PBS and add 0.5 mL ice-cold 1X Cell Extraction Buffer (recommended to supplement with protease inhibitors and additional phosphatase inhibitors as needed) to each plate (10 cm diameter) and incubate the plate on ice for 5 min.
- Scrape cells off the plate and transfer to an appropriate tube. Keep on ice.
- Sonicate lysates on ice.
- Microcentrifuge for 5 min (x14,000 rpm) at 4°C and transfer the supernatant to a new tube. The supernatant is the cell lysate. Store at -80°C in single-use aliquots.

For suspension cells

- Remove media by low speed centrifugation (~1200 rpm) when the culture reaches 0.5–1.0 x 10⁶ viable cells/ml.
- Wash once with ice-cold 1X PBS.
- Cells harvested from 50 mL of growth media can be lysed in 2.0 mL of 1X Cell Extraction Buffer (recommended to supplement with protease inhibitors and additional phosphatase inhibitors as needed).
- Sonicate lysates on ice.
- Microcentrifuge for 5 min (x14,000 rpm) at 4°C and transfer the supernatant to a new tube. The supernatant is the cell lysate. Store at -80°C in single-use aliquots.

C Test Procedure

NOTE: Equilibrate all materials and prepared reagents to room temperature prior to running the assay.

- Prepare all reagents as indicated above (Section A).
- Samples should be undiluted or diluted with 1X Cell Extraction Buffer to a 2X protein concentration in order to achieve a final 1X protein concentration upon addition of the antibody cocktail. Individual datasheets for each kit provide a sensitivity curve that serves as a reference for selection of an appropriate starting lysate concentration. The sensitivity curve shows typical results across a range of lysate concentration points.
- Add 50 µL of each sample or Positive Control to the appropriate wells.
- Add 50 µL of the Antibody Cocktail to each well.
- Seal the plate with the supplied sealing tape and incubate for 1 hour at room temperature on a plate shaker set to 400 rpm (moderate agitation).
- Gently remove the tape and wash wells:
 - Discard plate contents into a receptacle.
 - Wash 3 times* with 1X ELISA Wash Buffer, 200 µL each time for every well. After each wash, aspirate or decant from wells. Invert the plate and blot it against clean paper towels to remove the residual solution in each well, but do not allow wells to completely dry at any time.
 - Clean the underside of all wells with a lint-free tissue.

***NOTE:** Certain FastScan™ ELISA Kits may require additional washes at this step. Any requirements for additional washes will be specifically noted in the product "Description" of the kit's datasheet.

- Add 100 µL of TMB Substrate to each well. Seal with tape and incubate the plate in the dark for 15 min at room temperature on a plate shaker (400 rpm, moderate agitation) or alternatively for 10 min at 37°C without shaking.
- Add 100 µL of STOP Solution to each well. Shake gently for a few seconds. *NOTE: Initial color of positive reaction is blue, which changes to yellow upon addition of STOP Solution.*
- Read results:
 - Visual Determination:** Read within 30 min after adding STOP Solution.
 - Spectrophotometric Determination:** Wipe underside of wells with a lint-free tissue. Read absorbance at 450 nm within 30 min after adding STOP Solution.