

# GP130 Antibody

**Orders** ■ 877-616-CELL (2355)  
orders@cellsignal.com

**Support** ■ 877-678-TECH (8324)  
info@cellsignal.com

**Web** ■ www.cellsignal.com

rev. 01/13/16

**For Research Use Only. Not For Use In Diagnostic Procedures.**

Applications W Endogenous	Species Cross-Reactivity* H, M, R, Mk	Molecular Wt. 130 kDa	Source Rabbit**
---------------------------------	--	--------------------------	--------------------

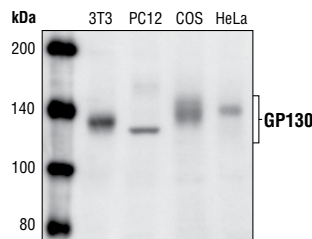
**Background:** GP130 is a signal-transducing subunit shared by the receptors for the IL-6 family of cytokines (1-3). The binding of a ligand to its receptor induces the dimerization of GP130, leading to activation of the Jak tyrosine kinase and to tyrosine phosphorylation of GP130. These events lead to the activation of multiple signal-transduction pathways, such as the Stat, Ras-MAPK and PI3 kinase pathways, whose activation is controlled by distinct regions of GP130 (4-7).

**Specificity/Sensitivity:** GP130 Antibody detects endogenous levels of total GP130 protein independent of phosphorylation.

**Source/Purification:** Polyclonal antibodies are produced by immunizing animals with a synthetic peptide corresponding to the sequence of human GP130. Antibodies are purified by protein A and peptide affinity chromatography.

#### Background References:

- (1) Taga, T. (1996) *J. Neurochem.* 67, 1-10.
- (2) Taga, T. (1997) *Ann. Med.* 29, 63-72.
- (3) Taga, T. and Kishimoto, T. (1997) *Annu. Rev. Immunol.* 15, 797-819.
- (4) Heinrich, P.C. et al. (1998) *Biochem. J.* 334, 297-314.
- (5) Ihle, J.N. et al. (1994) *Trends Biochem. Sci.* 19, 222-227.
- (6) Kurth, I. et al. (1999) *J. Immunol.* 162, 1480-1487.
- (7) Paonessa, G. et al. (1995) *EMBO J.* 14, 1942-1951.



Western blot analysis of extracts from NIH/3T3, PC12, COS and HeLa cells, using GP130 Antibody.

**Entrez-Gene ID** #3572  
**Swiss-Prot Acc.** #P40189

**Storage:** Supplied in 10 mM sodium HEPES (pH 7.5), 150 mM NaCl, 100 µg/ml BSA and 50% glycerol. Store at -20°C. Do not aliquot the antibody.

\*Species cross-reactivity is determined by western blot.

\*\*Anti-rabbit secondary antibodies must be used to detect this antibody.

#### Recommended Antibody Dilutions:

Western Blotting 1:1000

For application specific protocols please see the web page for this product at [www.cellsignal.com](http://www.cellsignal.com).

Please visit [www.cellsignal.com](http://www.cellsignal.com) for a complete listing of recommended companion products.

**IMPORTANT: For western blots, incubate membrane with diluted antibody in 5% w/v BSA, 1X TBS, 0.1% Tween-20 at 4°C with gentle shaking, overnight.**

**Applications Key:** W—Western IP—Immunoprecipitation IHC—Immunohistochemistry ChIP—Chromatin Immunoprecipitation IF—Immunofluorescence F—Flow cytometry E-P—ELISA-Peptide

**Species Cross-Reactivity Key:** H—human M—mouse R—rat Hm—hamster Mk—monkey Mi—mink C—chicken Dm—D. melanogaster X—Xenopus Z—zebrafish B—bovine

Dg—dog Pg—pig Sc—S. cerevisiae Ce—C. elegans Hr—horse

All—all species expected

Species enclosed in parentheses are predicted to react based on 100% homology.