

Store at
-20°C

#34648

Ajuba (D4D8P) Rabbit mAb



Support: +1-978-867-2388 (U.S.)
www.cellsignal.com/support

Orders: 877-616-2355 (U.S.)
orders@cellsignal.com

Entrez-Gene ID #84962
UniProt ID #Q96IF1

New 09/16

For Research Use Only. Not For Use In Diagnostic Procedures.

Applications
W, IP
Endogenous

Species Cross-Reactivity*
H, Mk

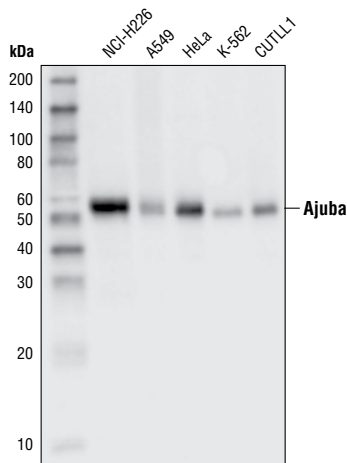
Molecular Wt.
55 kDa

Isotype
Rabbit IgG**

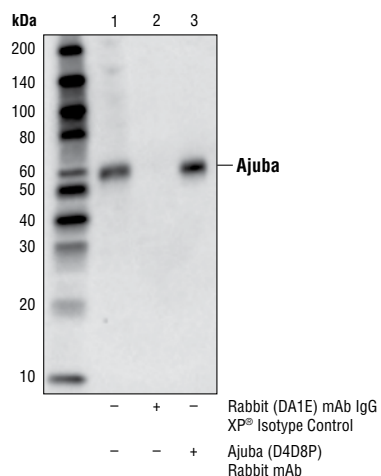
Background: Ajuba belongs to the Zyxin/Ajuba family, members of which include LIMD1, LPP, Trip6 and Zyxin. Three LIM domains at the carboxy-terminus characterize this family of proteins. Zyxin/Ajuba family members associate with the actin cytoskeleton, are components of both cell-cell junction adhesive complex and integrin-mediated adhesive complex, and shuttle in and out of the nucleus (1). Ajuba is involved in Rac activation during cell migration and activates Aurora A in order to commit to mitosis (2-3). Ajuba and its family members also have an amino-terminal proline-rich pre-LIM region, and Ajuba augments ERK activation in a Ras-dependent manner (4).

Specificity/Sensitivity: Ajuba (D4D8P) Rabbit mAb recognizes endogenous levels of total Ajuba protein.

Source/Purification: Monoclonal antibody is produced by immunizing animals with a synthetic peptide corresponding to residues surrounding Arg77 of human Ajuba protein.



Western blot analysis of extracts from various cell lines using Ajuba (D4D8P) Rabbit mAb.



Immunoprecipitation of Ajuba protein from PANC-1 cell extracts. Lane 1 is 10% input, lane 2 is Rabbit (DA1E) mAb XP® Isotype Control #3900, and lane 3 is Ajuba (D4D8P) Rabbit mAb. Western blot analysis was performed using Ajuba (D4D8P) Rabbit mAb.

Storage: Supplied in 10 mM sodium HEPES (pH 7.5), 150 mM NaCl, 100 µg/ml BSA, 50% glycerol and less than 0.02% sodium azide. Store at -20°C. Do not aliquot the antibody.

*Species cross-reactivity is determined by western blot.

**Anti-rabbit secondary antibodies must be used to detect this antibody.

Recommended Antibody Dilutions:

Western blotting 1:1000
Immunoprecipitation 1:50

For product specific protocols and a complete listing of recommended companion products please see the product web page at www.cellsignal.com

Background References:

- (1) Feng, Y. and Longmore, G.D. (2005) *Mol. Cell Biol.* 25, 4010-4022.
- (2) Pratt, S. J. et al. (2005) *J. Cell Biol.* 168, 813-824.
- (3) Hirota, T. et al. (2003) *Cell* 114, 585-598.
- (4) Goyal, R. et al. (1999) *Mol. Cell Biol.* 19, 4379-4389.

Tween is a registered trademark of ICI Americas, Inc.

IMPORTANT: For western blots, incubate membrane with diluted antibody in 5% w/v BSA, 1X TBS, 0.1% Tween®20 at 4°C with gentle shaking, overnight.

Thank you for your recent purchase. If you would like to provide a review visit cellsignal.com/comments.

www.cellsignal.com

© 2016 Cell Signaling Technology, Inc.

XP and Cell Signaling Technology are trademarks of Cell Signaling Technology, Inc.

Applications: W—Western IP—Immunoprecipitation IHC—Immunohistochemistry ChIP—Chromatin Immunoprecipitation IF—Immunofluorescence F—Flow cytometry E-P—ELISA-Peptide Species Cross-Reactivity: H—human M—mouse R—rat Hm—hamster Mk—monkey Mi—mink C—chicken Dm—D. melanogaster X—Xenopus Z—zebrafish B—bovine Dg—dog Pg—pig Sc—S. cerevisiae Ce—C. elegans Hr—Horse All—all species expected Species enclosed in parentheses are predicted to react based on 100% homology.