

# Flotillin-2 (C42A3) Rabbit mAb



**Orders** ■ 877-616-CELL (2355)  
orders@cellsignal.com  
**Support** ■ 877-678-TECH (8324)  
info@cellsignal.com  
**Web** ■ www.cellsignal.com

rev. 04/15/16

**For Research Use Only. Not For Use In Diagnostic Procedures.**

Applications	Species Cross-Reactivity*	Molecular Wt.	Isotype
W, IP Endogenous	H, M, R, Mk	49, 58 kDa	Rabbit IgG**

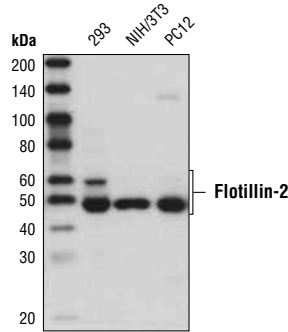
**Background:** Flotillins belong to a family of lipid raft-associated integral membrane proteins that carry a evolutionarily conserved domain called the prohibitin homology domain (PHB) (1). Flotillin members are ubiquitously expressed and located to non-caveolar microdomains (lipid rafts) on the cell plasma membrane where they support signal transduction and regulate lipid raft motility and localization (2-5). Two flotillin members have been described, flotillin-1 and flotillin-2. In addition to its colocalization with lipid rafts on the plasma membrane, flotillin-1 also has been found at compartments of the endocytic and autophagosomal pathways, such as recycling/late endosomes, the Golgi complex, as well as the nucleus (6,7). Flotillin-2 is mainly localized to the plasma membrane and is prevalent in cell-cell contact sites. However, overexpressed flotillin-2 has also been found in the late endosome (4,8,9). Both flotillin-1 and flotillin-2 are commonly used as lipid raft associated markers.

**Specificity/Sensitivity:** Flotillin-2 (C42A3) Rabbit mAb detects endogenous levels of total flotillin-2 protein.

**Source/Purification:** Monoclonal antibody is produced by immunizing animals with a synthetic peptide corresponding to residues surrounding Phe157 of human flotillin-2 protein.

**Background References:**

- (1) Morrow, I.C. and Parton, R.G. (2005) *Traffic* 6, 725-40.
- (2) Langhorst, M.F. et al. (2005) *Cell Mol Life Sci* 62, 2228-40.
- (3) Stuermer, C.A. and Plattner, H. (2005) *Biochem Soc Symp*, 109-18.
- (4) Fernow, I. et al. (2007) *Eur J Cell Biol* 86, 345-52.
- (5) Neumann-Giesen, C. et al. (2007) *J Cell Sci* 120, 395-406.
- (6) Liu, J. et al. (2005) *J Biol Chem* 280, 16125-34.
- (7) Santamaria, A. et al. (2005) *Mol Cell Biol* 25, 1900-11.
- (8) Solomon, S. et al. (2002) *Immunobiology* 205, 108-19.
- (9) Neumann-Giesen, C. et al. (2004) *Biochem J* 378, 509-18.



Western blot analysis of extracts from various cell lines using Flotillin-2 (C42A3) Rabbit mAb.

Entrez-Gene ID #2319  
UniProt ID #Q14254

**Storage:** Supplied in 10 mM sodium HEPES (pH 7.5), 150 mM NaCl, 100 µg/ml BSA, 50% glycerol and less than 0.02% sodium azide. Store at -20°C. Do not aliquot the antibody.

\*Species cross-reactivity is determined by western blot.

\*\*Anti-rabbit secondary antibodies must be used to detect this antibody.

**Recommended Antibody Dilutions:**

Western blotting 1:1000  
Immunoprecipitation 1:100

For application specific protocols please see the web page for this product at [www.cellsignal.com](http://www.cellsignal.com).

Please visit [www.cellsignal.com](http://www.cellsignal.com) for a complete listing of recommended companion products.

**IMPORTANT: For Western blots, incubate membrane with diluted antibody in 5% w/v BSA, 1X TBS, 0.1% Tween®20 at 4°C with gentle shaking, overnight.**

U.S. Patent No. 5,675,063  
Tween is a registered trademark of ICI Americas, Inc.