

LPP (8B3A11) Mouse mAb

Orders ■ 877-616-CELL (2355)
orders@cellsignal.com

Support ■ 877-678-TECH (8324)
info@cellsignal.com

Web ■ www.cellsignal.com

rev. 01/11/16

For Research Use Only. Not For Use In Diagnostic Procedures.

Applications	Species Cross-Reactivity*	Molecular Wt.	Isotype
W, IP, IHC-P, IF-IC Endogenous	H, M, Mk, Hm	75 kDa	Mouse IgG1**

Background: LIM-containing lipoma-preferred partner (LPP) belongs to the zyxin family, members of which include LIMD1, ajuba, trip6 and zyxin. Three LIM domains at the carboxy-terminus characterize this family of proteins. Zyxin family members associate with the actin cytoskeleton and are components of both the cell-cell junction adhesive complex and the integrin-mediated adhesive complex (1). They shuttle in and out of the nucleus where they may function in transcriptional activation (1).

LPP binding partners at cell-cell contacts include the actin regulator α -actinin (2) and the human tumor suppressor scrib which regulates cell migration and polarity (3).

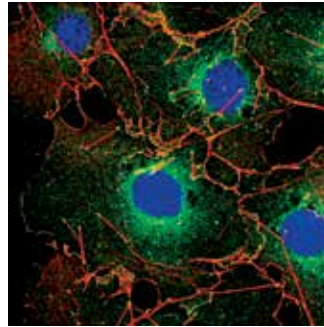
Specificity/Sensitivity: LPP (8B3A11) Mouse mAb detects endogenous levels of total LPP protein.

Source/Purification: Monoclonal antibody is produced by immunizing animals with a HIS-tagged recombinant fragment of human LPP.

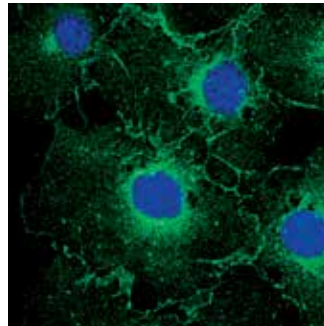
Background References:

- (1) Wang, Y. and Gilmore, T.D. (2003) *Biochim Biophys Acta* 1593, 115–20.
- (2) Hansen, M.D. and Beckerle, M.C. (2008) *Biochem Biophys Res Commun* 371, 144–8.
- (3) Petit, M.M. et al. (2005) *BMC Cell Biol* 6, 1.

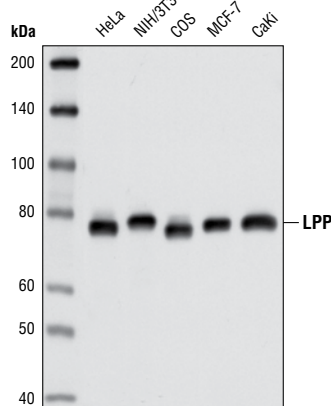
Merge



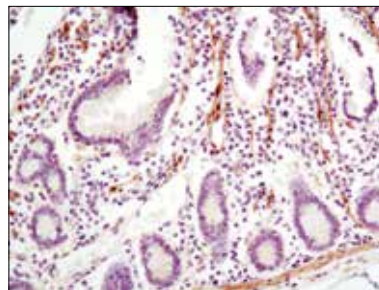
LPP



Confocal immunofluorescent analysis of COS cells using LPP (8B3A11) Mouse mAb (green). Actin filaments have been labeled using DyLight™ 554 Phalloidin #13054 (red). Blue pseudocolor = DRAQ5® #4084 (fluorescent DNA dye).



Western blot analysis of extracts from various cell types using LPP (8B3A11) Mouse mAb.



Immunohistochemical analysis of paraffin-embedded human small intestine using LPP (8B3A11) Mouse mAb.

Entrez-Gene ID #4026
UniProt ID #Q93052

Storage: Supplied in 10 mM sodium HEPES (pH 7.5), 150 mM NaCl, 100 μ g/ml BSA, 50% glycerol and less than 0.02% sodium azide. Store at -20°C . Do not aliquot the antibody.

*Species cross-reactivity is determined by western blot.

**Anti-mouse secondary antibodies must be used to detect this antibody.

Recommended Antibody Dilutions:

Western blotting	1:1000
Immunoprecipitation	1:50
Immunohistochemistry (Paraffin)	1:100
Unmasking buffer:	Citrate
Antibody diluent:	SignalStain® Antibody Diluent #8112
Immunofluorescence (IF-IC)	1:100

For application specific protocols please see the web page for this product at www.cellsignal.com.

Please visit www.cellsignal.com for a complete listing of recommended companion products.

IMPORTANT: For Western blots, incubate membrane with diluted antibody in 5% w/v nonfat dry milk, 1X TBS, 0.1% Tween®20 at 4°C with gentle shaking, overnight.

DRAQ5 is a registered trademark of Biostatus Limited. DyLight is a trademark of Thermo Fisher Scientific Inc. and its subsidiaries. Tween is a registered trademark of ICI Americas, Inc.

Applications Key: W—Western IP—Immunoprecipitation IHC—Immunohistochemistry ChIP—Chromatin Immunoprecipitation IF—Immunofluorescence F—Flow cytometry E-P—ELISA—Peptide

Species Cross-Reactivity Key: H—human M—mouse R—rat Hm—hamster Mk—monkey Mi—mink C—chicken Dm—D. melanogaster X—Xenopus Z—zebrafish B—bovine

Dg—dog Pg—pig Sc—S. cerevisiae Ce—C. elegans Hr—horse

All—all species expected

Species enclosed in parentheses are predicted to react based on 100% homology.