

Drosha (D28B1) Rabbit mAb



Orders ■ 877-616-CELL (2355)
orders@cellsignal.com

Support ■ 877-678-TECH (8324)
info@cellsignal.com

Web ■ www.cellsignal.com

rev. 01/07/16

For Research Use Only. Not For Use In Diagnostic Procedures.

Entrez-Gene ID #29102
Swiss-Prot Acc. #Q9NRR4

Applications	Species Cross-Reactivity*	Molecular Wt.	Isotype
W, IP Endogenous	H, M	160 kDa	Rabbit IgG**

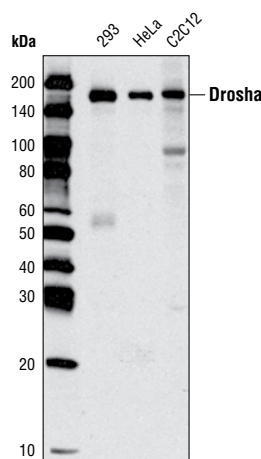
Background: Drosha was identified as a nuclear RNase III that catalyzes the initial step of microRNA (miRNA) processing (1). This enzyme processes the long primary transcript pri-miRNAs into stem-looped pre-miRNAs. Interference of Drosha results in the increase of pri-miRNAs and the decrease of pre-miRNAs (1). Drosha exists in a multiprotein complex called Microprocessor along with other components such as DGCR8 (2). Drosha, along with DGCR8, is necessary for miRNA biogenesis (3).

Specificity/Sensitivity: Drosha (D28B1) Rabbit mAb detects endogenous levels of total Drosha protein.

Source/Purification: Monoclonal antibody is produced by immunizing animals with a synthetic peptide corresponding to residues surrounding Gly953 of human Drosha.

Background References:

- (1) Lee, Y. et al. (2003) *Nature* 425, 415–9.
- (2) Denli, A.M. et al. (2004) *Nature* 432, 231–5.
- (3) Gregory, R.I. et al. (2004) *Nature* 432, 235–40.



Western blot analysis of extracts from various cell types using Drosha (D28B1) Rabbit mAb.

Storage: Supplied in 10 mM sodium HEPES (pH 7.5), 150 mM NaCl, 100 µg/ml BSA, 50% glycerol and less than 0.02% sodium azide. Store at -20°C. Do not aliquot the antibody.

***Species cross-reactivity is determined by western blot.**

****Anti-rabbit secondary antibodies must be used to detect this antibody.**

Recommended Antibody Dilutions:

Western blotting	1:1000
Immunoprecipitation	1:50

For application specific protocols please see the web page for this product at www.cellsignal.com.

Please visit www.cellsignal.com for a complete listing of recommended companion products.

IMPORTANT: For western blots, incubate membrane with diluted antibody in 5% w/v BSA, 1X TBS, 0.1% Tween-20 at 4°C with gentle shaking, overnight.

Applications Key: W—Western IP—Immunoprecipitation IHC—Immunohistochemistry ChIP—Chromatin Immunoprecipitation IF—Immunofluorescence F—Flow cytometry E-P—ELISA-Peptide
Species Cross-Reactivity Key: H—human M—mouse R—rat Hm—hamster Mk—monkey Mi—mink C—chicken Dm—D. melanogaster X—Xenopus Z—zebrafish B—bovine
 Dg—dog Pg—pig Sc—S. cerevisiae Ce—C. elegans Hr—Horse All—all species expected Species enclosed in parentheses are predicted to react based on 100% homology.