

AMACR (2A10) Mouse mAb



Orders ■ 877-616-CELL (2355)
orders@cellsignal.com

Support ■ 877-678-TECH (8324)
info@cellsignal.com

Web ■ www.cellsignal.com

rev. 01/06/16

For Research Use Only. Not For Use In Diagnostic Procedures.

Applications W, IP Endogenous	Species Cross-Reactivity*		Molecular Wt. 42 kDa	Isotype Mouse IgG2B**
	H, M			

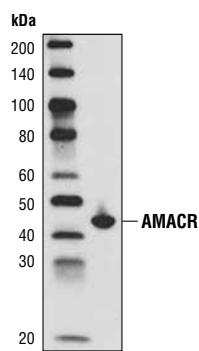
Background: α -methylacyl-CoA racemase (AMACR), an enzyme localized in peroxisomes and mitochondria, is involved in the β -oxidation of branched-chain fatty acids and fatty acid derivatives (1). AMACR has been reported to be a biomarker for prostate cancer (2-4). The expression of AMACR is also related to other types of cancers such as hepatocellular carcinoma (1), noninvasive bladder cancer (5), colorectal cancer (6) and gastric adenocarcinoma (7).

Specificity/Sensitivity: AMACR (2A10) Mouse mAb detects endogenous levels of total AMACR protein.

Source/Purification: Monoclonal antibody is produced by immunizing animals with a purified truncated recombinant human AMACR-His fusion protein.

Background References:

- (1) Li, W. et al. (2008) *J Exp Clin Cancer Res* 27, 2.
- (2) Rubin, M.A. et al. (2002) *JAMA* 287, 1662-70.
- (3) Jiang, Z. et al. (2002) *Am J Surg Pathol* 26, 1169-74.
- (4) Jiang, Z. et al. (2001) *Am J Surg Pathol* 25, 1397-404.
- (5) Gunia, S. et al. (2008) *Virchows Arch* 453, 165-70.
- (6) Marx, A. et al. (2008) *Virchows Arch* 453, 243-248.
- (7) Truong, C.D. et al. (2008) *Int J Clin Exp Pathol* 1, 518-523.



Western blot analysis of extracts from LNCaP cells using AMACR (2A10) Mouse mAb.

Entrez-Gene ID #23600
Swiss-Prot Acc. #Q9UHK6

Storage: Supplied in 10 mM sodium HEPES (pH 7.5), 150 mM NaCl, 100 μ g/ml BSA, 50% glycerol and less than 0.02% sodium azide. Store at -20°C. Do not aliquot the antibody.

*Species cross-reactivity is determined by western blot.

**Anti-mouse secondary antibodies must be used to detect this antibody.

Recommended Antibody Dilutions:

Western blotting	1:1000
Immunoprecipitation	1:50

For application specific protocols please see the web page for this product at www.cellsignal.com.

Please visit www.cellsignal.com for a complete listing of recommended companion products.

IMPORTANT: For western blots, incubate membrane with diluted antibody in 5% w/v nonfat dry milk, 1X TBS, 0.1% Tween-20 at 4°C with gentle shaking, overnight.

Applications Key: W—Western IP—Immunoprecipitation IHC—Immunohistochemistry ChIP—Chromatin Immunoprecipitation IF—Immunofluorescence F—Flow cytometry E-P—ELISA-Peptide

Species Cross-Reactivity Key: H—human M—mouse R—rat Hm—hamster Mk—monkey Mi—mink C—chicken Dm—D. melanogaster X—Xenopus Z—zebrafish B—bovine

Dg—dog Pg—pig Sc—S. cerevisiae Ce—C. elegans Hr—horse All—all species expected Species enclosed in parentheses are predicted to react based on 100% homology.