

Store at
4°C

Mouse (MOPC-21) mAb IgG1 Isotype Control (APC-Cy7[®] Conjugate)



Cell Signaling
TECHNOLOGY[®]

Support: +1-978-867-2388 (U.S.)
www.cellsignal.com/support

Orders: 877-616-2355 (U.S.)
orders@cellsignal.com

#31518

New 11/17

For Research Use Only. Not For Use In Diagnostic Procedures.

Concentration
200 µg/mL

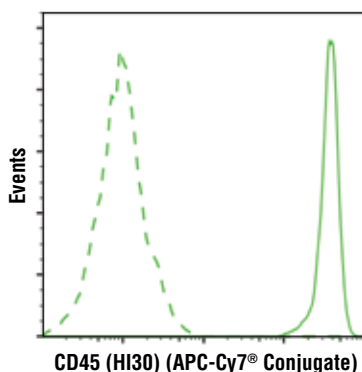
Applications
F

Isotype
Mouse IgG1

Description: This Cell Signaling Technology antibody is conjugated to APC-Cy7[®] under optimal conditions and tested in-house for direct flow cytometric analysis in human cells.

Background: Isotype control antibodies are used to estimate the nonspecific binding of target primary antibodies due to F_c receptor binding or other protein-protein interactions. An isotype control antibody should have the same immunoglobulin type and be used at the same concentration as the test antibody.

Specificity/Sensitivity: The antibody is not directed against any known antigen. It functions as an isotype control for mouse monoclonal antibodies.



CD45 (HI30) (APC-Cy7[®] Conjugate)

Flow cytometric analysis of live human peripheral blood mononuclear cells using CD45 (HI30) Mouse mAb (APC-Cy7[®] Conjugate) #77322 (solid line) compared to concentration-matched Mouse (MOPC-21) mAb IgG1 Isotype Control (APC-Cy7[®] Conjugate) (dashed line).

Storage: Supplied in 10 mM NaH₂PO₄, 150 mM NaCl, 0.09% Na₂S₂O₃, 0.1% gelatin, pH7.2. This product is stable for 6 months when stored at 4°C. *Do not aliquot the antibody. Protect from light. Do not freeze.*

Note: This control antibody must be diluted to the same concentration (not dilution) as the specific antibody in analysis. See Directions for Use.

Recommended Antibody Dilutions:

Flow Cytometry: Match IgG concentration of primary antibody.

For application specific protocols please see the web page for this product at www.cellsignal.com.

Please visit www.cellsignal.com for a complete listing of recommended companion products.

Directions for Use: Important: Dilute this control antibody to the same concentration (not dilution) as specific antibody in analysis. Higher background fluorescence may result if excessive amounts of mouse IgG isotype control are used. Do not use this antibody at 1:50 or 1:20 dilution like other CST APC-Cy7[®] conjugated antibodies.

Cy and CyDye are registered trademarks of GE Healthcare

Thank you for your recent purchase. If you would like to provide a review visit cellsignal.com/comments.

www.cellsignal.com

© 2017 Cell Signaling Technology, Inc.

Cell Signaling Technology is a trademark of Cell Signaling Technology, Inc.

Applications: W—Western IP—Immunoprecipitation IHC—Immunohistochemistry ChIP—Chromatin Immunoprecipitation IF—Immunofluorescence F—Flow cytometry E-P—ELISA-Peptide **Species Cross-Reactivity:** H—human M—mouse R—rat Hm—hamster Mk—monkey Mi—mink C—chicken Dm—D. melanogaster X—Xenopus Z—zebrafish B—bovine Dg—dog Pg—pig Sc—S. cerevisiae Ce—C. elegans Hr—Horse All—all species expected Species enclosed in parentheses are predicted to react based on 100% homology.