

# Rabbit (DA1E) mAb IgG XP<sup>®</sup> Isotype Control (Alexa Fluor<sup>®</sup> 488 Conjugate)



**Orders** ■ 877-616-CELL (2355)  
orders@cellsignal.com

**Support** ■ 877-678-TECH (8324)  
info@cellsignal.com

**Web** ■ www.cellsignal.com

rev. 01/04/16

**For Research Use Only. Not For Use In Diagnostic Procedures.**

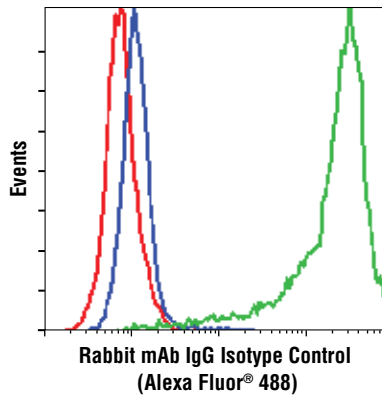
| Concentration | Applications | Isotype    |
|---------------|--------------|------------|
| 100 µg/ml     | F, IF-IC     | Rabbit IgG |

**Description:** This Cell Signaling Technology antibody is conjugated to Alexa Fluor<sup>®</sup> 488 fluorescent dye and tested in-house for direct flow cytometric analysis of human cells.

**Background:** Isotype control antibodies are used to estimate the non-specific binding of target primary antibodies due to F<sub>c</sub> receptor binding or other protein-protein interactions. An isotype control antibody should have the same immunoglobulin type as the test antibody.

**Specificity/Sensitivity:** Rabbit (DA1E) mAb IgG XP<sup>®</sup> Isotype Control is not expected to recognize any specific antigen. It functions as an isotype control for rabbit monoclonal antibodies.

**Directions for Use: Important!** Dilute this control antibody to the same concentration (not dilution) as the specific antibody used for analysis. Higher background fluorescence may result if excessive amounts of rabbit IgG isotype control is used. Do not use this antibody at 1:50 dilution as with other CST Alexa Fluor<sup>®</sup> conjugated antibodies.



*Flow cytometric analysis of Jurkat cells, using Rabbit (DA1E) mAb IgG XP<sup>®</sup> Isotype Control (Alexa Fluor<sup>®</sup> 488 Conjugate) (red) compared to Phospho-S6 Ribosomal Protein (Ser235/236) (D57.2.2E) XP<sup>®</sup> Rabbit mAb (Alexa Fluor<sup>®</sup> 488 Conjugate) #4803, untreated (blue) or IFN- $\alpha$ -treated (green).*

**Storage:** Supplied in PBS (pH 7.2), less than 0.1% sodium azide, 2 mg/ml BSA. Store at 4°C. *Protect from light. Do not freeze.*

**Note:** This control antibody must be diluted to the same concentration (not dilution) as the specific antibody in analysis. See Directions on Use.

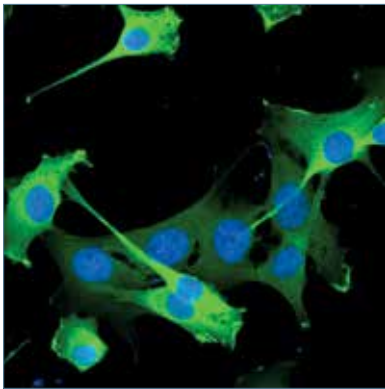
#### Recommended Antibody Dilutions:

Flow Cytometry:  
Immunofluorescence (IF-IC)  
Match IgG concentration of primary antibody.

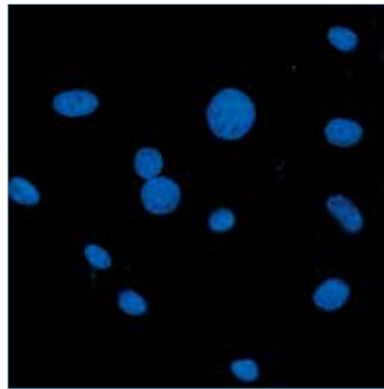
**For application specific protocols please see the web page for this product at [www.cellsignal.com](http://www.cellsignal.com).**

**Please visit [www.cellsignal.com](http://www.cellsignal.com) for a complete listing of recommended companion products.**

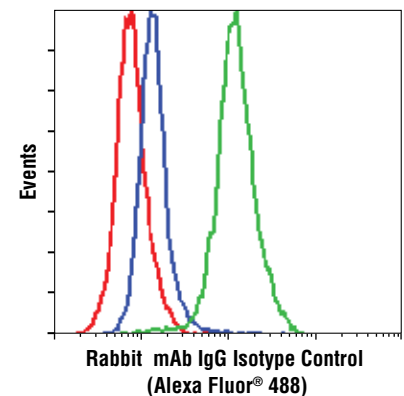
#### GAPDH



#### Isotype Control



*Confocal immunofluorescent analysis of Cos cells using GAPDH (14C10) Rabbit mAb (Alexa Fluor<sup>®</sup> 488 Conjugate) #3906 (green, left) compared to concentration matched Rabbit (DA1E) mAb IgG XP<sup>®</sup> Isotype Control (Alexa Fluor<sup>®</sup> 488 Conjugate) (green, right). Blue pseudocolor = DRAQ5<sup>®</sup> #4084 (fluorescent DNA dye).*



*Flow cytometric analysis of Jurkat cells, using Rabbit (DA1E) mAb IgG XP<sup>®</sup> Isotype Control (Alexa Fluor<sup>®</sup> 488 Conjugate) (red) compared to Phospho-Akt (Ser473) (D9E) XP<sup>®</sup> Rabbit mAb (Alexa Fluor<sup>®</sup> 488 Conjugate) #4071, untreated (green) or LY294002- and wortmannin-treated (blue).*

DRAQ5<sup>®</sup> is a registered trademark of Biostatus Limited.

Alexa Fluor<sup>®</sup> is a registered trademark of Molecular Probes, Inc.