

Store at
-20°C

MUC16 Antibody

#29623



Support: +1-978-867-2388 (U.S.)
www.cellsignal.com/support

Orders: 877-616-2355 (U.S.)
orders@cellsignal.com

Entrez-Gene ID #94025
UniProt ID #Q8WX17

New 06/18

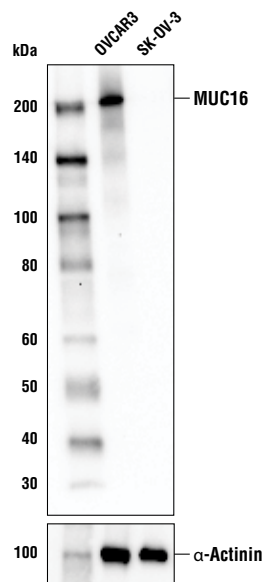
For Research Use Only. Not For Use In Diagnostic Procedures.

Applications W Endogenous	Species Cross-Reactivity* H, M	Molecular Wt. 200-270 kDa	Source Rabbit**
---------------------------------	-----------------------------------	------------------------------	--------------------

Background: Mucins are a family of macromolecules that line and protect the respiratory epithelium from microbes and pollutants in the local environment. Of the family members that are known to date, some are produced in a cell type and tissue-specific manner, suggesting distinct biological roles for members. Some members polymerize after secretion to form gel-like substances that coat the epithelial layer (1). MUC16 is a member of the mucin family, which are a high molecular weight, O-glycosylated proteins that play an important role in forming mucous barrier (2) and are found on the apical surface of the epithelia. It contains an extracellular domain at its amino acid terminus, a large tandem repeat and a transmembrane domain with a short cytoplasmic domain. MUC16 has been linked to lung cancer (3), and ovarian cancer (4). It provides protective, lubricating barrier against particles and infectious agents at mucosal surfaces (5).

Specificity/Sensitivity: MUC16 antibody recognizes endogenous levels of total MUC16 protein.

Source/Purification: Polyclonal antibodies are produced by immunizing animals with a synthetic peptide corresponding to residues near the carboxy terminus of human MUC16 protein. Antibodies are purified by protein A and peptide affinity chromatography.



Western blot analysis of OVCAR3 and SK-OV-3 cell lysates using MUC16 antibody (upper) and α -Actinin (D6F6) XP[®] Rabbit mAb #6487 (lower). As expected, SK-OV-3 cells are negative for MUC16 protein expression.

Storage: Supplied in 10 mM sodium HEPES (pH 7.5), 150 mM NaCl, 100 μ g/ml BSA and 50% glycerol. Store at -20°C . Do not aliquot the antibody

*Species cross-reactivity is determined by western blot.

**Anti-rabbit secondary antibodies must be used to detect this antibody.

Recommended Antibody Dilutions:

Western blotting 1:1000

For product specific protocols and a complete listing of recommended companion products please see the product web page at www.cellsignal.com.

Background References:

- (1) Ma, J. et al. (2017) *Chest*.
- (2) Argüeso, P. et al. (2003) *Invest Ophthalmol Vis Sci* 44, 2487-95.
- (3) Kanwal, M. et al. (2018) *Oncotarget* 9, 12226-12239.
- (4) Williams, K.A. et al. (2014) *PLoS One* 9, e88334.
- (5) Gilowska, I. (2014) *Postepy Hig Med Dosw* (Online) 68, 842-50.

Tween is a registered trademark of ICI Americas, Inc.

IMPORTANT: For western blots, incubate membrane with diluted antibody in 5% w/v BSA, 1X TBS, 0.1% Tween[®]20 at 4°C with gentle shaking, overnight.

Thank you for your recent purchase. If you would like to provide a review visit cellsignal.com/comments.

www.cellsignal.com

© 2018 Cell Signaling Technology, Inc.

XP and Cell Signaling Technology are trademarks of Cell Signaling Technology, Inc.

Applications: W—Western IP—Immunoprecipitation IHC—Immunohistochemistry ChIP—Chromatin Immunoprecipitation IF—Immunofluorescence F—Flow cytometry E-P—ELISA-Peptide **Species Cross-Reactivity:** H—human M—mouse R—rat Hm—hamster Mk—monkey Mi—mink C—chicken Dm—D. melanogaster X—Xenopus Z—zebrafish B—bovine Dg—dog Pg—pig Sc—S. cerevisiae Ce—C. elegans Hr—Horse All—all species expected **Species** enclosed in parentheses are predicted to react based on 100% homology.