

Store at
4°C

#26217

CD161/KLRB1 (HP-3G10) Mouse mAb (PerCP-Cy5.5® Conjugate)

Cell Signaling
TECHNOLOGY®Support: +1-978-867-2388 (U.S.)
www.cellsignal.com/supportOrders: 877-616-2355 (U.S.)
orders@cellsignal.comEntrez-Gene ID #3820
UniProt ID #Q12918

New 06/18

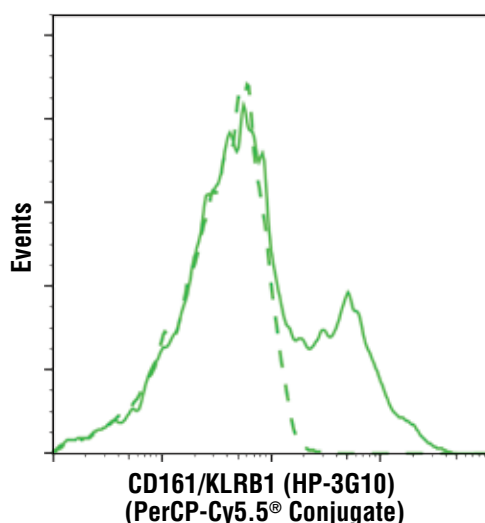
For Research Use Only. Not For Use In Diagnostic Procedures.**Applications**
F
Endogenous**Species Cross-Reactivity**
H**Isotype**
Mouse IgG1, κ

Description: This Cell Signaling Technology antibody is conjugated to PerCP-Cy5.5® and tested in-house for direct flow cytometric analysis in human cells.

Background: CD161/KLRB1 (Killer cell lectin-like receptor subfamily B member 1, also known as CLEC5B and NKR-P1A) is a type II transmembrane protein that is expressed on the majority of Natural Killer (NK) cells, NK T cells, and some T lymphocytes (1). CD161/KLRB1 is also expressed on Th17 cells, promotes their generation, and modulates their function (2). Engagement with its ligand lectin-like transcript 1 (LLT1) inhibits NK cell function, while LLT1 and CD161/KLRB1 interaction in the presence of a TCR signal enhances IFN-γ production by T cells (3,4). There are several different CD161 isoforms in rodents and some function as activating receptors as well (5,6). This HP-3G10 antibody is used for flow cytometric analysis of CD161/KLRB1 expression on NK, NKT, and various subsets of T cells.

Specificity/Sensitivity: CD161/KLRB1 (HP-3G10) Mouse mAb (PerCP-Cy5.5® Conjugate) recognizes endogenous levels of total CD161/KLRB1 protein. This antibody detects an epitope within the extracellular domain.

Source/Purification: This monoclonal antibody was purified from tissue culture supernatant via affinity chromatography. The purified antibody was conjugated under optimal conditions, with unreacted dye removed from the preparation.



Flow cytometric analysis of live human peripheral blood mononuclear cells using CD161/KLRB1 (HP-3G10) Mouse mAb (PerCP-Cy5.5® Conjugate) (solid line) compared to concentration-matched Mouse (MOPC-21) mAb IgG1 Isotype Control (PerCP-Cy5.5® Conjugate) #24589 (dashed line).

Storage: Supplied in 10 mM NaH₂PO₄, 150 mM NaCl, 0.09% NaN₃, 0.1% gelatin, pH 7.2. This product is stable for 6 months when stored at 4°C. *Do not aliquot the antibody. Protect from light. Do not freeze.*

Recommended Antibody Dilutions:

Flow Cytometry 1:20

For product specific protocols and a complete listing of recommended companion products please see the product web page at www.cellsignal.com.

Background References:

- (1) Lanier, L.L. et al. (1994) *J Immunol* 153, 2417-28.
- (2) Bai, A. et al. (2014) *J Immunol* 193, 3366-77.
- (3) Aldemir, H. et al. (2005) *J Immunol* 175, 7791-5.
- (4) Rosen, D.B. et al. (2005) *J Immunol* 175, 7796-9.
- (5) Carlyle, J.R. et al. (2006) *J Immunol* 176, 7511-24.
- (6) Kirkham, C.L. and Carlyle, J.R. (2014) *Front Immunol* 5, 214.

Cy and CyDye are registered trademarks of GE Healthcare.

Thank you for your recent purchase. If you would like to provide a review visit cellsignal.com/comments.

www.cellsignal.com

© 2018 Cell Signaling Technology, Inc.

Cell Signaling Technology is a trademark of Cell Signaling Technology, Inc.

Applications: W—Western IP—Immunoprecipitation IHC—Immunohistochemistry ChIP—Chromatin Immunoprecipitation IF—Immunofluorescence F—Flow cytometry E-P—ELISA-Peptide **Species Cross-Reactivity:** H—human M—mouse R—rat Hm—hamster Mk—monkey Mi—mink C—chicken Dm—D. melanogaster X—Xenopus Z—zebrafish B—bovine Dg—dog Pg—pig Sc—S. cerevisiae Ce—C. elegans Hr—Horse All—all species expected **Species** enclosed in parentheses are predicted to react based on 100% homology.