

GLI1 (V812) Antibody

Orders ■ 877-616-CELL (2355)
orders@cellsignal.com
Support ■ 877-678-TECH (8324)
info@cellsignal.com
Web ■ www.cellsignal.com

rev. 12/23/15

For Research Use Only. Not For Use In Diagnostic Procedures.

Applications W, IP Endogenous	Species Cross-Reactivity* H, (M, R)	Molecular Wt. 160 kDa	Source Rabbit**
-------------------------------------	--	--------------------------	--------------------

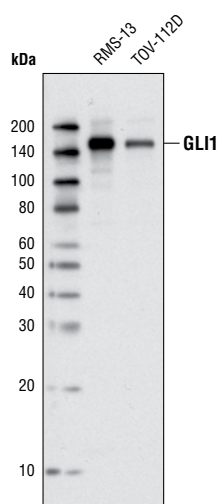
Background: GLI was first identified as a gene amplified in a malignant glioma (1) capable of transforming primary cells in cooperation with adenovirus E1A (2). GLI belongs to the Kruppel family of zinc finger proteins that includes three mammalian GLI proteins: GLI1, GLI2 and GLI3 (3). These GLI proteins are similar to the *Drosophila* homolog Ci (Cubitus interruptus) and functions as transcription factors activated by the Hedgehog signaling pathway. This plays an important role in animal development and is aberrantly activated in many types of cancers (4,5).

Specificity/Sensitivity: GLI1 (V812) Antibody detects the endogenous levels of total GLI1 protein.

Source/Purification: Polyclonal antibodies are produced by immunizing animals with a synthetic peptide corresponding to residues surrounding Val812 of human GLI1. Antibodies are purified by peptide affinity chromatography.

Background References:

- (1) Kinzler, K.W. et al. (1987) *Science* 236, 70–3.
- (2) Ruppert, J.M. et al. (1991) *Mol Cell Biol* 11, 1724–8.
- (3) Kinzler, K.W. et al. (1988) *Nature* 332, 371–4.
- (4) Ingham, P.W. and McMahon, A.P. (2001) *Genes Dev* 15, 3059–87.
- (5) McMahon, A.P. et al. (2003) *Curr Top Dev Biol* 53, 1–114.



Western blot analysis of extracts from RMS-13 and TOV-112D cells using GLI1 (V812) Antibody.

Entrez-Gene ID #2735
Swiss-Prot Acc. #P08151

Storage: Supplied in 10 mM sodium HEPES (pH 7.5), 150 mM NaCl, 100 µg/ml BSA and 50% glycerol. Store at -20°C. Do not aliquot the antibody.

***Species cross-reactivity is determined by western blot.**

****Anti-rabbit secondary antibodies must be used to detect this antibody.**

Recommended Antibody Dilutions:

Western blotting 1:1000
Immunoprecipitation 1:50

For application specific protocols please see the web page for this product at www.cellsignal.com.

Please visit www.cellsignal.com for a complete listing of recommended companion products.

IMPORTANT: For western blots, incubate membrane with diluted antibody in 5% w/v BSA, 1X TBS, 0.1% Tween-20 at 4°C with gentle shaking, overnight.

Applications Key: W—Western IP—Immunoprecipitation IHC—Immunohistochemistry ChIP—Chromatin Immunoprecipitation IF—Immunofluorescence F—Flow cytometry E-P—ELISA-Peptide
Species Cross-Reactivity Key: H—human M—mouse R—rat Hm—hamster Mk—monkey Mi—mink C—chicken Dm—D. melanogaster X—Xenopus Z—zebrafish B—bovine
Dg—dog Pg—pig Sc—S. cerevisiae Ce—C. elegans Hr—horse All—all species expected Species enclosed in parentheses are predicted to react based on 100% homology.