

REDD1 Antibody

Orders ■ 877-616-CELL (2355)
orders@cellsignal.com
Support ■ 877-678-TECH (8324)
info@cellsignal.com
Web ■ www.cellsignal.com

rev. 12/23/15

For Research Use Only. Not For Use In Diagnostic Procedures.

Entrez-Gene ID # 54541
Swiss-Prot Acc. # Q9NX09

Applications	Species Cross-Reactivity*	Molecular Wt.	Source
W Transfected	H	28 kDa	Rabbit**

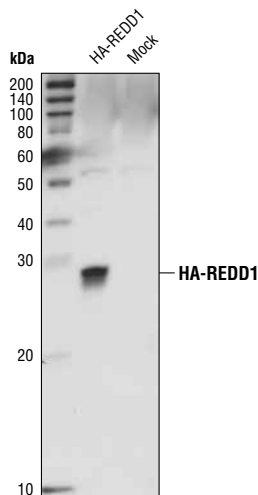
Background: REDD1 (REgulated in Development and DNA damage responses) expression is induced by hypoxia, cell stress, apoptosis and DNA damage. REDD1 is a transcriptional target of p53 and p63 following DNA damage, and links p63 to Ros (1). REDD1 functions as a negative regulator of mTOR in response to hypoxia in a tuberlin-dependent manner (2). Depending on cell context, REDD1 can either be protecting or detrimental for cells under oxidative or ischemic stresses (3).

Specificity/Sensitivity: REDD1 Antibody detects transfected levels of REDD1 protein.

Source/Purification: Polyclonal antibodies are produced by immunizing animals with a synthetic peptide surrounding Asn60 of human REDD1. Antibodies are purified by peptide affinity chromatography.

Background References:

- (1) Ellisen, L.W. et al. (2002) *Mol Cell* 10, 995–1005.
- (2) Brugarolas, J. et al. (2004) *Genes Dev* 18, 2893–904.
- (3) Shoshani, T. et al. (2002) *Mol Cell Biol* 22, 2283–93.



Western blot analysis of extracts from COS-7 cells, transfected with HA-REDD1 or untransfected (mock), using REDD1 Antibody.

Storage: Supplied in 10 mM sodium HEPES (pH 7.5), 150 mM NaCl, 100 µg/ml BSA and 50% glycerol. Store at -20°C. Do not aliquot the antibody.

*Species cross-reactivity is determined by western blot.

**Anti-rabbit secondary antibodies must be used to detect this antibody.

Recommended Antibody Dilutions:

Western Blotting 1:1000

For application specific protocols please see the web page for this product at www.cellsignal.com.

Please visit www.cellsignal.com for a complete listing of recommended companion products.

IMPORTANT: For western blots, incubate membrane with diluted antibody in 5% w/v BSA, 1X TBS, 0.1% Tween-20 at 4°C with gentle shaking, overnight.

Applications Key: W—Western IP—Immunoprecipitation IHC—Immunohistochemistry ChIP—Chromatin Immunoprecipitation IF—Immunofluorescence F—Flow cytometry E-P—ELISA-Peptide
Species Cross-Reactivity Key: H—human M—mouse R—rat Hm—hamster Mk—monkey Mi—mink C—chicken Dm—D. melanogaster X—Xenopus Z—zebrafish B—bovine
Dg—dog Pg—pig Sc—S. cerevisiae Ce—C. elegans Hr—Horse All—all species expected Species enclosed in parentheses are predicted to react based on 100% homology.