

Store at
4°C

TurboBlue Protein Gel Stain

#24053

1 L



Support: +1-978-867-2388 (U.S.)
cellsignal.com/support

Orders: 877-616-2355 (U.S.)
orders@cellsignal.com

For Research Use Only. Not for Use in Diagnostic Procedures.

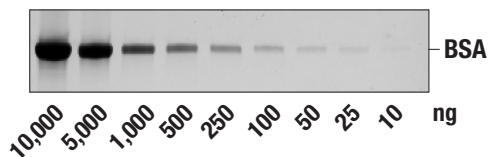
Description: TurboBlue Protein Gel Stain is supplied as a ready-to-use solution with no fixation steps required. This product is recommended for visible blue protein staining on SDS-PAGE gels and has a lower detection limit of around 10-20 ng protein per band. This staining technique is often utilized to visualize the presence of protein on an SDS-PAGE gel.

Directions for Use:

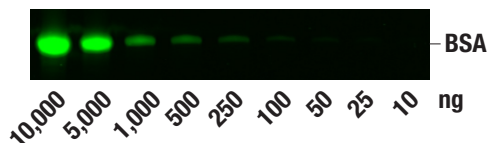
- Following gel electrophoresis, rinse gel briefly with diH₂O to remove any detergent that may inhibit staining.
- Invert bottle of TurboBlue Protein Gel Stain several times prior to use.
- Incubate gel with gentle rocking in 25 mL of TurboBlue Protein Gel Stain for 60 min while covered at room temperature. Incubation may be extended overnight without overstaining.

Note: The staining solution volume is dependent on container size.

 - For best results, add enough TurboBlue Protein Gel Stain to cover the gel fully.
- Optional: Wash gel in diH₂O 3 times for 5 min at room temperature, or until desired destaining has occurred. Otherwise, rinse gel briefly with diH₂O before imaging.
- Proceed with imaging by photographing in visible light, imaging with white light, or by near-IR fluorescence gel scanner.
- Disposal: TurboBlue Protein Gel Stain is a non-hazardous, non-toxic, 100% aqueous solution that can be disposed of down the drain once neutralized. The staining solution is acidic and must be neutralized before disposing down the drain. This can be done by adding 743 μ L 1N sodium hydroxide per 1 mL of TurboBlue Protein Gel Stain and mixing well. This can also be done by adding 30 mg sodium hydroxide pellets per 1 mL of TurboBlue Protein Gel Stain and stirring to dissolve completely.



Titration of BSA visualized by TurboBlue Protein Gel Stain after polyacrylamide gel electrophoresis and imaged using white light.



Titration of BSA visualized by TurboBlue Protein Gel Stain after polyacrylamide gel electrophoresis and imaged using the 800 channel on an Odyssey CLx Imaging System.

Storage: Store at 4°C. This product is stable for 24 months. Do not dilute or aliquot.

Please visit cellsignal.com for validation data and a complete listing of recommended companion products.

All other trademarks are the property of their respective owners. Visit cellsignal.com/trademarks for more information.

Thank you for your recent purchase. If you would like to provide a review visit cellsignal.com/comments.

cellsignal.com