

# Ribosomal Protein L7a (R225) Antibody

Orders ■ 877-616-CELL (2355)  
orders@cellsignal.com  
Support ■ 877-678-TECH (8324)  
info@cellsignal.com  
Web ■ www.cellsignal.com

rev. 12/22/15

For Research Use Only. Not For Use In Diagnostic Procedures.

Entrez-Gene ID #6130  
Swiss-Prot Acc. #P62424

Applications	Species Cross-Reactivity*	Molecular Wt.	Source
W Endogenous	H, M, R, Mk	32 kDa	Rabbit**

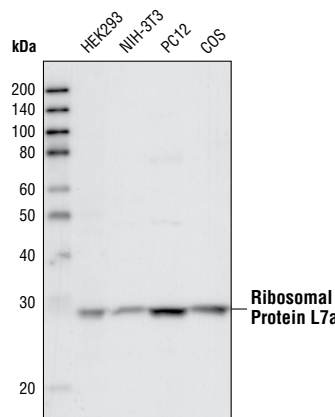
**Background:** Ribosomal protein L7a is a highly conserved ribosome protein localized to 60S ribosomal subunit (1). The protein has distinct domains that target the newly synthesized polypeptide to nucleus and the nucleoli, the site of ribosome biosynthesis (2). Ribosomal protein L7a can also interact with RNA *in vitro* through two distinct RNA-binding domains in the protein (3). Taken together, nucleolar localization and the ability to bind RNA suggests that ribosomal protein L7a may act as an important component for ribosome biosynthesis and function.

**Specificity/Sensitivity:** RPL7a Antibody detects endogenous levels of total RPL7a protein. Immunofluorescent staining using this antibody shows RPL7a localized mostly on the ER membrane and in nucleoli, sites for translation and ribosome synthesis, respectively, indicating its utility as a ribosomal marker.

**Source/Purification:** Polyclonal antibodies are produced by immunizing animals with a synthetic peptide corresponding to residues surrounding Arg225 of human ribosomal protein L7a. Antibodies are purified by protein A and peptide affinity chromatography.

**Background References:**

- (1) De Falco, S. et al. (1993) *Gene* 126, 227–235.
- (2) Russo, G. et al. (1997) *J. Biol. Chem.* 272, 5229–5235.
- (3) Russo, G. et al. (2005) *Biochem J.* 385, 289–299.



Western blot analysis of extracts from various cell lines using Ribosomal Protein L7a (R225) Antibody.

**Storage:** Supplied in 10 mM sodium HEPES (pH 7.5), 150 mM NaCl, 100 µg/ml BSA and 50% glycerol. Store at -20°C. Do not aliquot the antibody.

\*Species cross-reactivity is determined by western blot.

\*\*Anti-rabbit secondary antibodies must be used to detect this antibody.

**Recommended Antibody Dilutions:**

Western blotting 1:1000

For application specific protocols please see the web page for this product at [www.cellsignal.com](http://www.cellsignal.com).

Please visit [www.cellsignal.com](http://www.cellsignal.com) for a complete listing of recommended companion products.

**IMPORTANT: For western blots, incubate membrane with diluted antibody in 5% w/v nonfat dry milk, 1X TBS, 0.1% Tween-20 at 4°C with gentle shaking, overnight.**