

Store at  
-20°C

#23318

# Cell Stimulation Cocktail (with Protein Transport Inhibitors) (500X)

100 µl



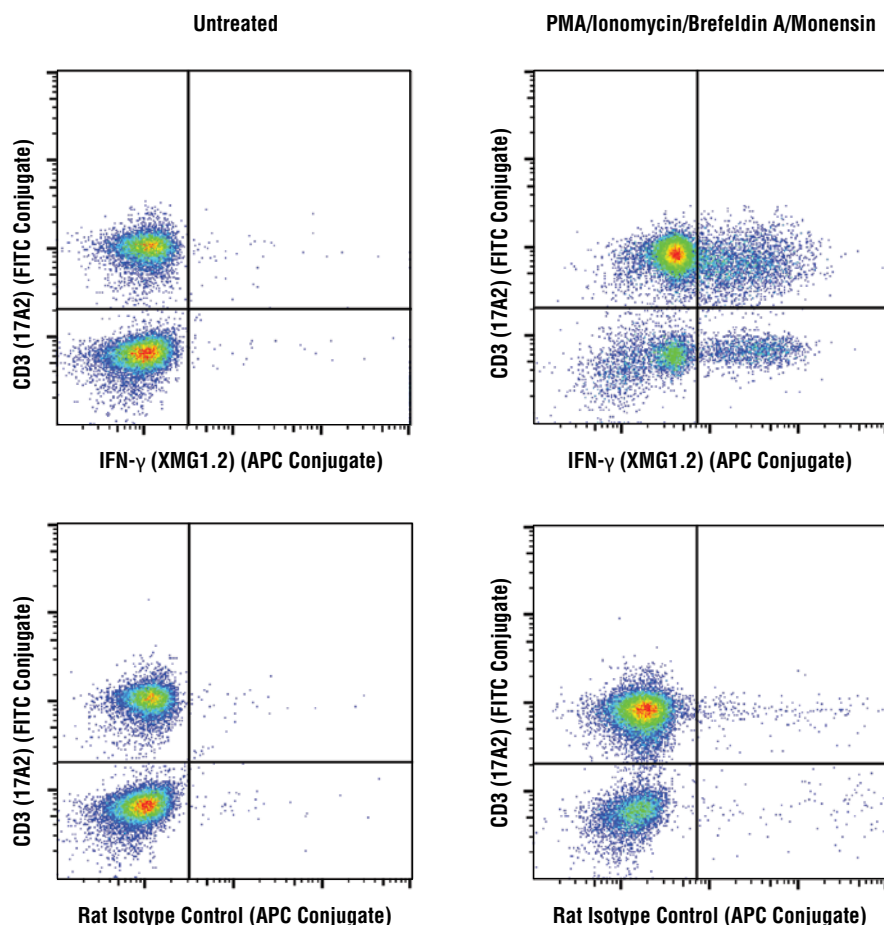
Support: +1-978-867-2388 (U.S.)  
www.cellsignal.com/support

Orders: 877-616-2355 (U.S.)  
orders@cellsignal.com

rev. 10/21/19

## For Research Use Only. Not For Use In Diagnostic Procedures.

**Description:** Cell Stimulation Cocktail (with Protein Transport Inhibitors) (500X) is an ethanol solution that contains the phorbol ester, PMA (phorbol-12-myristate-13-acetate), the calcium ionophore, Ionomycin, and the protein transport inhibitors Brefeldin A and Monensin. When added *in vitro* to cell suspensions, the PMA and Ionomycin activate the cells, leading to increased cytokine production. The Brefeldin A and Monensin limit protein secretion, allowing for intracellular detection of the accumulated cytokines by downstream immunoassays.



Flow cytometric analysis of live mouse splenocytes, untreated (left column) or treated with Cell Stimulation Cocktail (with Protein Transport Inhibitors) (500X; right column), using IFN- $\gamma$  (XMG1.2) Rat mAb (APC Conjugate) #32793 (top row) or concentration-matched Rat Isotype Control (APC Conjugate) (bottom row), and co-stained with CD3 (17A2) Rat mAb (FITC Conjugate) #86603.

**Storage:** Store at -20°C tightly sealed to prevent evaporation and protected from light. This product is stable for at least 6 months when stored at -20°C.

### Directions for Use:

1. Prepare the cell suspension in the appropriate cell culture medium.
2. To obtain a 1X final concentration, add the Cell Stimulation Cocktail (with Protein Transport Inhibitors) (500X) directly to the cell suspension at 2 µL/mL.
3. Incubate the cells at 37°C in an atmosphere that contains CO<sub>2</sub>.
4. Harvest the cells for the immunoassay of interest.

**Note:** The concentration of cells and incubation time will vary depending on the desired results. This product is an ethanol solution and susceptible to evaporation. Keep tightly sealed when not in use.

**For product specific protocols and a complete listing of recommended companion products please see the product web page at [www.cellsignal.com](http://www.cellsignal.com).**

Thank you for your recent purchase. If you would like to provide a review visit [cellsignal.com/comments](http://cellsignal.com/comments).

[www.cellsignal.com](http://www.cellsignal.com)

© 2019 Cell Signaling Technology, Inc.

Cell Signaling Technology is a trademark of Cell Signaling Technology, Inc.

**Applications:** W—Western IP—Immunoprecipitation IHC—Immunohistochemistry ChIP—Chromatin Immunoprecipitation IF—Immunofluorescence F—Flow cytometry E-P—ELISA-Peptide **Species Cross-Reactivity:** H—human M—mouse R—rat Hm—hamster Mk—monkey Mi—mink C—chicken Dm—D. melanogaster X—Xenopus Z—zebrafish B—bovine Dg—dog Pg—pig Sc—S. cerevisiae Ce—C. elegans Hr—Horse All—all species expected **Species enclosed in parentheses are predicted to react based on 100% homology.**