

Store at
-20°C

BSA (D1C8Q) Rabbit mAb

Cell Signaling
TECHNOLOGY®

#23053

New 09/17

Support: +1-978-867-2388 (U.S.)
www.cellsignal.com/supportOrders: 877-616-2355 (U.S.)
orders@cellsignal.comEntrez-Gene ID #280717
UniProt ID #P02769**For Research Use Only. Not For Use In Diagnostic Procedures.**

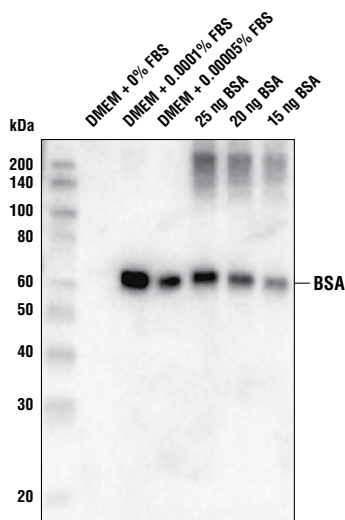
Applications W Recombinant	Species Cross-Reactivity* B	Molecular Wt. 67 kDa	Isotype Rabbit IgG**
----------------------------------	--------------------------------	-------------------------	-------------------------

Background: Bovine serum albumin (BSA) is the most abundant protein in plasma. Albumin is predominantly synthesized in the liver and is a major transportation component for many endogenous and exogenous compounds, including fatty acids, steroid hormones, metabolites and drugs. It is also responsible for maintaining colloid osmotic pressure and may affect microvascular integrity (1).

Background References:(1) Quinlan, G.J. et al. (2005) *Hepatology* 41, 1211-9.

Specificity/Sensitivity: BSA (D1C8Q) Rabbit mAb recognizes total bovine albumin protein. The antibody does not detect human albumin. Note: For best results, avoid reagents that contain BSA.

Source/Purification: Monoclonal antibody is produced by immunizing animals with recombinant protein specific to the amino terminus of bovine BSA protein.



Western blot analysis of the indicated amounts of DMEM/FBS and BSA using BSA (D1C8Q) Rabbit mAb.

Storage: Supplied in 10 mM sodium HEPES (pH 7.5), 150 mM NaCl, 100 µg/ml gelatin, 50% glycerol and less than 0.02% sodium azide. Store at -20°C. Do not aliquot the antibody.

*Species cross-reactivity is determined by western blot.
**Anti-rabbit secondary antibodies must be used to detect this antibody.

Recommended Antibody Dilutions:

Western blotting 1:1000

For product specific protocols and a complete listing of recommended companion products please see the product web page at www.cellsignal.com

Tween is a registered trademark of ICI Americas, Inc.

IMPORTANT: For western blots, incubate membrane with diluted antibody in 5% w/v nonfat dry milk, 1X TBS, 0.1% Tween®20 at 4°C with gentle shaking, overnight.

Thank you for your recent purchase. If you would like to provide a review visit cellsignal.com/comments.

www.cellsignal.com

© 2017 Cell Signaling Technology, Inc.

Cell Signaling Technology is a trademark of Cell Signaling Technology, Inc.

Applications: W—Western IP—Immunoprecipitation IHC—Immunohistochemistry ChIP—Chromatin Immunoprecipitation IF—Immunofluorescence F—Flow cytometry E-P—ELISA-Peptide Species Cross-Reactivity: H—human M—mouse R—rat Hm—hamster Mk—monkey Mi—mink C—chicken Dm—D. melanogaster X—Xenopus Z—zebrafish B—bovine Dg—dog Pg—pig Sc—S. cerevisiae Ce—C. elegans Hr—Horse All—all species expected Species enclosed in parentheses are predicted to react based on 100% homology.