

#15009 Store at 4°C

# DYKDDDDK Tag (D6W5B) Rabbit mAb (Binds to same epitope as Sigma's Anti-FLAG® M2 Antibody) (Alexa Fluor® 647 Conjugate)

www.cellsignal.com

Support: 877-678-TECH (8324)  
www.cellsignal.com/support

Orders: 877-616-CELL (2355)  
orders@cellsignal.com

New 04/15

For Research Use Only. Not For Use In Diagnostic Procedures.

Applications	Species Cross-Reactivity	Isotype
F Transfected	All	Rabbit IgG

**Description:** This Cell Signaling Technology antibody is conjugated to Alexa Fluor® 647 fluorescent dye and tested in-house for direct flow cytometry analysis in monkey cells. This antibody is expected to exhibit the same species cross-reactivity as the unconjugated DYKDDDDK Tag (D6W5B) Rabbit mAb (Binds to same epitope as Sigma's Anti-FLAG® M2 Antibody) #14793.

**Background:** Epitope tags are useful for the labeling and detection of proteins using immunoblotting, immunoprecipitation, and immunostaining techniques. Because of their small size, they are unlikely to affect the tagged protein's biochemical properties.

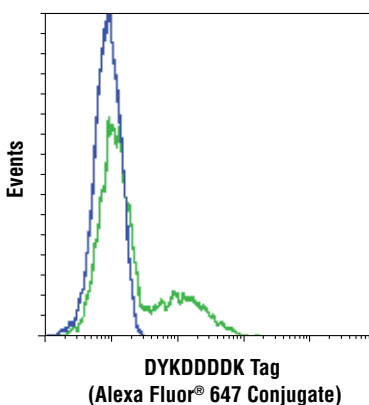
The DYKDDDDK peptide has been used extensively as a general epitope tag in expression vectors. This peptide can be expressed and detected with the protein of interest as an amino-terminal or carboxy-terminal fusion (1).

**Specificity/Sensitivity:** DYKDDDDK Tag (D6W5B) Rabbit mAb (Binds to same epitope as Sigma's Anti-FLAG® M2 Antibody) (Alexa Fluor® 647 Conjugate) detects exogenously expressed DYKDDDDK proteins in cells. The antibody recognizes the DYKDDDDK peptide, which is the same epitope recognized by Sigma's Anti-FLAG® antibodies, fused to either the amino-terminus or carboxy-terminus of the target protein.

**Source/Purification:** Monoclonal antibody is produced by immunizing animals with a synthetic DYKDDDDK peptide.

#### Background References:

(1) Brizzard, B.L. et al. (1994) *Biotechniques* 16, 730-5.



Flow cytometric analysis of COS-7 cells, untransfected (blue) or transfected with a DYKDDDDK-tagged fusion protein, using DYKDDDDK Tag (D6W5B) Rabbit mAb (Binds to same epitope as Sigma's Anti-FLAG® M2 Antibody) (Alexa Fluor® 647 Conjugate) (green).

**Storage:** Supplied in PBS (pH 7.2), less than 0.1% sodium azide and 2 mg/ml BSA. Store at 4°C. Do not aliquot the antibody. Protect from light. Do not freeze.

#### Recommended Antibody Dilutions:

Flow Cytometry 1:50

For product specific protocols and a complete listing of recommended companion products please see the product web page at [www.cellsignal.com](http://www.cellsignal.com)

This product is provided under an intellectual property license from Life Technologies Corporation. The transfer of this product is contingent on the buyer using the purchased product solely in research, including use with HCS or other automated imaging applications but excluding use in combination with DNA microarrays. The buyer must not sell or otherwise transfer this product or its components for (a) diagnostic, therapeutic or prophylactic purposes; (b) testing, analysis or screening services, or information in return for compensation on a per-test basis; (c) manufacturing or quality assurance or quality control, or (d) resale, whether or not resold for use in research. For information on purchasing a license to this product for purposes other than as described above, contact Life Technologies Corporation, 5791 Van Allen Way, Carlsbad, CA 92008 USA or [outlicensing@lifetech.com](mailto:outlicensing@lifetech.com). Alexa Fluor is a registered trademark of Life Technologies Corporation. Anti-FLAG is a registered trademark of Sigma-Aldrich.

Thank you for your recent purchase. If you would like to provide a review visit [www.cellsignal.com/comments](http://www.cellsignal.com/comments).