

Store at
-20°C
#14969

CXCL10 (D5L5L) Rabbit mAb

www.cellsignal.com

Support: 877-678-TECH (8324)
www.cellsignal.com/support

Orders: 877-616-CELL (2355)
orders@cellsignal.com

Entrez-Gene ID #3627
UniProt ID #P02778

New 04/15

For Research Use Only. Not For Use In Diagnostic Procedures.

Applications W Endogenous	Species Cross-Reactivity* H	Molecular Wt. 10 kDa	Isotype Rabbit IgG**
---------------------------------	--------------------------------	-------------------------	-------------------------

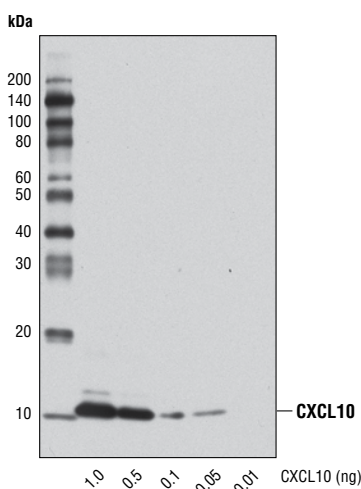
Background: Chemokine (C-X-C motif) ligand 10 (CXCL10, IP-10) is a chemokine produced by a number of cell types and that is induced in response to pro-inflammatory cytokines, such as IFN- γ and TNF- α (1,2). CXCL10 binds to the chemokine receptor CXCR3 and induces calcium flux and cell migration (3). The CXCR3 protein is normally expressed on activated CD4+ T cells and NK cells, which can produce pro-inflammatory cytokines, including IFN- γ and TNF- α (3,4). As a result, these molecules act in an amplification loop to promote immune responses in the contexts of both autoimmunity and a tumor immune response (5,6).

Specificity/Sensitivity: CXCL10 (D5L5L) Rabbit mAb recognizes endogenous levels of total CXCL10 protein. This antibody cross-reacts with a 100 kDa protein of unknown origin in some cell lines.

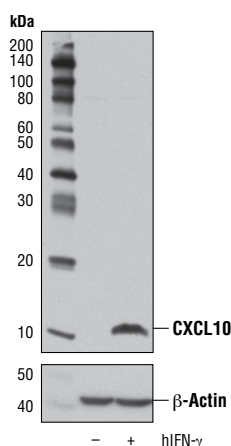
Source/Purification: Monoclonal antibody is produced by immunizing animals with recombinant protein specific to human CXCL10 protein.

Background References:

- (1) Shin, S.Y. et al. (2010) *J Biol Chem* 285, 30731-40.
- (2) Luster, A.D. and Ravetch, J.V. (1987) *J Exp Med* 166, 1084-97.
- (3) Loetscher, M. et al. (1996) *J Exp Med* 184, 963-9.
- (4) Kajitani, K. et al. (2012) *Breast Cancer Res Treat* 134, 139-55.
- (5) Luster, A.D. and Leder, P. (1993) *J Exp Med* 178, 1057-65.
- (6) Antonelli, A. et al. (2014) *Autoimmun Rev* 13, 272-80.



Western blot analysis of recombinant human CXCL10 protein using CXCL10 (D5L5L) Rabbit mAb.



Western blot analysis of extracts from HT-29 cells, untreated (-) or treated with Human Interferon- γ (hIFN- γ) #8901 (50 ng/ml, 16 hr; +), using CXCL10 (D5L5L) Rabbit mAb (upper) and β -Actin (D6A8) Rabbit mAb #8457 (lower).

Storage: Supplied in 10 mM sodium HEPES (pH 7.5), 150 mM NaCl, 100 μ g/ml BSA, 50% glycerol and less than 0.02% sodium azide. Store at -20°C. Do not aliquot the antibody.

*Species cross-reactivity is determined by western blot.

**Anti-rabbit secondary antibodies must be used to detect this antibody.

Recommended Antibody Dilutions:

Western blotting 1:1000

For product specific protocols and a complete listing of recommended companion products please see the product web page at www.cellsignal.com

Tween is a registered trademark of ICI Americas, Inc.

Thank you for your recent purchase. If you would like to provide a review visit www.cellsignal.com/comments.

IMPORTANT: For western blots, incubate membrane with diluted antibody in 5% w/v BSA, 1X TBS, 0.1% Tween[®]20 at 4°C with gentle shaking, overnight.

© 2015 Cell Signaling Technology, Inc.
Cell Signaling Technology is a trademark of Cell Signaling Technology, Inc.



Applications: W—Western IP—Immunoprecipitation IHC—Immunohistochemistry ChIP—Chromatin Immunoprecipitation IF—Immunofluorescence F—Flow cytometry E-P—ELISA-Peptide Species Cross-Reactivity: H—human M—mouse R—rat Hm—hamster Mk—monkey Mi—mink C—chicken Dm—D. melanogaster X—Xenopus Z—zebrafish B—bovine Dg—dog Pg—pig Sc—S. cerevisiae Ce—C. elegans Hr—Horse All—all species expected Species enclosed in parentheses are predicted to react based on 100% homology.