

Store at  
-20°C  
**#14404**

# Eg5 (E1L3W) Rabbit mAb

www.cellsignal.com

**Support:** 877-678-TECH (8324)  
www.cellsignal.com/support

**Orders:** 877-616-CELL (2355)  
orders@cellsignal.com

**Entrez-Gene ID** #3832  
**UniProt ID** #P52732

rev. 10/23/14

**For Research Use Only. Not For Use In Diagnostic Procedures.**

Applications W, IP, IF-IC Endogenous	Species Cross-Reactivity* H	Molecular Wt. 120 kDa	Isotype Rabbit IgG**
--	--------------------------------	--------------------------	-------------------------

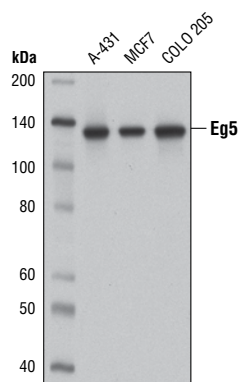
**Background:** Eg5 (also called kinesin-like protein 11 or Kif11) belongs to the kinesin-like family of motor proteins important in chromosome positioning, centrosome separation, and mitotic spindle formation. Phosphorylation of Eg5 by mitotic kinases regulates its activity by modulating its association with microtubules (1,2). Because anti-mitotic chemotherapeutic drugs, such as taxanes, target microtubules and have pleiotropic and sometimes toxic effects, drugs that target microtubule-associated proteins such as Eg5 are currently in development (3-5).

**Specificity/Sensitivity:** Eg5 Rabbit mAb recognizes endogenous levels of total Eg5 protein.

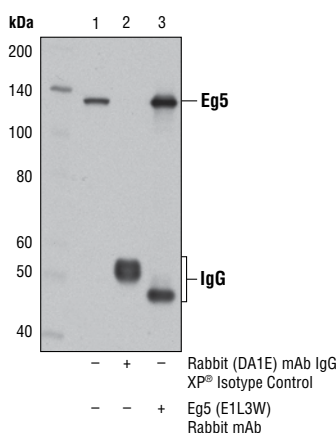
**Source/Purification:** Monoclonal antibody is produced by immunizing animals with a synthetic peptide corresponding to residues near the carboxy terminus of human Eg5 protein.

**Background References:**

- (1) Blangy, A. et al. (1995) *Cell* 83, 1159-69.
- (2) Rapley, J. et al. (2008) *J Cell Sci* 121, 3912-21.
- (3) Sarli, V. and Giannis, A. (2006) *ChemMedChem* 1, 293-8.
- (4) Cox, C.D. et al. (2008) *J Med Chem* 51, 4239-52.
- (5) Nakai, R. et al. (2009) *Cancer Res* 69, 3901-9.



Western blot analysis of extracts from A-431, MCF7, and COLO 205 cells using Eg5 (E1L3W) Rabbit mAb.



Immunoprecipitation of Eg5 from A-431 cell extracts using Rabbit (DA1E) mAb IgG XP® Isotype Control #3900 (lane 2) or Eg5 (E1L3W) Rabbit mAb (lane 3). Lane 1 is 10% input. Western blot was performed using Eg5 (E1L3W) Rabbit mAb.

**Storage:** Supplied in 10 mM sodium HEPES (pH 7.5), 150 mM NaCl, 100 µg/ml BSA, 50% glycerol and less than 0.02% sodium azide. Store at -20°C. Do not aliquot the antibody.

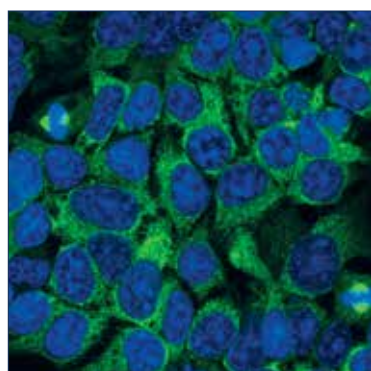
**\*Species cross-reactivity is determined by western blot.**

**\*\*Anti-rabbit secondary antibodies must be used to detect this antibody.**

**Recommended Antibody Dilutions:**

Western blotting	1:1000
Immunoprecipitation	1:100
Immunofluorescence (IF-IC)	1:100
IF Protocol:	Methanol Fixation required

**For product specific protocols and a complete listing of recommended companion products please see the product web page at www.cellsignal.com**



Confocal immunofluorescent analysis of 293T cells using Eg5 (E1L3W) Rabbit mAb (green). Blue pseudocolor= DRAQ5® #4084 (fluorescent DNA dye).

DRAQ5® is a registered trademark of Biostatus Limited.  
Tween® is a registered trademark of ICI Americas, Inc.

Thank you for your recent purchase. If you would like to provide a review visit [www.cellsignal.com/comments](http://www.cellsignal.com/comments).

**IMPORTANT: For western blots, incubate membrane with diluted antibody in 5% w/v nonfat dry milk, 1X TBS, 0.1% Tween®20 at 4°C with gentle shaking, overnight.**

© 2014 Cell Signaling Technology, Inc.  
XP® and Cell Signaling Technology® are trademarks of Cell Signaling Technology, Inc.



Applications: W—Western IP—Immunoprecipitation IHC—Immunohistochemistry ChIP—Chromatin Immunoprecipitation IF—Immunofluorescence F—Flow cytometry E-P—ELISA-Peptide Species Cross-Reactivity: H—human M—mouse R—rat Hm—hamster Mk—monkey Mi—mink C—chicken Dm—D. melanogaster X—Xenopus Z—zebrafish B—bovine Dg—dog Pg—pig Sc—S. cerevisiae Ce—C. elegans Hr—Horse All—all species expected Species enclosed in parentheses are predicted to react based on 100% homology.